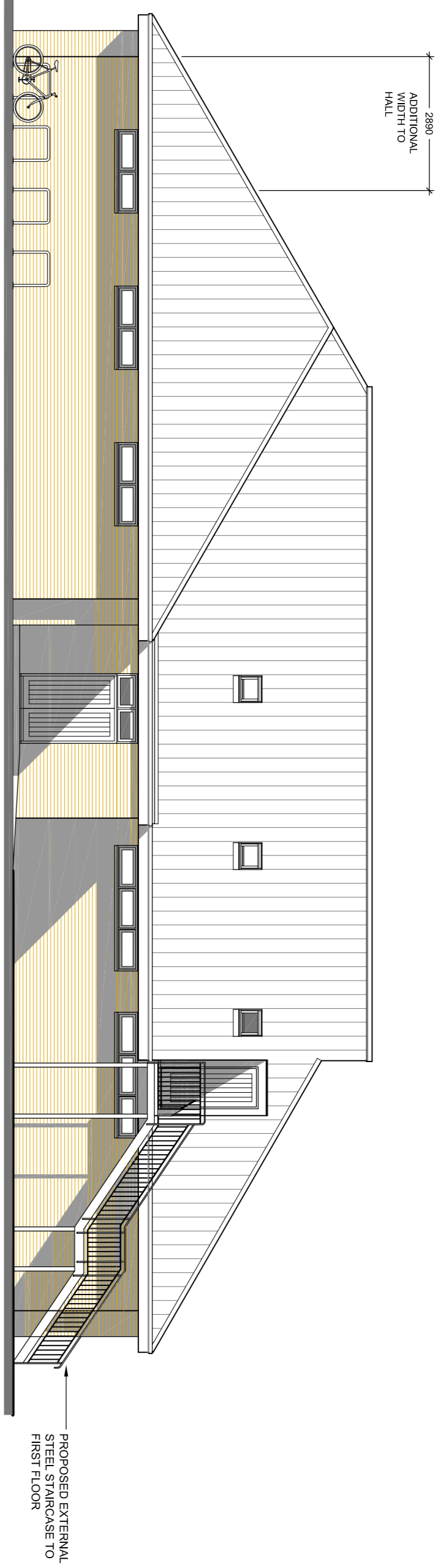
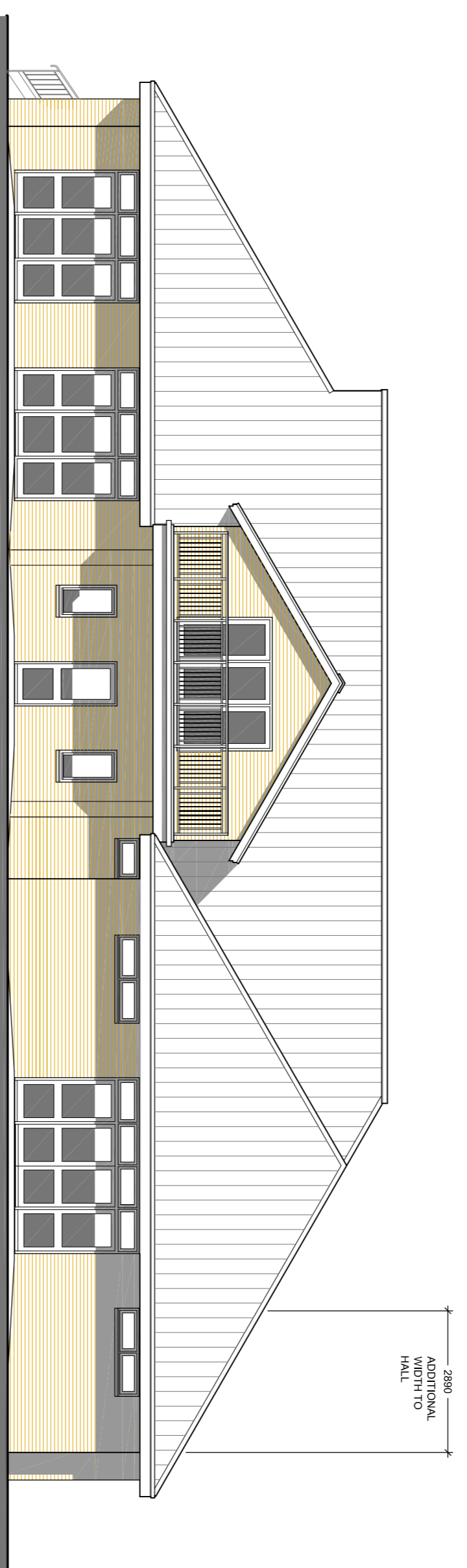


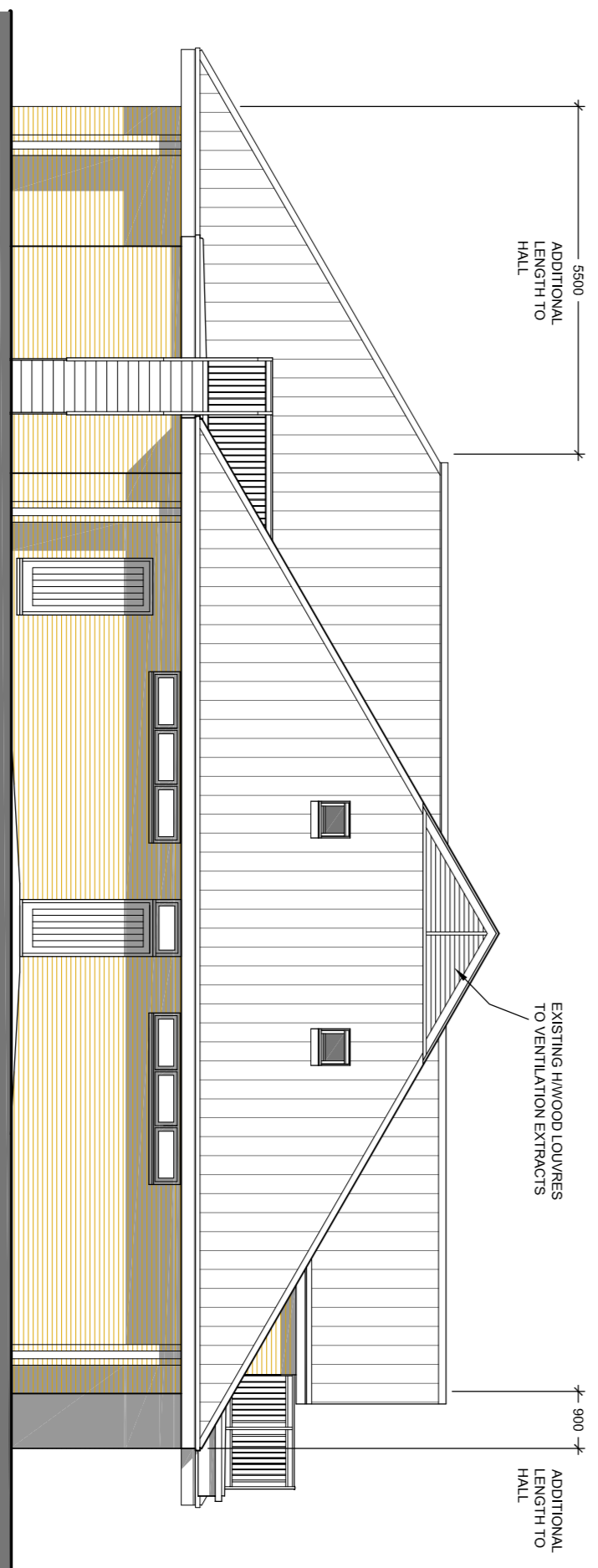
PROPOSED ARRANGEMENTS



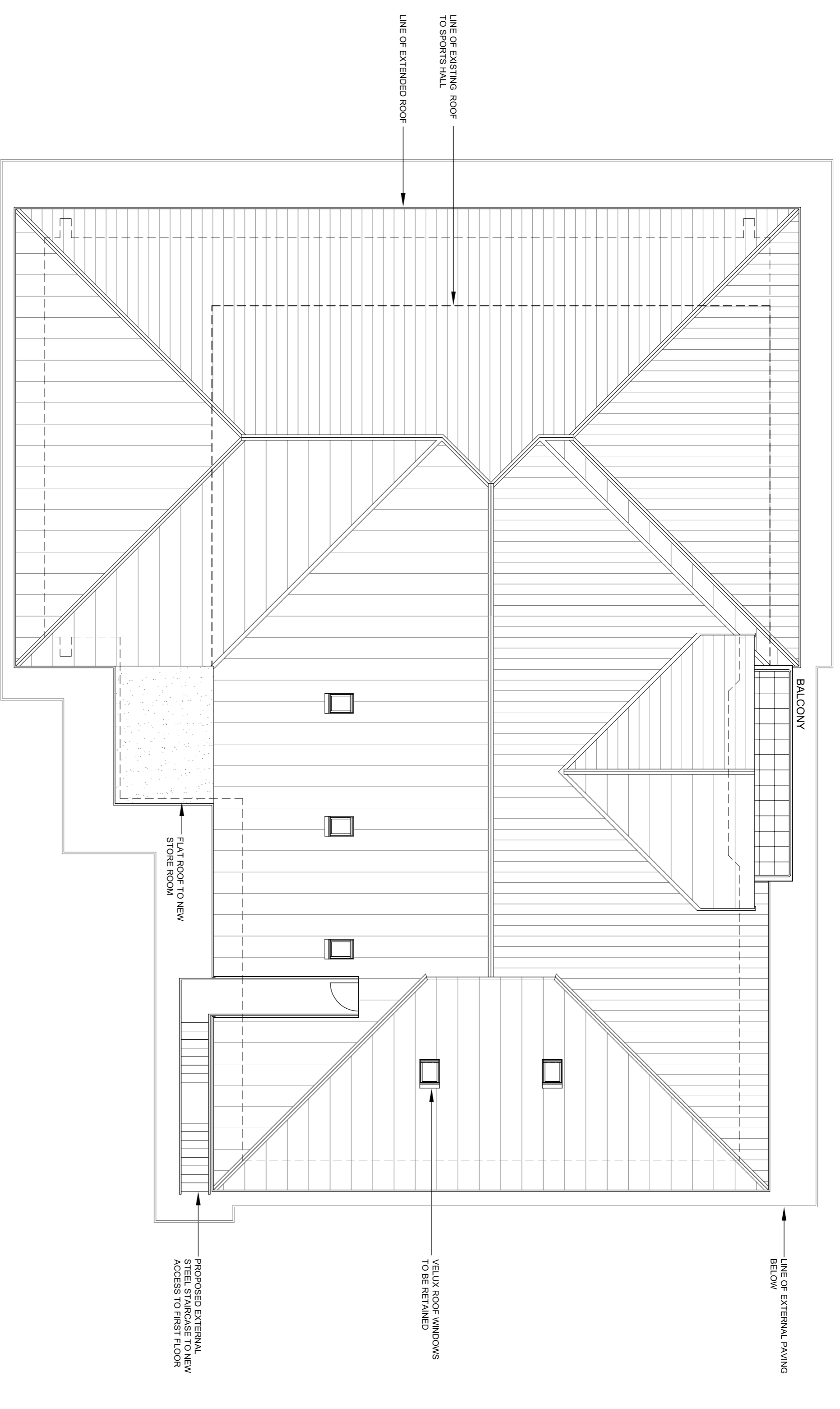
SOUTH ELEVATION TOWARDS ACCESS ROAD



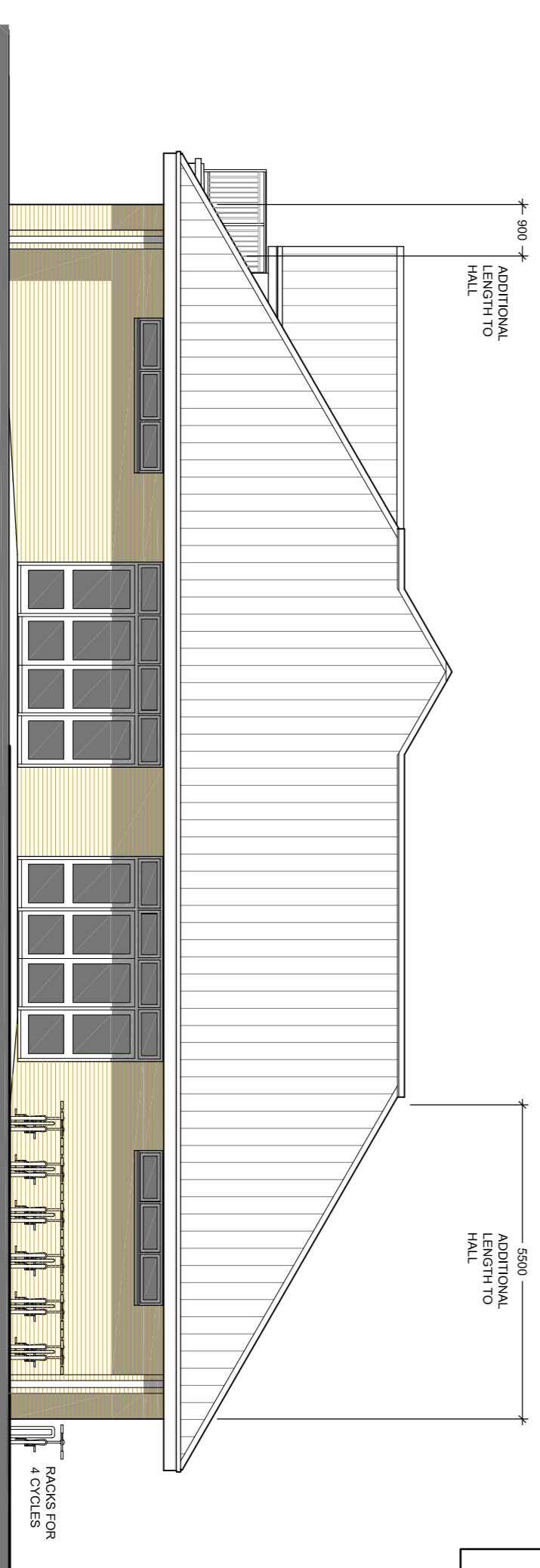
NORTH ELEVATION TOWARDS PLAYING FIELDS



EAST ELEVATION TOWARDS TENNIS COURTS



PROPOSED ROOF PLAN 1:100 @ A1



WEST ELEVATION TOWARDS CAR PARK 1:100 @ A1

- EXTERNAL MATERIALS TO MATCH
- BRICK FACED ROOF
 - ANTIQUE SLATE ROOF
 - ANTIQUE SLATE ROOF
 - FINISHED ALU/PAW GOODS

REVISIONS

CHS Architects
 CHS Architects (Cambridge) Ltd
 21 Coles Lane, Oakington, Cambridge CB24 3AF
 T: (01223) 564912 E: mj.boulter@ntlworld.com

Project: EXTENSION AND ALTERATIONS TO GIRTON PARISH COUNCIL PAVILION HALL
 66 CAMBRIDGE ROAD, GIRTON, CAMBRIDGE CB3 0FH
 For: Girton Parish Council

Drawing: PROPOSED ELEVATIONS
 Proposed ROOF PLAN

Date	Aug 2020	Scale	1:100 @ A1
Drawn by	MH	Drawing no	389-P04
Checked by		Revision	-