



GIRTON

Parish News



April 2021



*Revisiting Ray
Gordon's Legacy
See pages 18–19*



*Village turns out to say
goodbye to Bob Satchwell
See page 13*





Warm and welcoming local salon with full COVID safe policy in place.

Hair and beauty appointments available, please email us to book.

Call **01223 276600**

Email: info@plumtreehairandbeauty.co.uk

Price list: www.plumtreehairandbeauty.co.uk

6 Thornton Way, Girton, Cambridge, CB3 0NJ

www.OffBeatGlass.co.uk

Artisan glass homeware and gifts. Free, fast delivery in Girton



window hangers



deep bowls

Made in Girton by Ciara Twomey

07522 775428

JASON KIRBY

Professional Painting & Decorating Ltd

Tel: 01954 211775

www.jasonkirbyltd.co.uk



A COMPLETE PLASTERING SERVICE

- Old ceilings and walls reskimmed and repaired
- Artexing / coving
- External rendering / stone dashing
- References available from customers in the village
- All work guaranteed
- For free estimates & advice contact:

Louie Holliday

10 High Street Girton Cambridge CB3 0PU

Tel: 01223 277710

Mobile: 07980475856

DIRK RUSSELL

repairs and maintenance for
your home and garden
dirkrussell@hotmail.co.uk

07803 255 405

handyman services
fencing & garden clearing

**DIRK'S HOME AND GARDEN
SERVICES**

The Girton Chiropodist

(Mobile Service)

ERICA NICHOLS

M.S.S.Ch. M.B.Ch.A HCPC Ch20454

Glebe House
39 Cambridge Road,
Girton CB3 0PN

Tel: 01223 520077
Mob: 07703 292354
e-mail: erica.n@me.com



Nelson

Doctors, Dentists,
Surgery

of Girton

Official Girton Community
Hospital Trips

The local Taxi Service



Tel: **01223 276654**

Local trips, Airports and any Long distance door to door service

Using modern 100% fully Electric vehicles

A. P. GROUNDWORKS

Block Paving • Patios

Driveways • Slab Laying

Groundworks • Drainage

20+ years experience • Free Quotations

CPCS • CSCS • CITB qualified

Telephone Andy:

07944 813367 / 01223 233754

email: apascoe44.ap@googlemail.com

Publication Information

Editor: Rob Neal, 101 High Street, CB3 0QQ
tel. 07875 374966
email: editorgirtonparishnews@gmail.com

Secretary: Sheila Bowler, tel. 276914

Advertising Manager and Treasurer:
Marion Fisher, 117 High Street, CB3 0QQ
tel. 570866
email: gpnads@girton-cambs.org.uk

Copy should be submitted to the Editor in electronic form, with any photos, graphics or logos submitted as separate attachments, not embedded in the file. Questions about submission should be addressed to the Editor.

The editorial team reserves the right to edit, accept or reject any material submitted for publication. The views expressed within the magazine are those of the contributors and do not necessarily reflect those of the editorial team.

A copy of the magazine is available on the Girton website at www.girton-cambs.org.uk, where you may also find expanded versions of selected items.

Advertisements

Prices for placing advertisements in the *Girton Parish News*, in black-and-white or colour, can be had on application to the Advertising Manager.

The advertising policy of the *Girton Parish News* aims to promote enterprises and activities from within Girton. The space available for advertisements is limited, and preference is given to businesses founded, situated, controlled and operated within Girton. The *Girton Parish News* reserves the right to decline to publish any advertisement which the Advertising Manager considers not to meet the objectives of this policy. Inclusion of an advertisement does not imply endorsement by the *Girton Parish News* of the product or service advertised.

The *Girton Parish News* is produced and distributed entirely by volunteers from the village, including the following:

Typesetters: Sam Clift, Andrew Hawkes,
Claire Lightley, Bill Rothwell

Distribution Manager: Rosemary Jones, tel. 276491

Editors and Proofreaders: Chris Bowler,
Wendy de Horsey, Mike Fay, Marion Fisher,
John Gibson, Alison Giles, Carol Huxley,
Jenny Knights, Patsy Smith, Matthew Vernon,
Ewan Wilson

Puzzle Corner: Sian Franklin

Webmaster: Andrew Haylett

and many others. If you are interested in becoming involved in any capacity, please contact the Editor.

*Printed by Victoire Press Ltd, 9–10 Viking Way,
Bar Hill, Cambridge CB23 8EL, Tel: 01954 781919*

The Village Diary

Due to the Covid-19 pandemic, diary activities for April have been cancelled. *Girton Parish News* may be downloaded from www.girton-cambs.org.uk/girton-parish-news.

DON'T BE ALONE

If you need or can offer help or telephone social contact, please let us know by using the contact details on the Girton website:

www.girton-cambs.org.uk

If you do not have access to the internet please contact:

01223 526013,

clerk@girton-cambs.org.uk

or 01223 277448,

helpinggirton@gmail.com

and a local contact will be put in touch to provide assistance.

Contents

| | |
|--------------|-----------------------------------------|
| Pages 5–8 | Parish Council and Councillors' Reports |
| Page 9 | Girton Cottontails Preschool |
| Page 11 | Girton Green Fingers |
| Page 13 | The late and the great Bob Satchwell |
| Page 15 | Puzzle Corner |
| Pages 16–17 | Scoreboard |
| Pages 18–19 | Thank you Ray Gordon |
| Page 21 | News from Girton Glebe |
| Page 21 | Friends of Girton Glebe |
| Pages 22–23 | Girton Town Charity |
| Page 24 | News for Older Residents/Age UK |
| Page 25 | Club 55 |
| Pages 27, 29 | Our Churches |
| Page 30 | Rubbish Collection and Mobile Library |

Copy date for May issue: Wed. 14 April. Issue date: Sat. 1 May. Covers 1 May – 5 June 2021.



PS Dean Roofing

Traditional Roofing Contractors

Slates, Tiles, Guttering, Chimneys and Re-pointing

Re-roofing, Repairs, Lead-work, Free Quotations

01223 572504 07752 711175

paul@psdeanroofing.co.uk www.psdeanroofing.co.uk

22 Longstanton Road, Oakington, Cambs, CB24 3BB

W J Guttering & Drainage



2 Woodhouse Way
Cambridge

NO CALL OUT CHARGE - FREE QUOTATIONS

**Gutter Cleaning, Repairs,
Replacement, Fascia & Soffits,
Soakaways & Blocked Drains**

01223 510623

Mobile: 07720 146815



Specialists in Wood Flooring,
Carpets & Vinyl Flooring Solutions

QUALITY FLOORING SUPPLY, INSTALLATION & AFTERCARE

"What a fantastic company. Knowledgeable and friendly staff and quality services. My company has used Art of Flooring on a number of occasions already and have been delighted with the whole experience. Thoroughly recommended and future projects will be coming your way." Mr Andy Ward, Cambridge

141 Milton Road Cambridge CB4 1XE
01223 755 802 www.ArtofFlooring.co.uk

MOBILITY EQUIPMENT

**SCOOTERS, WHEELCHAIRS, RISER/RECLINER
CHAIRS, BEDS, WALKERS, FOOTWEAR,
TOILET & BATHING AIDS, KITCHEN &
HOUSEHOLD AIDS, CONTINENCE CARE,
CUSHIONS, STAIRLIFTS AND MUCH MORE**

HOME VISITS AVAILABLE

EQUIPMENT HIRE, SERVICING AND REPAIR

**FRIENDLY AND CONSIDERATE SERVICE
GUARANTEED**

Scotsdales Garden Centre
Horningssea, Cambridge
CB25 9JG

Tel: 01223 863908

www.orchard-mobility.com

Open: Monday to Saturday
9 am - 5 pm



Orchard
mobility centre



APPLETREES
PLUMBING & HEATING

All types of domestic plumbing, heating and
gas work undertaken.

City and Guilds Qualified and Gas Safe
Registered.

Phone Number- 01353 741236

Email - info@appletrees.plumbing

City & Guilds
Qualified



Girton Parish Council

The March meeting saw the Council expressing their appreciation of the service of current and former members. The Council thanked Councillor Douglas de Lacey, on his imminent retirement from South Cambridgeshire District Council, for all that he has done for Girton through many years of service. The Council also noted that former Parish Councillor Ray Gordon has recently moved away from the village, and expressed gratitude for the enormous amount of work which Ray undertook while a Councillor (see pages 18 and 19 for further tributes to the work of Ray in the village). The Council also thanked Councillor Roger Hickford, who has stepped down from the Parish Council for personal reasons, especially for his work on the Pavilion refurbishment project.

Items for discussion at the March meeting included dates for the Annual Parish Meeting and Annual General Meeting of the Parish Council. The conflicts between the requirement for face to face meetings after 7 May and continuing Covid-19 restrictions on numbers allowed to do so, means both will be held online on Tuesday 27 April and Tuesday 4 May respectively. The Council also agreed to purchase a second-hand shipping container to be placed on the car park for temporary storage during the Pavilion refurbishment works, and received reports on adoption of on-line banking and illegal encampments training.

Many residents will be aware that a number of potential housing sites in the village were submitted by land owners as part of the 'call for sites' as the next Local Plan starts to be formulated. In response to an informal survey by Greater Cambridge Planning on the viability of these sites, the Council has submitted observations on issues and concerns that have been brought to its attention. Any sites that progress to the next stage will be subject to a rigorous public consultation process later in the year.

Next meetings

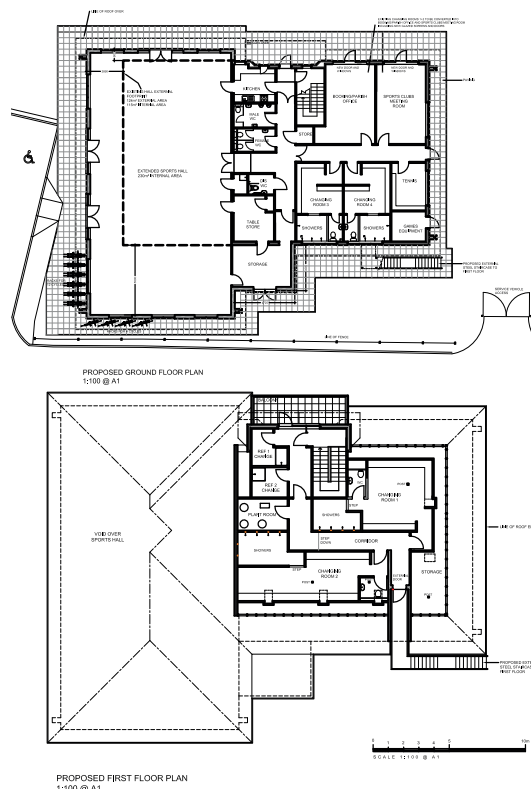
Council meetings are currently being held via video-conference until 7 May. Unless further legislation allows, meetings will revert to 'face-to-face' after that date. Residents are encouraged to contact Councillors directly if there are concerns they wish to raise (please see the listing of Councillors on page 30). Any member of the public who wishes to attend any meeting may do so by prior arrangement with the Clerk. The next meetings will be on Tuesday 20 April and Tuesday 4 May (AGM). The Annual Parish Meeting will be on Tuesday 27 April and will be streamed on-line for public participation.

Girton Parish Clerk
01223 526013
clerk@girton-cambs.org.uk

A full list of Councillors can be seen on page 30.

Pavilion redesign and extension

Readers should be aware that the Parish Council has developed plans for a reorganisation of facilities in the Pavilion, and an extended Hall. This was driven by the need to provide a legally compliant accessible Parish Office and the long-held ambition to provide a more versatile Sports Hall which would allow wider use as a Community centre. A substantial County Council grant and Planning permission have been obtained. As we move towards completing the fine detail of the design, we are keen to ensure that, in the absence of a Public Meeting, the village is fully informed on what is planned. While current users have been consulted on their priorities for improvements, we would welcome comments and suggestions from the wider village community for possible inclusion in the final construction brief.



Space does not allow us to produce the plans in detail here, so readers are urged to view them, along with the Draft Construction Brief, on the village website, and send any comments to the usual Parish Office contact addresses.

Help us make the best of your facility.

Dust Free Wood Floor Sanding & Restoration

Is your Wooden Floor in need of Sanding?

"In one day our scratched and stained parquet floor was restored to its beauty of once long ago."

Many thanks." Mrs Baker, Impington



The Ultimate
FLOOR SANDING
Company

AFFILIATED SERVICE PROVIDER
Art of Clean's Division

Call today on

01223 863 632

Please quote Girton 1

From Our Councillors

County Councillor Lynda Harford

Education

Despite the challenges of the pandemic, the education service and particularly the teaching and support staff in schools, have continued to work hard and effectively in supporting and safeguarding vulnerable children and young people. Those challenges will continue beyond the long hoped for easing of lockdown restrictions but I am pleased to be able to report continued positive progress. As we all know, from 8 March, all pupils returned to face-to-face teaching in schools and colleges. Since a peak in January, levels of coronavirus infection have declined both nationally and locally thus allowing for this to happen. The County Council's education team will continue to monitor infection rates in schools and the wider community on a daily basis so that immediate action can be taken to manage outbreaks and stop the spread of the virus.

The government has recently announced an extension of the Winter Grant Scheme to provide additional support to families. Cambridgeshire will receive £507,000 and this will be supplemented by the Council to provide food vouchers to children during the Easter holidays. The extension of the scheme will also allow a continuation of the help being offered to families with utility bills and some household items.

Highways

The Highways & Transport committee considered a report on "The Divestment of Skanska Infrastructure Services and Novation of the Highway Services Contract" "to provide members with an overview of the forthcoming novation of the county Council's Highway Services contract from Skanska UK Limited to Milestone Infrastructure Limited (part of M Group Services)". I see this as a great opportunity to review standards of work and performance monitoring and will be pursuing this energetically. Debate on the update report on the A14 Cambridge to Huntingdon scheme resulted in a request to officers to invite Highways England to attend a future meeting of the committee so that Councillors could make their points directly to that organisation. I very much look forward to that opportunity.

Transport

The government recently announced allocation of £3bn for 'a greener bus revolution' aimed at improving bus services. The Mayor has subsequently announced that he has secured £100,000 for the Cambridgeshire and Peterborough Combined Authority (CPCA) area to begin work on delivering a reformed, franchised bus service. Since he took office in 2017, the Mayor has devolved responsibility (and budget) for transport to the county Council. That responsibility includes provision of public transport, including contracted local bus services, community transport and concessionary travel. From 1 April 2021 devolution of responsibility will end and be taken on directly by the CPCA. I understand that current arrangements will remain unchanged. In the past few years County Councillors have been fiercely protective of the

services that are vital to our rural communities. Local bus services have also received support from the Mayor during the pandemic. More details can be found here: <https://cambridgeshirepeterborough-ca.gov.uk/what-we-deliver/transport/buses/bus-support/>.

At the end of this month Douglas de Lacey will stand down after his many years of loyal service to Girton as a District Councillor. I want to thank him for the very good working relationship that we have shared that has seen us collaborate on many issues. I am pleased that he will be staying on as a Parish Councillor and that his wealth of experience and knowledge about local matters won't therefore be entirely lost to us.

Thank you to everyone who has been in touch recently. Take care. Stay safe.

Lynda

lyndaharford@icloud.com

01954 251775/07889 131022

Follow me on Twitter: @2whit2whoo or

Facebook: <https://www.facebook.com/lynda.harford>

A Farewell from the District



By the time you read this, I shall no longer be your District Councillor. This was not an easy decision but was forced on me by family circumstances; and in order for my seat to be contested in May I had to resign by 26 March. I've tried to serve you for 13 years, it's now time for someone else to take up the reins. Could that be you? It will only be for one year in the first instance as there is an all-out election in 2022. Talk to me about it!

I must say they have been 13 happy years. Of course I have not mentioned casework in my reports, but it has been a privilege to help residents in many and varied situations. My only criticism would be that, for some, your Councillors were seen as a last resort; we should be the first you should turn to when things go wrong.

February was all about finances as we prepared the annual budget. It is clear that in a very difficult year the administration has managed to be a good steward of our finances, in no small part because of earlier decisions to invest heavily in property as central Government cuts our grants. So although we are putting some 10p a week on our precept we should manage to survive the coming year without major cuts.

Council on 23 February was largely about finance, but there were also three motions from members. The first focused on the problems caused to rural villages and communities by HGVs, in the light of Government proposals to increase the maximum permitted axle weight. The second was to support the designation of the proposed Fens Biosphere as a UNESCO Biosphere; and the third asked our pension fund holders to assess the risk which climate change poses to their investments. All were approved.

On 25 February the major item on the scrutiny committee's agenda was a report on our ICT data centre following a report on outages in the previous quarter. This led to a lively discussion on the robustness of our ICT with respect to a number of potential threats, including external attacks. We gave our ICT team a lot to think about. We then discussed a report on how we should handle our housing repairs service; whether to take it back in-house, continue to contract it out or to have a hybrid service so that minor repairs could be better managed. Since this is a long-term issue the current contract has been extended for one year to allow a fully-informed decision.

In March the Council allowed me, with other District and Parish Councillors, to attend training and a webinar on Gypsy, Roma and Traveller issues. Although I am stepping down this is something which has concerned me all my time in the Council and which I intend to continue to work on with the Council, together with other Local Plan issues. I shall have attended my last Cabinet Meeting on 22 March and chaired my last Civic Affairs on 25 March; but this is not the last the Council will hear from me.

Douglas de Lacey

District Councillor Tom Bygott

Demolition of Hotel Felix on Huntingdon Road

On 26 February, the property developers submitted their application to demolish Hotel Felix. The application is currently being checked for validity before it can appear on the South Cambridgeshire District Council website at www.scambs.gov.uk/planning/view-or-comment-on-a-planning-application. The planning department has a backlog of about one month when validating applications, so the reference number won't be available to meet the deadline of this month's GPN. There will then be a public consultation period during which anyone, anywhere can submit an objection. We don't yet know the closing date for the consultation, but it could occur before next month's GPN is published.

The building now has its own Facebook group www.facebook.com/groups/savehotelfelix, and I will publish the reference number and link to the consultation there. Otherwise, you can search on the Council's website above. It should appear above the 2018 application to expand the hotel and may include the hotel's postcode CB3 0LX. It is also possible to write to the planning department at:

Greater Cambridge Shared Planning
South Cambridgeshire District Council
South Cambridgeshire Hall
Cambourne Business Park, Cambourne
Cambridge CB23 6EA

Thank you to everyone who has written to me to express their support for the building and to join the campaign group to save it. If we are to save this building, we need to have a very large and public campaign that stretches far beyond Girton or even Cambridge, so please try to convince as many people as you can to get involved.

I have requested a Tree Preservation Order (TPO) for a giant sequoia (*wellingtonia*) that stands right on the edge of where the new building is planned. It can be seen clearly from Whitehouse Lane. The tree is about twice as high as the hotel, so it could be quite old, but I will defer to the Council's tree officer to make a professional estimate. The giant sequoia is one the most remarkable species of tree in the world; some examples in its native California have lived for more than 3,500 years. It would be a tragedy if this magnificent tree were to be cut down.

District Council's budget agreed

At February's South Cambridgeshire District Council meeting, the Council's budget was agreed. There will be a £5 per year increase for the average band D home to £155.31. Adding the County Council, police and fire components brings this to £1,876.20, plus an extra £69.39 for Girton Parish. The cheapest Council Tax is for band A properties, which are always 2/3 of band D, and the most expensive are band H, which are always double band D.

We are very fortunate to have this system of Council Tax. In many countries, such as the United States, Councils charge "rates". If the value of your property increases by 35%, the rates also increase by 35%. Our MP, Anthony Browne, recently wrote an article in the *Spectator* warning of the dangers of that kind of tax.

Divestment from fossil fuels

Also at the last Council meeting, a motion was passed asking for the Council to write to the Local Pension Board and pension investment committees asking how they "intend to manage the effects of climate change as a financial risk to their investments, including the issue of divestment" from fossil fuels. My group fully supported this motion, not only because of our concern for the environment and our desire for cleaner air, but also because of the financial risks that these investments pose for the Council's staff and retirees.

In 2015, UK local authority pension funds lost nearly £700 million when the value of shares in coal-related companies collapsed. The Greater Manchester Pension Fund alone lost £148 million and Teeside nearly £47 million. This month the UK's largest and most recently built coal-fired power station, Drax, ceased coal-burning activities for the last time, leaving only three power stations burning coal. These are known as "stranded assets" and occur also in the oil industry. Last summer, BP wrote down £14 billion from the value of its oil and gas assets.

Many people aren't aware that they have significant exposure in their pension savings or in a shares-based ISA to fossil fuels. In the 1960s, research was published that most active fund managers were no better at picking

...continued on page 8

...continued from page 7

From Our Councillors

District Councillor Tom Bygott

stocks than choosing at random. This led in the 1970s to the introduction of tracker funds, where money is invested in every company making up a stock market index. Many people in the UK have pension funds invested in FTSE100 tracker funds, but may not be aware just how much of this is invested in oil companies. At the time of writing, BP and Shell together make up nearly 10% of the weight of the index; someone with £100,000 in their pension invested in a FTSE100 tracker fund owns £9,365 of shares in BP and Shell. They also own £3,139 worth of British American Tobacco shares.

Knowing what we know today about the future of these dying industries, people probably wouldn't make the same investment decisions if this were more visible.

Cllr Tom Bygott
cllr@bygott.net
07765 475 513

Let's all help to prevent Girton becoming a "rubbish" village

We noted in February's *GPN* that, until we can organise a litter-picking team, as individuals you are welcome to borrow council "grabbers" to take with you on your daily walks. So far five have been claimed, and judging by the response I have had they are being put to good use. One family notes that it is used on their regular walks and "each time (we) came away with one or two full bags of litter". This is very encouraging and I want to thank everyone who picks up other people's litter and helps to keep our village tidy. If you would like one I still have some grabbers for loan; also some children's kits with a shorter grabber, a pair of gloves and a hi-viz jacket.

But why is this necessary? Why is the litter there? How can one family find enough rubbish to fill two bags every time they do the same short route? Some may be dropped by people just passing through, but most of it is clearly dropped by our own residents. And this is very discouraging. Surely it is not too much to ask that you take your rubbish home with you, and then recycle what you can?

Please be considerate: even if you don't carry a grabber you can do your bit in keeping our village tidy by making sure you never drop litter. Let's all prevent Girton becoming a "rubbish" village!

Douglas de Lacey

Anniversary of the opening of Girton Glebe pool



In October 1958 the then Headmaster of Girton Glebe School, Brian Foot, explained to a meeting of parents that the County Council was not prepared to fund the construction of a teaching swimming pool which he felt was important to enable children to be taught to swim. A group of these parents then decided that they would build one themselves!

Fundraising began and by February of 1959, enough money had been raised to make a start. A plan was agreed, relying on a number of volunteers. Work began shortly thereafter and a great deal was achieved before work had to stop for the winter. By June 1960, the pool was in use, but it was not until June 1961 that necessary 'fine-tuning' was completed, and the pool was officially opened. It remains in use to this day. Who knows how many children have learned to swim in it?

It will soon be 60 years since that official opening. The children of those volunteers have come together to erect a plaque to list all who were involved in what remains, to this day, "... a triumph of teamwork and cooperation", to quote Brian Foot. It is planned, Covid permitting, to have a small ceremony at the School on 3rd July 2021. Needless to say, after all this time, contact has been lost with a number of families and we would love to invite any 'children' of the following to get in touch if they are interested in taking part. Please contact Stephen Allen at srlallen@virginmedia.com.

| | | |
|----------------|-------------------|----------------|
| N.B. Ayling | R.J. Ayres | H.J. Ballinger |
| D Bates | R.T. Boys | D Brown |
| L.E.J. Brown | H. Burrows | C. Clarke |
| H Cooke | F. Cripps | J. Curtis |
| J.H. De Leiros | T. Flynn | B V Foot |
| P.W. Garrad | A.J.G. Hall | L Impey |
| J.C. Isaac | P. Johnson | J Kershaw |
| P. Lloyd | J.F. Loader | P.J. Mancner |
| R. Milner | R. Naylor | T. Peel |
| C.N. Perry | H.G. Phizackerley | A W Pilath |
| T. Saunders | R.J. Stearman | W. Stringer |
| H.W. Tuckey | J. Vine | A.H. Watson |
| M.J. Willmott | | |



Girton Cottontails Preschool

At the time of writing, we are almost at the end of the spring term. Our first two terms of opening since September have flown by and we continue to be

grateful to our wonderful families and the local community for all of their support. We have plans to look forward to for our last week to celebrate Easter with the children, including hot cross buns on the campfire at Forest School and of course an Easter egg hunt!

For World Book day, the children and staff dressed up as book characters and we had a lovely day of sharing favourite stories together and acting out *The Very Hungry Caterpillar*.

The children have been doing some gardening this term and have all planted a tomato plant seed each. We have been learning what we need to do to look after our seeds and the children have been delighted to see some tiny seedlings beginning to emerge. Check out our social media pages for tomato plant updates! We hope that everyone will be able to take their tomato plant home before the summer to continue to look after it and hopefully have some homegrown tomatoes.

Our rising fives have continued to learn about being healthy, with a recent lesson about hygiene: how germs can easily be spread and the correct way to wash hands. An important lesson at any time, but obviously of particular importance presently. The children have really taken what they have learnt on board and we have witnessed excellent hand washing habits since the lesson.

At Forest School, we have been creating woodland homes for the animals. The children used many natural resources that are available to them to make the homes, they were keen to consider the comfort of the animals adding leaves for beds and pine cones for 'dinner.'



We are a community interest company, so non-profit making and we greatly appreciate any support you can give. Please take a look at our *gofundme* page and our Amazon wish list:

- www.gofundme.com/f/emma-amp-laura-are-reopening-cottontails-preschool

- www.amazon.co.uk/hz/wishlist/ls/JJP8OJALIV2I?ref_=wl_share

For further information about the preschool, please visit our website or get in touch using the contact details below.

Laura Norman and Emma Pell

Girton Cottontails Preschool Managing Directors

Email: girtoncottontailspreschool@gmail.com

Phone: 07368 180771

Web: www.girtoncottontailspreschool.com

Find us on Facebook, Instagram and Twitter

Woodlands Park WhatsApp group proves huge success



A global pandemic may seem an inhospitable environment for any good news to flourish, but one little corner of Girton has certainly bucked the trend since the pandemic hit in March 2020.

While it may have seemed a small thing to start with, one resident of Woodlands Park had the idea to create a *WhatsApp* group for local residents at the start of the first lockdown. Posting notes through front doors with joining instructions, the group set up initially to help coordinate supplies and ensure anyone who needed help in the street could get it.

That is certainly what it worked well for in the beginning, but it has now evolved beyond recognition into much more over the last twelve months. It has been used to welcome new people to the street, to wish those leaving well for the future, for young families to meet and arrange play dates on the Recreation Ground (when restrictions allowed!), to ask for help in finding a missing pet, for recommendations for local tradesmen, to discuss the sonic boom which shook us all a few months ago, or to talk about local road closures, gas works or village news, or to ask if anyone has spare room in their green or blue bin, to offer various household items or indeed just to share an uplifting photograph of a beautiful sunset on the street to raise spirits as better times approach for us all. It's evolved into a fantastic resource for everyone.

It's introduced people, once strangers, to one another. In a year where people have been kept apart across the globe, this *WhatsApp* group has undoubtedly brought people in our street even closer together, created connections and forged a fantastic sense of local community.

ANDREW EVANS

01954 780 999 – 01223 864335

email: andrew@omegaclean.co.uk www.omegaclean.co.uk
Family Business Since 1980

- ✓ Carpet Cleaning
- ✓ Upholstery Cleaning
- ✓ Tile & Grout Cleaning
- ✓ Leather Cleaning
- ✓ Oriental Rug Cleaning
- ✓ Carpet & Fabric Protection
- ✓ Allergy Relief Treatment
- ✓ Odour Eradication
- ✓ Stain Removal
- ✓ Carpet Fitting



LM Groundworks & Landscaping

- ❖ Patios
- ❖ Paving
- ❖ Footings
- ❖ Drainage
- ❖ Fencing
- ❖ & more

Tel: 01638 743627 / Mob: 07934 642716

M&M

Heating & Building Services

- Full Gas and Oil Boiler Installation
- Full Heating Systems
- Boiler Servicing and Landlord Certificates
- Power Flushing
- Full Bathroom Design and Installation
- All Plumbing Works Large and Small
- Extensions, Alterations and Repairs
- Refurbishment and Renovations
- Kitchen Design and Installation
- All Carpentry Works
- All Building Works Undertaken
- Painting and Decorating

01223 691599

Mob: 07766 281962/07832 261791

info@mandmheating.co.uk • www.mandmheating.co.uk

10 SOUTH ROAD, HINGING ON, CAMBS, CB4 9HB



YOUR PERSONAL WEALTH. OUR PERSONAL RESPONSIBILITY.

At Tilney we have been helping clients achieve their financial goals for more than 80 years. Whether you are saving for retirement, want to pass on your wealth or would like to have your investments managed by an expert, we can do this same for you.

To find out how we can help you, please call our Cambridge office on 01223 652 860 or email nell.trickett@tilney.co.uk for Investment Management or laura.ingram@tilney.co.uk for Financial Planning.

Investments carry risk
investors can lose money investing.
tilney.co.uk



TILNEY

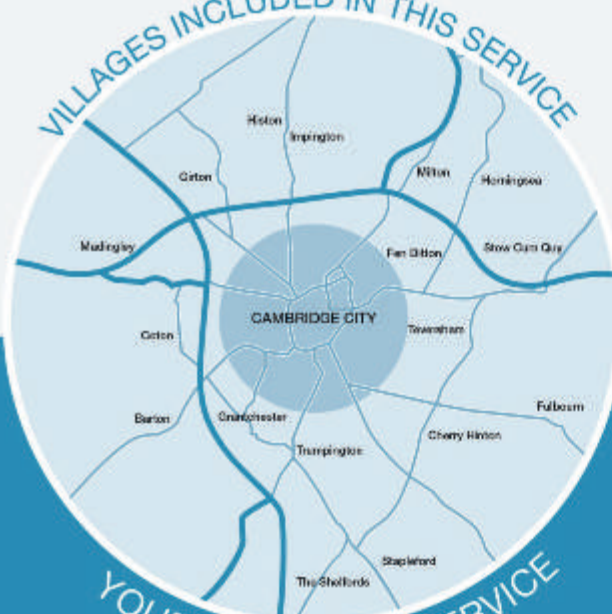
PLANNING | ADVISING | INVESTING



Get out and about and save money with PANTHER TAXIS

Did you know that we now offer a **REDUCED RATE** village to village service to or from **YOUR VILLAGE?**

VILLAGES INCLUDED IN THIS SERVICE



YOUR LOCAL TAXI SERVICE

**Only pay
door to door
not a penny
more**

Find out how much
you can **SAVE** by
downloading our app



With a fleet of over 650 vehicles running
24/7, you know who to call:

01223 715715

www.panther taxis.co.uk

Prices are fixed based on the Cambridge metered rates to or from the included villages.

Villages outside of this area may still have a callout fee.



Well, thank goodness that's over. The lockdown winter, I mean. How much harder it was than the good spring and summer of 2020! Too cold or too wet to garden, and too muddy for a lot of walks (what is it about the Cambridgeshire clay? – it clings to your boots even more than London clay). We re-discovered local walks, and did a little desultory tidying up in the garden when it was not too cold. But it's spring now! Even as I write at the start of March, our cherry trees are showing signs of blossom (much to the delectation of the local bird population) and should be in their full finery by the time this article appears.



A comma butterfly on the white cherry blossom

I have been thinking lately about what it is to take over someone else's garden when you move house. Years ago, there was a BBC TV programme called *Old Garden, New Gardener*, and I still have the accompanying book. Our daughter has recently moved to a house in East London with a very small but south facing garden. We ourselves moved to Girton in 2015 and took on a very large north facing garden. What we have in common is inheriting a garden unloved for a generation. I still remember the sense of panic I experienced when I walked round and looked at what I'd got to do (and this didn't include what needed to be done to the house!). The book has a long chapter entitled "Hacking back the wilderness", which I had to do. Another is "Features, eyesores and boundaries", which is what she'll have to tackle (e.g. a grim concrete wall). I'll pass the book on to her, I think.

Our immediate project is dealing with the set of sheds, decking and ramshackle corrugated plastic sheeting, which seem to have been in the garden as long as anyone can remember (which puts it at about 40 years, at least). They have had their day, and the latest round of

rodent incursion has convinced us that we'll HAVE to replace them. We ventured round the back (nearly breaking our ankles on some rotting planks) and discovered another strip of wilderness. It's probably beloved by wildlife, some welcome and some not!

For those of you who are lucky enough to have gardens well established and to your satisfaction, there are still lots of things to be getting on with. Early bulbs will be going over by now, so deadhead them to stop them expending energy on setting seeds, but don't remove or tie up the leaves: they need them to store food for next year's flowers. The twin plagues of 'weeds' and 'slugs and snails' will be gearing up to annoy us. A half hour now spent weeding, to stop weeds sending seeds left right and centre, will save a lot of time later. Although the perennial weeds (horsetail, in our garden) will still have you beaten. New shoots of a lot of herbaceous plants will be emerging, and will need protecting from slugs and snails, particularly hostas, lupins and delphiniums. There's still time to dig up and divide oversized or tired clumps of some perennials, and plant smaller bits elsewhere if you want to fill gaps. I've been attacking rudbeckia – I rather wish someone had warned me it had thuggish tendencies, although it isn't usually on a list of plants to be wary of. Six small ones planted just two years ago were already crowding out more refined plants last summer! And keep an eye on aphid infestations, but preferably not by spraying with insecticide as this will also kill beneficial insects. I usually rub them off with my fingers, although I accept that may not be for the squeamish.

On the subject of garden chemicals, metaldehyde slug pellets (those blue ones) are finally to be banned this year, after an original deadline was deferred. The sale of them is to be banned from 31 March 2021 and all supplies must be used up by 31 March 2022. It's lethal to a lot of garden friends, such as frogs, toads and hedgehogs, so even though it's still legal to use it, I'd recommend using other deterrents. I have recently, for the first time, bought some nematodes from the Green Gardener.

Nearby gardens to visit have been a great consolation throughout the early spring. By the time this is published, the daffodils might still be in full bloom at Madingley Hall. (They were mostly in bud in mid-March.) And the café is open for takeaways, as is also the case at the Botanic Garden. Both easy to get to, and highly recommended!

Finally, in early May there will be a Garden Society plant sale along the lines of last year, due to the restrictions which will still be in place. Instead of a big, everyone-together, plant sale, individual members will hold plant sales on their front drives or gardens. Keep an eye out for more information. I have lots of cuttings and seedlings, and hope to be one of those selling. See you on our front drive!

Gina Lane, Girton Garden Society

C&C BLINDS
www.freewebs.com/candcblinds
SPECIALIST MANUFACTURERS OF:

- Vertical Blinds
- Roller Blinds
- Dutch Blinds
- Venetian, Wooden, Pleated, Roman
- Awnings
- Cleaning Service

any size, any colour
free measuring & fitting
shop in the comfort of your own home. FREE ESTIMATES

email: colincoleman64@hotmail.com
tel: 01223 211171
mobile: 07761 262070

STEAMROLLER IRONING SERVICE



GOOD RELIABLE SERVICE
PRICE 1LB IN WEIGHT = £ 1.35 (MIN £15)
**If you have tried the rest,
now come to the best!**
SUSIE 07742 319631 / 01954 210672

Traditional Restorations
Quality Restorer for All Types of Furniture

Repairs, French Polishing & Modern Lacquer Finishes
Re-Upholstery (Quality fabrics at Trade Prices)

Jon Porter
Providing a Friendly Local Service for almost 20 years
Free Advice and Quotations Provided

Tel. 01223 835515 Mob. 07932 611184
email - traditionaljon@live.co.uk

For all your plumbing, electrical, heating and general maintenance needs
Call Chris on
07802 807237
for immediate advice and free estimates



Prime Plumbing & Electrical

22a Cambridge Road, Impington, Cambridge CB24 9LR
Tel/Fax: 01223 237795
e-mail: primeplumbing@yahoo.co.uk

Dry Cleaning & Laundry

- Dry Cleaning
- Curtains
- Repairs & Alterations
- Leather & Suede
- Wedding Dresses
- Rug Cleaning
- Ironing Services
- Laundry




143 Milton Road Cambridge CB4 1XE
01223 755 180 www.FarthingsCambridge.co.uk

Rothwell's Carpet Cleaning 01223 832 928
www.Rothwells.biz

A few points that make us stand out from the others,

Rothwell's has been in business since 1993.
We're an honest local family firm.
Our large truck mounted machines mean more cleaning & drying power.
Members of both the NCCA and TACCA.
We will move the furniture for a thorough clean.
100% satisfaction or it's FREE.

Call Oliver and Max Campbell for expert help today.

Cottenham Computers
01954 593025
Call the experts for good honest advice



We will come to your home or business to fix your computer

Got any of these issues?

- ✓ Computer crashing
- ✓ Network Wi-Fi connection Issues
- ✓ Virus / Malware infections
- ✓ Windows won't boot
- ✓ Can't access your email
- ✓ Can't access the Internet
- ✓ Computer running very slow

Services

- ✓ PC & Laptop Repairs & Upgrades
- ✓ Macbook & iMac Repairs & Upgrades
- ✓ Broadband / Wi-Fi Installations
- ✓ Full Hardware Diagnosis
- ✓ Hard Drive Data Recovery
- ✓ New PCs & Laptop sales
- ✓ 3 Years Hardware Warranty on New PCs

Working all day? Then we can collect and deliver FREE to and from your home or work place*
* Within 10 Miles of Girton

We cover Girton & surrounding towns & villages

For all computer related problems give us a ring!
www.cottenhamcomputers.co.uk

With over 16 years experience it is likely we have seen your problem before. We are happy to advise you free over the phone..
We don't charge a fortune
So give us a call TODAY! We won't bite!

Brilliant
★★★★★
Neil is extremely reliable and efficient. He sorted my laptop out very quickly and efficiently and talked to me in language I understood, which is very helpful as being a silver surfer it can be confusing. I have no hesitation in recommending him to all."

- Jill - Histon

UK Reseller eset Computer protection intel Microsoft Apple

Brownies

**Madeline
earns six
badges!**



Brownies is currently meeting online but that hasn't stopped us earning our interest badges. I have been working really hard and have earned six badges since September!

The very first interest badge I earned was the archeology one. To earn this I had to complete three challenges. My favourite challenge involved digging in my garden in search of artifacts. I was so excited to find things, including a rusty key, a small glass pot (which we discovered was likely a fish paste pot from the 1940s), a 'dinosaur' tooth (which may actually be a horse tooth!) and a pretty piece of pottery.

I have also earned my languages interest badge. To earn that badge, I learned about Japan and learned to speak over 50 Japanese words and phrases. My uncle is from Japan and my cousin goes to Japanese school, and so after practicing every day for almost two weeks, I called my cousin and spent over an hour on Zoom practicing my Japanese and learning from her. It was really fun and we laughed a lot.

Now that it is spring, I am working on my grow your own interest badge. I will be planting flowers in my garden to attract more wildlife, like bees and butterflies, and my cress, sunflower, pumpkin and bean seeds recently sprouted in the seed tray I started last weekend.

I really like Brownies and can't wait until we can have in-person Brownies!

Madeline, Age 7

If you were a Brownie, Guide or Scout, do you remember earning interest badges? What sort of things did you have to do to earn a badge? If you have any memories that you would like to share we would love to hear from you. Please email Brown Owl at 2girtonbrownies@gmail.com.

Obituary – The late and the great Bob Satchwell



You would often find Bob at The Old Crown, laughing with his 'early doors' crew and enjoying a pint. From his relaxed demeanour, you would never instantly know this was a man who during his journalistic career had exposed major crime, brokered a media blackout over Prince Harry's tour in Afghanistan and established The Society of Editors to champion for press freedom.

Bob arrived in Girton in 1984 with his wife Michele, daughter Anna and two stepsons Andrew and Matthew. This was shortly followed by the birth of another daughter, Ellie, in 1985. Bob had been appointed as editor of the *Cambridge Evening News*, a role he took on with aplomb making it one of the most successful regional newspapers in Britain over his 14-year tenure.

Outside of work Bob loved to sail and spent many a weekend on the South Coast waters with his brother Christopher and friends. He was an avid rugby supporter and during his time at the *Lancashire Evening Post* he set up The Strollers, a third team for Preston Grasshoppers, that became the team everyone wanted to join for its camaraderie, songs and legendary tours!

Embracing Cambridge life, Bob was an advisor to the Greater Cambridge Partnership and Cambridge Futures, as well as being a Trustee of the Cambridgeshire Communities Foundation. He thrived on living in Girton and his home in the High Street became quite a social hub for friends and family, never more so than at the renowned Christmas Eve parties. At these, he would throw open the doors to locals and welcome them in for food, drink and general conviviality.

His popularity was evident as former friends and neighbours lined the High Street as his funeral cortège drove past. Bob will rest peacefully at St Andrew's Church next to his beloved wife Michele who passed away in 2013. He was a much-loved father, brother, husband, son, grandfather and friend who will be missed but never forgotten.

G.S. DECORATING

CITY & GUILDS QUALIFIED Est 1988

GARY M SMITH
SERVICE & QUALITY ASSURED



Tel: 01954 781126 HOME
01223 233011 OFFICE
07787 571177 MOBILE

OVER 17 YEARS OF EXPERIENCE IN QUALITY
PAINT FINISHES INCLUDING TRADITIONAL
METHODS & MODERN TECHNIQUES.
DOMESTIC & COMMERCIAL
WORK UNDERTAKEN.
FREE ADVICE GLADLY GIVEN.
REFERENCES AVAILABLE.

P. LOVERIDGE

Carpentry & Locksmith Services

TEL: 01954 202907 MOB: 07811 158018

EMAIL: PAULLOVERIDGE31@GMAIL.COM

ALL ASPECTS UNDERTAKEN

FITTED WARDROBES
ALCOVE CUPBOARDS
KITCHENS FITTED
FIRST & SECOND FIX

LOCKS REPAIRED & REPLACED
EMERGENCY ACCESS
LOCKS KEYED ALIKE
HOME SECURITY UPGRADED

SUMMIT



LANDSCAPES

PAVING - DRIVEWAYS - BRICKWORK
CARPENTRY - GROUNDWORKS



www.landscapingpaving.co.uk
PHONE: 01223-929394

FM FAMILY LAW

We are divorce and family lawyers and mediators. Our team of specialists has over 70 years experience looking after clients going through relationship breakdown.

- Divorce
- Arbitration
- Children
- Separation
- Mediation
- Injunctions
- Negotiations
- Collaborative Law
- Cohabitee Disputes
- Emergency Application
- Financial Settlement
- Court Representation

Get in touch with us now:

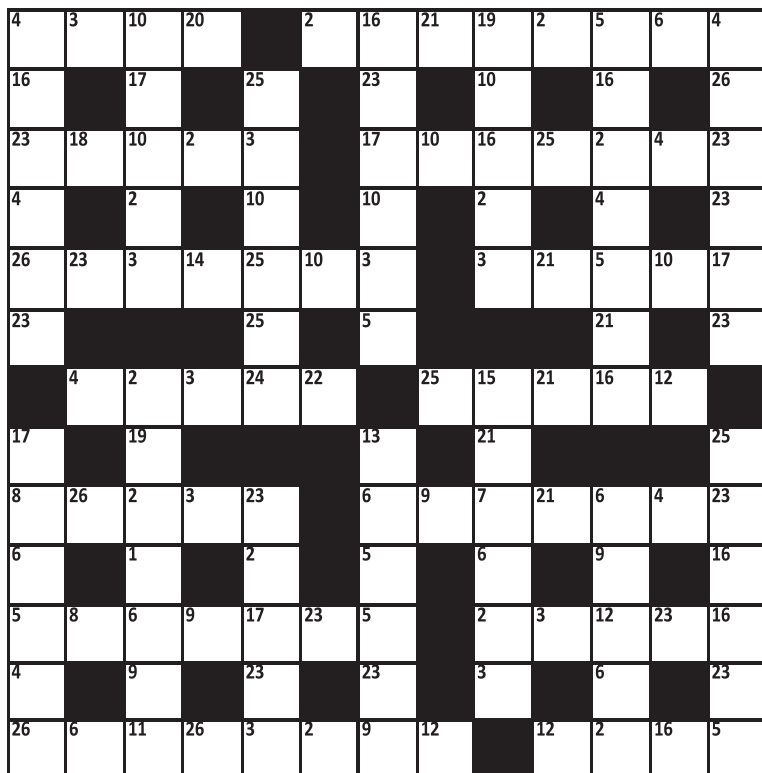
www.fmfamilylaw.co.uk
01223 229933

we understand family matters and we
are here to help you and your family



Regulated by the Solicitors Regulation Authority no 559228

puzzle corner



| CLUES | |
|-------|----|
| 1 | 14 |
| 2 | 15 |
| 3 | 16 |
| 4 | 17 |
| 5 | 18 |
| 6 | 19 |
| 7 | 20 |
| 8 | 21 |
| 9 | 22 |
| 10 | 23 |
| 11 | 24 |
| 12 | 25 |
| 13 | 26 |

CODEWORDS

Each number 1–26 represents a different letter of the alphabet. Can you work out which is which? Use your word skills and the clues included. Note that Codewords can include names or well-known phrases.

The solution is on page 19.

WORDSEARCH – Look out for things linked to climate and the environment!

Can you find all these words in the grid? They can read left to right, right to left, up or down or diagonally. Tick them off as you go.

| | | | | | | | | | | | | |
|---|---|---|---|---|---|---|---|---|---|---|---|---|
| R | S | E | A | E | L | C | Y | C | E | R | X | P |
| E | T | S | A | W | T | U | R | N | O | F | F | W |
| T | I | D | E | S | R | E | T | T | I | L | A | E |
| A | R | B | N | O | B | R | A | C | F | L | A | D |
| W | P | I | C | K | I | N | G | E | K | O | N | T |
| N | C | K | A | D | I | R | B | Y | H | I | R | N |
| I | N | W | I | L | D | F | L | O | W | E | R | I |
| A | R | O | L | F | W | E | P | W | E | N | E | R |
| R | S | O | L | A | R | S | L | S | U | N | D | P |
| B | P | Y | E | E | B | U | A | R | O | A | U | T |
| U | N | A | T | U | R | E | N | A | I | E | C | O |
| Y | Y | T | I | C | I | R | T | C | E | L | E | O |
| C | I | T | S | A | L | P | E | T | M | C | B | F |

| | | |
|-------------|------------|------------|
| ACT | LITTER | RUN |
| AIR | NATURE | SEA |
| BEE | ONE | SOLAR |
| BUY | PICKING | TIDES |
| CARBON | PLANT | TREES |
| CARS | PLASTIC | TURNOFF |
| CLEAN | POLLINATOR | WALK |
| ELECTRICITY | RAINWATER | WASTE |
| FLORA | RECYCLE | WILDFLOWER |
| FLY | REDUCE | WIND |
| FOOTPRINT | RENEW | |
| HYBRID | REUSE | |
| ICE | ROCK | |

GIRTON scoreboard



Girton Bowls Club

With the easing of lockdown rules and in line with Government Guidelines, it is starting to look more positive for the start of the new bowls season. We have three pre-season friendly matches planned: the first at

home to City Bowls Club on Monday 19th April at 6.00pm, the second away to Newnham on Thursday 22nd April at 2.00pm and the third away to Stretham at 2.00pm on Saturday 24th April.

Our first Club night is scheduled for Thursday 22nd April at 6.00pm, when we hope to see lots of familiar faces and perhaps welcome a few new ones too. May I include a gentle reminder to all our members that their annual subscriptions are due.

Our competitive season is due to start around the end of April, which I am sure all our players are looking forward to. We have also arranged our Annual Open Triples competition, sponsored by Peasgood and Skeates, which is scheduled for Saturday 24th July. We will be inviting all those Clubs who participated in 2019 and those who expressed an interest in the 2020 event before it was cancelled. After circulating details to the League Secretaries, we hope to be able to welcome some new entrants too.

As reported in last month's GPN, the Club is keen to pursue the option of building our own Club House on



Powerman

site. So far we have received positive feedback from the Parish Council and will now be seeking the opinions of the Town Council and also the local residents. We are currently in discussions with 3 companies who supply budget cost modular buildings, as part of our feasibility study.

We are also pleased to report that the Club has successfully secured sponsorship from several local businesses, in addition to our main sponsors, Peasgood and Skeates. These are The Old Crown Girton, Redmayne Arnold & Harris, and The Urban Car Co Bar Hill, with two more in the pipeline, that we hope to finalise before the beginning of the season.

Once again, our thanks go to our wonderful volunteer maintenance team who have worked so hard over the winter on our green to ensure it is in the best possible condition for the start of the new season.

If you are interested in finding out more about joining Girton Bowls Club, we are always pleased to welcome new members. Please contact our Secretary Lynne McGill at lynnemcgill63@hotmail.com. You can visit our website at girtonbowlsclub.weebly.com.

Lynne McGill



Girton Golf Club

Writing this in the middle of March I have my fingers, legs and anything else I can manage crossed, in the hope that nothing happens to stop us opening our course to our members on 29th March. That date provides a little bit of light at the end of a dark

tunnel for many people, and we will be thinking of the members who are no longer with us and remembering their faces and hearing their voices when we get back to our course, and clubhouse, in the coming weeks. That won't stop us, of course, moaning about our bad luck when our shots go astray and complaining about the good fortune of our playing companions when theirs don't. We will all be grateful, however, to be able to play at all.

Understandably, I think, we will not be allowing visitors or even guests onto the course in the early days, so until 17th May it will be just the members enjoying the golf – membership is still open so call the office if you would like to be playing too. Our bar and catering team will be offering a take-away service at the half-way house for those who would like some nourishment when going round, and from 12th April will be serving drinks, breakfasts and lunches outside at the patio tables. It will be 17th May before we open fully indoors, still adhering to the rule of 6, of course, and asking that masks be worn when moving around inside, but with a normal menu and table service.

Our new Head Professional Sam Beckett is now fully ensconced and will be putting together his new

Academies as soon as it is possible to do so, meanwhile he is available for coaching lessons and his Shop Manager Fin Swan would be delighted to see you for sales of clothing and accessories plus clubs and club fitting.

We take the wellbeing of our members very seriously at Girton Golf Club, so we have a team of First Aiders, a Mental Health First Aider and a Club Welfare Officer who has particular focus on, and responsibility for, our younger and more vulnerable members. Playing golf is great for both physical and mental health and we want to ensure that not only are we open for all to join, but also that we look after those who choose to play the game with us.

Membership for Juniors is only £65 per year, that represents fabulous value for money for 7 day membership at our golf club. Juniors are 18 and under and we have very special rates for students also, call the office to enquire. What a great birthday or Easter present!

We also offer a range of membership options for all ages, with great rates for all and very attractive rates for the under 30s. The Pro Shop or office can quickly get you playing, and our friendly club will soon have you on the course with new friends.

As we move forward this year our calendar of social events will start again so if you just want to have somewhere local that you can go for lunch, or a coffee, maybe an evening of fun and entertainment, where you belong then join us as a Social Member. Call in and chat to the bar staff or call the office for more information.

We are up and running again – let's have some fun and companionship, and great, great exercise. See you on the course, or in the clubhouse soon.

Alan Henderson-Smith
Tel: 01223 276169
www.girtongolf.co.uk



Girton Tennis Club

Our AGM was held online on the 10th March this year and we were delighted to welcome a few members to the meeting as well as most of the club committee. The minutes from

the meeting are published on our website should you like to read them.

Assuming the roadmap plans to come out of the recent Covid lockdown have not changed, we should have re-opened the courts for booking and use from Monday 29th March. The same restrictions that we had to follow at the end of 2020 still apply so please check our website if you are not sure about these.

Our first post-lockdown club session for 2021 is scheduled for Friday 2nd April and we hope to be able to start running supervised sessions for our junior members again after Easter. The Club membership year starts in April and those that were members last year should have received emails with details of how to renew their memberships. Our fees are very good value and, as a member, you can purchase a court key which enables you to access the courts whenever there are no prior bookings. Please see our website or the advert elsewhere in this GPN edition for details of 2021/2022 fees. We would encourage you to join our friendly club soon and enjoy some outdoor exercise.

The tennis club has use of the Recreation Ground courts and members who purchase a key and have a confirmed booking have court access during most daylight hours. Club members meet and play from around 7.30pm to 9pm on Friday evenings. Potential new members are very welcome to come along to our Friday club nights for one or two free sessions to check it all out.

Details about our activities can be found on our website www.girtontennisclub.uk or by contacting our Membership Secretary Kevin Keeves by email at info@girtontennisclub.uk.

Alan Franklin



Girton Tennis Club

Would like to encourage you to apply for membership of our friendly, local club.

Membership Benefits

Court access until April 2022
Professional coaching sessions can be booked
Opportunity to play in a team and at club nights
Free supervised tennis sessions for children

Membership fees are:

| | |
|------------------------------------------|------|
| Family (up to 2 adults and children): | £136 |
| Single adult: | £68 |
| Junior (under 21 if studying full-time): | £30 |

Application forms and coaching information is available on our web site at
www.girtontennisclub.uk or email
info@girtontennisclub.uk for information.



Girton Colts Football Club

Football is back, training has hopefully restarted by the time this is published with matches following later in April.

If you want to get involved please contact info@girtoncolts.co.uk.

Andrew Hawkes

Thank you Ray Gordon

After some thirty years, Girton Allotment Society is saying goodbye to one of our most dedicated founder members. Ray and Diana Gordon have moved to live near their daughter, in Staffordshire. Ray is known throughout the village for his voluntary and charity work and has been connected to the allotments in Girton for more than 70 years. His father had an allotment on the site when Ray was 12.

The family lived in the village for many years and Ray bought his bungalow in Pepys Way, with a large extended garden that backs onto the allotments. Many of our members recall visiting Ray's garden, which is beautifully landscaped. A literal 'lake' at the centre was a rich source of pond life. One feature we all know well was the regular visiting heron, which now quite often perches in a tree on the allotment border.

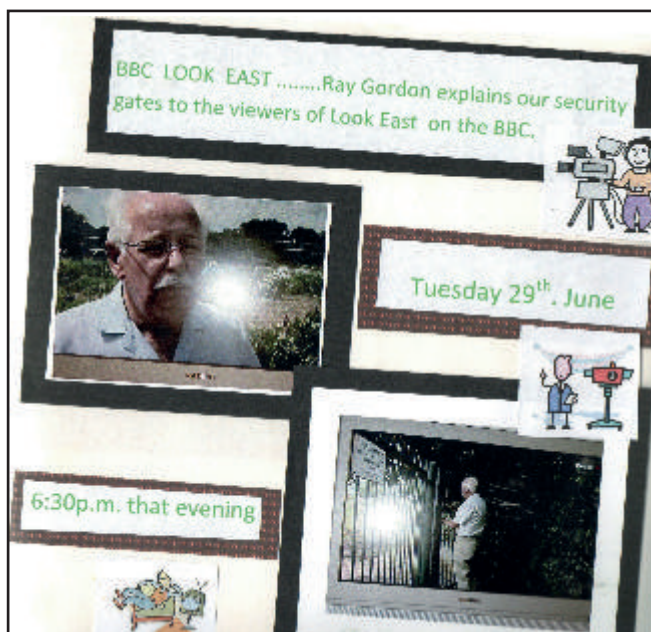
Needless to say, Ray and Diane's garden was their pride and joy, and a pleasure to see for all who were invited to visit. Hardly surprising then, that at the bottom of the garden is a large gate, built by Ray, which led directly onto his plot! He dedicated many hours to his allotment, which was an exemplar for all of us mere mortals.

Ray was involved in and led a number of projects with his friends and neighbours on site, which we benefit hugely from today, and without which, the site would be a poorer place.

1. Two pumps were sunk, in 1994 and 2004, which have supplied us with water in the driest of summers. Where would we have been without them the last two years?



2. A French drain was dug, around the same time, which meant that a large boggy area is now a very productive area.
3. The Hazel Coppice was planted in 1999 to assist drainage, and this now provides an environment for a range of wildlife, including invertebrates, mammals, and even nesting birds.
4. Secure fencing and gates were installed around 2010, which significantly improved the site security, earning Ray a TV appearance on Look East!



Although the allotment site has been in existence as part of a larger site, since before 1800, it was only in 1993 that the Girton Allotment Society was formed. The allotment committee manages the site on behalf of its joint owners - the Church and Girton Town Charity. Ray was a very active member of that original committee, and served it in many roles, including chair, for eight years, vice chair, and site manager. This has meant that the society has been able to manage and be responsible for the ongoing development of this quite unique site. Quite a legacy!



Ray will perhaps best be remembered, by many of our more senior serving allotmenters, for his dogged persistence in leading the effort to literally regenerate the allotment site. At one time the land had been host to a piggery, and there was a considerable amount of old rubble and waste on site. At this time, in the early 1990's the site was at risk of being lost to the wilderness and threat of closure – and even a possible housing development. Together with a group of hard-working members, the site was brought back under control, tracks and pathways re-laid, rogue saplings, trees, and dumped rubbish removed, plots laid out, and even ploughed, much to the design of the present day. Over 20 years later, many of that original doughty and determined team are still working their plots today, and we who are fortunate to have plots today, owe them all a debt of gratitude.

Ray, who was my neighbour on site, until he retired just a few weeks ago, even constructed a special tool, to mark out rows equally!

So, now he has retired, how will we remember Ray, and provide some lasting memory and a tribute to his years of commitment? Ray built a shed on the site some time back. No ordinary shed, but raised on a brick base, with industrial strength timbers, big enough to house a tractor! It has been suggested, and generally agreed that this becomes 'Ray's Shed', and after a refurbish, will be a communal meeting place on site, as a shelter from the elements. Members will be able to sit, have a cup of tea maybe, and no doubt a chinwag – when we can

meet together again, that is! This will not be the only celebration of Ray's lasting contribution to our village community of course, but a focus on just one aspect of a very much larger, and very full life in the village.

From all at Girton Allotments, we thank you Ray and Diane. Have a rest, and enjoy your retirement. We will do our best to continue the tradition!

*Malcolm Frew, Chair
Girton Allotment Society*

Please note that letters or cards for Ray and Diane can still be left at their house in Pepys Lane. Their son Steven will pass them on.

George's Garden Tip – April

Silent Spring – no, not the seminal book of that title, but the start of lockdown a year ago; such a strange time with so many of our usual routines curtailed and an almost eerie quietness as motor traffic practically ceased and in the remarkable spring sunlight, I heard so many birds singing. The traffic is considerably noisier this spring but the recent experience of having been so aware of the birdsong has primed my hearing to notice it more than in years before. Such observations are widely reported, as huge numbers of people slowed down and tuned in to nature – and enjoyed it. After just 20 minutes in a green space serotonin levels can rise and lighten our mood, and if you add the pleasure of achieving simple physical activities no wonder gardening is a great antidote to pandemic blues.

April can be a tricky month for gardeners weatherwise, but for many of you it may be the first time for ages that with extra time at home you have managed to tick off a lot of the winter tasks and are well be on the way to a busy spring. A few points to check though; have you pruned all the deciduous shrubs that needed attention, if not don't delay. Have you managed to plant out all the plants that have been sitting around, stoically awaiting their new homes? Have you taken the opportunity to jot down (somewhere where you'll find it again) ideas for what's looked good and what needs re-working?

George Thorpe

puzzle
corner

Solution to this month's Codeword on page 15:

| | | | | | | | | | | | | |
|----|----|----|----|----|----|----|----|----|----|----|----|----|
| 1 | 2 | 3 | 4 | 5 | 6 | 7 | 8 | 9 | 10 | 11 | 12 | 13 |
| Z | A | L | C | T | I | V | W | N | U | G | D | K |
| 14 | 15 | 16 | 17 | 18 | 19 | 20 | 21 | 22 | 23 | 24 | 25 | 26 |
| P | J | R | S | Q | M | B | O | X | E | Y | F | H |


ENTIRE GROUP




The Complete Gas Heating and Plumbing Company


**Plumbing • Heating • Gas
Bathrooms • Water Softeners
Property Maintenance**

Tel: 01954 204044 • Web: www.entiregroup.co.uk
Email: service@entiregroup.co.uk


GINNY
 Police checked and fully insured
 Discretion assured
 From feed visits to living in
 Tel 01223 232972
 or 07980 042601
 Email ginnyr38@gmail.com

HOME/PETSITTING

Bespoke service for pets in their own home


Paul Waldmann Woodwork
 Established 1992
 Furniture made & restored
 Kitchens built
 Cupboards & bookcases
 Garden furniture & fittings
 Made to suit your requirements
 phone for a FREE ESTIMATE 01223 514091
 41 Norfolk Street, Cambridge CB1 2LD
 Email paul.waldmann16@yahoo.com
www.paulwaldmannwoodwork.co.uk

DS ELECTRICAL
 Professional Domestic & Commercial Electricians
 Mob: 07830 349199
 Tel: 01223 521882
 Electrical Safety Register
 ELEC SA + ECA
www.ds-electricalservice.co.uk

R. PETCH
Painter and Decorator
 Quality work since 1962




Internal and External Decorating .
 Wallpapering .
 Friendly and Tidy Service Given .
 Free Advice Given .
 References if Required .
 Free Estimates .

Tel: 01223 861970

E-Mail . petch_decorator@hotmail.com



 www.petch-quality-decorator.co.uk


Keep Your House Happy!
**PAINTING, DECORATING
TILING, PLUMBING**
 All General Maintenance
 Company Maintenance Work
 No Job Too Small, Very Competitive Rates
 Fully Insured
CALL FOR A FREE PROMPT QUOTATION
MKH PROPERTY MAINTENANCE
 Phone 07808056881 or
 Email
enq@mkhpropertymaintenance.co.uk
 Website
www.mkhpropertymaintenance.co.uk


Church End Carpet & Vinyl Centre
 We are a family run business, established in Cottenham in January 1982
 We offer a comprehensive range of quality carpets, vinyls and laminate flooring at highly competitive prices with a great service and fitting.
 76 High Street Cottenham Cambridge CB24 8SD
 Email: sales@churchendcarpets.co.uk
 Tel: 01954 250287
www.churchendcarpets.co.uk
 Open: Monday, Tuesday, Wednesday, Friday: 10:00 - 18:00
 Saturday: 10:00 - 17:00

ARCHITECTURAL DRAWINGS
 FOR
 PLANNING & BUILDING REGULATION APPLICATIONS
 EXTENSIONS, ALTERATIONS, LOFT CONVERSIONS ETC
 CONTACT US now to arrange a **FREE** on-site meeting at your convenience to discuss your project
01353 649649
mail@elydesigngroup.co.uk
ELY DESIGN GROUP
www.elydesigngroup.co.uk



News from Girton Glebe Primary School

We were delighted to welcome back pupils and families to Girton Glebe on Monday 8 March after a long closure and are so pleased to

see our classrooms filled, once again, with eager, engaged learners. Class teachers are now supporting the children on their return to education by assessing academic progress and tailoring provision to support mental health and wellbeing. Social and emotional support is always at the core of provision at Girton Glebe and the three weeks preceding the Easter break have been spent supporting reintegration to classrooms and developing learning behaviours and resilience. We are so impressed with the positive attitudes that our pupils have returned with and are delighted with the way they have settled back into full-time education so quickly.

Kindness Week

The week of March 15 saw all pupils at Girton Glebe take part in Kindness Week. Throughout the week, children explored the meaning of kindness, looked at how they could show kindness to others and investigated the effect that showing kindness has on your own mental health. The week began with a virtual whole-school assembly, which shared stories of kindness, and finished with each class sharing their experiences of kindness week in an assembly on Friday afternoon. It was lovely to hear the children's reflections on their learning and so inspiring to hear of their random acts of kindness across the week.

Race across the World

The penultimate week of term saw our pupils getting active in an inter-school challenge led by Cambridge United. Race across the World encouraged primary-aged pupils from a number of local schools to log all of the activities that they had completed across the 7-day challenge, with each mile logged taking the pupils across the globe from their school's location. We were delighted to win the competition, travelling a total of 6,639km!

Mr Andrew Spencer
Headteacher
Twitter @GirtonGlebePS



Friends of Girton Glebe School Fundraising

Sadly due to COVID-19 FOGG have not been able to run the usual calendar of events to help raise funds for the pupils of Girton Glebe

Primary School. Usually each year we hold two jumble sales, school discos, a quiz, an Easter event, and other small events together with the fantastically successful Christmas Fair. All these events help raise a large amount of money to support the school. In previous years FOGG have raised over £10,000 a year and every year this money helps enrich the schooling of each and every pupil in the school.

The money raised by FOGG has paid for:

- Science week events
- Game tables
- Annual Athletics subscriptions for the whole school
- Books for each class
- A new electric piano and stool
- Sing Up trips
- The school orchestra leader and keyboard lessons for classes
- Items for the forest school
- Murals in the playground
- Curriculum software and resources, topping up curriculum budgets
- Repainting the swimming pool and the pool area
- Enrichment days include Spanish dance lessons and drumming workshops
- Cameras to allow teachers to record lesson activities
- Gardening equipment
- New sheds for playground games and forest area
- A virtual Christmas panto
- Hoodies for Year 6 leavers
- Art packs for pupil premium families
- Coach travel to enrichment events and visits
- Enhancements for the school grounds, for example, blackboards, posters and games
- Magazine subscriptions for the library for use by the whole school

as well as many other activities and items supporting the pupils and their education.

If you would like to make a donation to help FOGG support the school this year while our events cannot take place please go to www.cafdonate.cafonline.org/16149. Your generous donation will help support and enrich the schooling of the pupils of Girton Glebe until FOGG are able to begin their fundraising events again.

If you have any questions, please contact us at contactfogg@gmail.com.

Thank you for all your support.

The FOGG Committee
www.foggpta.org.uk
Registered Charity 1098145

Suffolk Terrace welcomes its first residents

The beginning of April saw the arrival of the first people to live in Suffolk Terrace on the former WI Hall site. The three new almshouses, funded by Girton Town Charity, were completed despite the challenges of the pandemic and Winter weather.

The successful applicants for the homes, all with very close Village connections, have been given a three-year appointment in line with GTC almshouse policy.

Named Parsley, Pond and Searle after the first Trustees of the WI Hall, the name of the terrace also reflects a special piece of Girton history.

The original First World War building to house the 11th Suffolk Battalion was purchased at a Ministry of Munitions sale by the WI and relocated from Cherry Hinton to Girton by horse and cart in 1920.

Opportunity

One of the cottages will be occupied by Florence and Callum who are excited about moving into their own home in the Village and the opportunity it will give them to save for a deposit on a house.

Florence is a paediatric nurse and Callum is a respiratory physiotherapist, both working at Addenbrooke's Hospital.

Florence says: "My family home has been in Girton since I was seven years old. Callum and I both relocated back to Cambridge from London to save for a house deposit and have been living with my parents in the Village for the last year.

End goal

"We saw the advertisement for the almshouses on the noticeboard outside the Village Co-op in November, as well as the advertisement in Girton Parish News. We knew straightaway that we should apply as it would be a great opportunity to be able to live in the Village independently, whilst also saving up for a deposit for a house which is our end goal. Being able to live near my parents and within easy reach of work also appealed to us both.



GTC Chair Ann Bonnett hands over the keys to Florence and Callum.

"Completing the application form was very straightforward and we were then invited for an interview by a panel of three people who asked us questions about ourselves, why we would be suitable for the almshouse and what we would be able to achieve if we were offered it. We were both a little nervous at first as it was slightly strange being interviewed with your partner but it turned out to be a good experience.

Looking forward

"We were really excited to hear we had been successful. It has given us so much to look forward to, knowing that we can stay in Girton for the next three years and start planning for our future. As Cambridgeshire is such an expensive area for property, this opportunity gives us just the boost we need.

"We would definitely encourage other people to apply for an almshouse as and when they become available. The process has been so easy and the Charity is so approachable. It has given us both reassurance to be able to save over the next three years whilst living in a Village we know and love."

Benefit

Ann Bonnett, Chair of GTC says: "We are delighted that Suffolk Terrace is now completed and to welcome our new residents, including Florence and Callum who can really benefit from having the time to save for their own home, whilst living near to family.

"The three cottages sit well in their surroundings and offer comfortable homes, finished to a high standard and with good energy-efficient features. I would particularly like to thank our appointed contractors for the project, Godfrey & Hicks who were also our contractors for the William Collyn Centre. The period of construction has been during one of our most challenging years and they have delivered a high standard of work, against the odds.



Special thanks

"Paul Winter, the Site Manager deserves a special mention for his part in making the process a positive experience. During the time he's been in the Village he's got to know our community and chatted to residents in his characteristically cheerful way about the construction process. In turn he has received many favourable compliments about the building work. His contribution is very much appreciated."

GTC 500 Year Anniversary

2021 marks the 500th anniversary of the founding of Girton Charities in the Village and GTC intend to celebrate the occasion in some way later this

year. As Government guidelines may not allow a public event we may look to commemorate this important milestone with a Village enhancement.



Educational Grants 2021

Applications for an Educational Grant are invited from young people over 18 leaving secondary education and moving on to higher education and some training schemes or NVQ qualifications Level 4 and above.

The Grant covers books, equipment, tools or other direct costs relevant to the course and is a maximum of £300* per year for up to four years.

Next payment date for grant applications received will be July 2021.

Applicants must have lived in Girton for a minimum of two years immediately before leaving secondary education.

Contact the GTC office for an application form.

* Terms and conditions apply

Girton Town Charity exists for purposes which include the relief of need in Girton, either individually or collectively, or the support of any charitable purpose for the benefit of the inhabitants of Girton.

Enquiries on behalf of individuals or village organisations may be made in confidence and addressed to any of the Trustees below:

| | |
|---------------------|-----------------|
| Ann Bonnett (Chair) | t: 276354 |
| Marc Bermann | t: 277319 |
| Dan Buck | t: 07775 839703 |
| Colin Carr | t: 276312 |
| Dr Robin Hiley | t: 277296 |
| Patsy Smith | t: 07503 282199 |

GTC office:

22 High Street, Girton, Cambridge CB3 0PU.
Open 10.00am–2.00pm Monday–Friday.

01223 276008

email: gtc@girtontowncharity.org.uk

www.girtontowncharity.org.uk

Girton Town Charity Registered Charity No: 1130272



Earlybirds WI

A new, local WI – Earlybirds - was launched in 2019 by a small but fabulous group of women who wanted to be

able to meet during the daytime. It was decided to open up the group to anyone within the Cambridge Federation so our members come from various places in and around Cambridge, some members choosing it as a second WI to belong to.



Pre-Covid, meetings were held on the second Friday each month at the CFWI office in Girton, and more recently online. Before the pandemic we enjoyed talks ranging from Bee keeping to modern slavery, from Flanders and Swann to internet scam awareness. During the pandemic, online talks have been just as amazing, with garden designers, whale conservationists, and speakers from charities such as Mercy Ships. Using technology has meant we can introduce our members to speakers from further afield, bringing a wider range of topics to our group. We believe in opening doors wherever possible.

Our next meeting is on Friday 9 April, with an online talk entitled 'Adventures of a Supply Teacher'. There are probably several WI members who can relate to that. The talk begins at 10.45am and we usually open on Zoom from about 10.30.

If you are interested in joining this friendly group of Earlybirds please email our president Rachel on earlybirds.wi.cambridge@gmail.com.

News for Older Residents

Many thanks to everyone who contributed to the Memories Project. I hope you enjoy reading the finished product which is coming your way soon!

With spring weather and the easing of restrictions hopefully we can all get out and about more. I, for one, have done too much sitting around over the winter and need to get more active.

Have those of you with mobility problems ever thought of getting a mobility scooter? If so, now might be a good time to think about it, as two mobility scooters are available in the village.

1. The Sterling Pearl 4 has had one owner from new, in June 2010. It is now out of production but see the photograph and the specifications can be viewed on this web page www.dsllmobility.co.uk/product/sterling-pearl. There is no charge, but a donation to charity is requested.
2. The Pride Colt Twin has also had only one owner from new, about five years ago. The details can be viewed at www.pride-mobility.co.uk/pride-scooter-range/colt-twin.html. It cost in the region of £1,000 – there is plenty of room for negotiation about the price.



For more details about either of these scooters, get in touch with me.

And do contact me about any of the following:

- an Amplicomms PowerTel 50 alarm plus phone, boxed and with the user guide
- unused 100 watt bayonet light bulbs for giving away
- jigsaws, so far I have had no takers for the wasgijs
- knitting little hats for The Big Knit
- last but not least, those interested in finding new walking companions.

Patricia Johnston, Older Residents' Co-ordinator

Email: patricia.johnston@ageukcap.org.uk

Tel: 07649 660866





Hopefully

The lockdown is beginning to ease and hopefully we will be able to meet up soon. It maybe that we will have to meet outdoors but, using my second ‘hopefully’, the weather will improve and we will be able to

sit outside or take some gentle exercise and chat. It could be that we will be able to enjoy a meal out together soon.

In the meantime our stories project is well on its way to completion and, ‘hopefully’ (my third) with the wind behind us and good weather prevailing, we should be able to deliver a souvenir edition of the *Girton Parish News* dedicated to your stories, around the weekend of 17th April. I have enjoyed reading them and most of them will be published in that edition. Presently we are in the process of making an audio file of the whole booklet and, as you can imagine, this is a lengthy process using the tools that we have to hand.

Using my last ‘hopefully’, we will be able to organise some sort of meeting soon, albeit outdoors.

Sam Clift

Tel: 07850740721 or email samclift@ntlworld.com



Listening Lantern We all have mental health

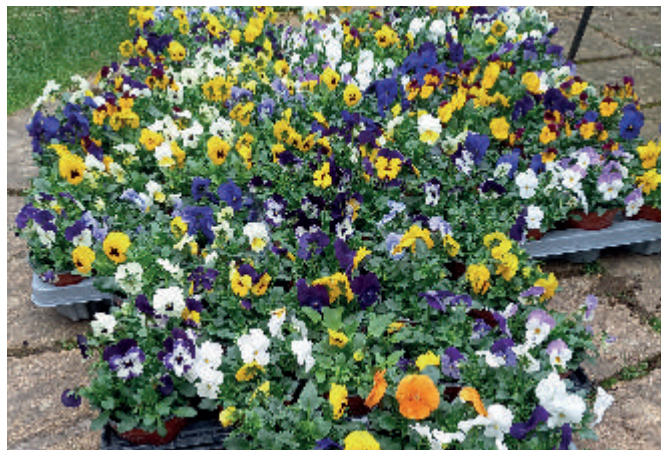
The conversations and contact which have been sparked by last month’s article have been wonderful – there have been emails plus

messages and interaction on my Facebook page as well as socially distanced chats or comments while on my walks around the village.

When the subject of mental health is opened and when we know that there are people who will listen non-judgementally to us, we are more likely to share our own experiences, thoughts and feelings. Openness and acceptance will help to reduce stigma and discrimination.

Signposting

Major or severe depression is thought to be one of the leading causes of disability worldwide. It can seriously impact people’s work, relationships and ability to lead a fulfilling life. There is support and help, for example www.depressionuk.org is a self-help organisation that offers support to everyone affected by depression. Mindful March’s calendar was shared last month – did you try any of the activities out? You might like to take a look at April’s themed poster at www.actionforhappiness.org.



Random acts of kindness

A month ago I approached our Girton Co-op store member pioneer to suggest a joint sponsorship of a village random act of kindness idea. With the purchase of pot plants at cost from Peter Graves Florist, Listening Lantern Mental Health Training and Girton Co-op funded 100 plants to be doorstep delivered. There were also deliveries to the care homes, assisted living establishments and the schools and nurseries in the village.

Did you receive a colourful surprise on your doorstep? These people did and this is what they said:

“Yes! We were one of the lucky ones. It made our day 😊”

“I got one, thank you so much x”

“Brilliant – what a lovely idea 🌸🌸🌸”

I hope this small gesture brightened the day for the randomly selected recipients!



Juliet Adlouné, a longstanding Girton resident, is a fully qualified and accredited Adult Mental Health First Aid Instructor experienced in delivering the full suite of MHFA courses and committed to supporting mental health within her local community. Contact her via: www.facebook.com/listeninglantern.julietadlouné or mhfa.julietadlouné@gmail.com.

We are enrolling in your area now

For little **boys** and **girls** who love to learn and dance!

tiny toes ballet

Learning through dance



Award Winning



FEATURED IN...
DancingTimes
THE DANCE TODAY

Cambridge

Visit our website or contact
Miss Oonagh on 07966141213

New classes at the William Collyn Community Centre on Wednesdays:

9.30am: Twinkle Toes for walking to 2.5 years

10.15am: Tip Toes for 6 months to walking

11.00am: Talent Toes for 2.5 to 4 years



www.tinytoesballet.co.uk/Cambridge



oonagh@tinytoesballet.co.uk



K & S Services

All Aspects of Carpentry & Joinery
Internal/External Painting & Decorating
Wall & Floor Tiling Laminate & Wood Flooring
Kitchen Fitting Bathroom Refits
Fencing Heating Systems

84 Pheasant Rise, Bar Hill, Cambridge CB23 8SB

Tel: 01954 200869 Mobile: 07548 796094



**Carpet, Upholstery, Rug
& Stone Floor Cleaning**

For the Most Thorough Clean Ever or It's FREE!

"Impressed that you got hose from the van down the back garden. More impressed that you cleaned stains out of a 12 year old carpet. Clearly a superior service. Thank you." Mr Tim Recordon, Girton



Call today 01223 863 632

Please quote Girton 1

RAH BUILDING LTD

EXTENSIONS REFURBISHMENTS MAINTENANCE

RAH Building Ltd. work closely with private clients as well as landlords and property investors.

We can assist with regular, minor day to day maintenance tasks as well as comprehensive refurbishment projects and extensions.

Contact us now to discuss your next project.

01223 819329

info@rahbuilding.co.uk
rahbuilding.co.uk

ARTISAN LANDSCAPES

Est. 1988

www.artisanlandscape.co.uk

Paving, Fencing, Pergolas, Ponds, Pruning, Structures etc

jonathan_ashman@hotmail.com

07768 821354

Jonathan Ashman Artisan Landscapes



Jesus did not come back from the dead

You might be slightly surprised to see a Church of England priest entitle a column in the parish magazine: “Jesus didn’t come back from the dead”. It’s not that I’m a woolly liberal and believe that the resurrection is just a metaphor. I don’t believe that Jesus didn’t *really* die either – the evidence seems quite persuasive that Jesus of Nazareth actually died on the cross all those years ago.

Nonetheless, there’s a really important point to make here. Christians emphatically do *not* believe that Jesus came back from the dead. What happened on Easter Sunday was much more important than that.

We occasionally hear about people coming back from the dead – being resuscitated after they have died. One example that sticks in my memory is that of Fabrice Muamba. Back in 2012 he suffered a cardiac arrest while playing for Bolton Wanderers against Spurs. His heart stopped for 78 minutes and yet, extraordinarily, he came back and now coaches the youth team at Rochdale.

There are lots of other examples of people “coming back from the dead”. Indeed, in the Gospels there are many accounts of Jesus resuscitating dead people. The common theme with all of these people who returned from the dead is that they went on to die again (or will die, in the case of Fabrice Muamba).

Christians believe something very different about Jesus. They don’t believe that Jesus came back from the dead; they don’t believe that Jesus was resuscitated. The Christian understanding of Easter is that Jesus passed through death and defeated death and inaugurated a new creation in which death no longer has the final word.

The reason we celebrate on Easter Day is that Jesus’ triumph over death is the first fruit of the new creation which we hope also to enjoy after our own death. Christian hope for life after death is not hanging around forever in heaven – it is a new creation in which our existence is characterised by the defeat of death. Instead of our current life, in which the movement towards death is ever present, the life of the new creation is characterised by a movement towards ever-greater life! As St Paul puts it, the resurrection life which began on Easter Day, is a changing from glory into glory.

So no, Jesus didn’t “come back from the dead”. It was something far better. As Christians around the world will celebrate each Easter:

*Lo! Jesus meets us, risen from the tomb;
Lovingly He greets us, scatters fear and gloom;
Let His church with gladness hymns of triumph sing,
For the Lord now liveth, death hath lost its sting.
Thine be the glory, risen conquering Son,
Endless is the victory thou o’er death hast won.*

Michael Bigg

Church clock

The church clock recently had an automatic winding mechanism installed, but something has failed. Smiths of Derby, our friendly horologists, are on the case to repair it. However, with many churches deliberately stopping their clocks during the first lockdown (and then being unable to restart them) the niche church clock maintenance industry is rather inundated with service requests at the moment.

Some have suggested that a stopped church clock is a philosophical statement about the way in which so many things in life at the moment seem to be on “pause”...

We hope to have it back in action in the next month or two!

Churchyard

The churchyard is now open again to walkers after the winter closure. Adults, children and well-behaved dogs are very welcome in this special place.

Public Notice – Parish Church Electoral Roll

The electoral roll for St Andrew’s Church is reviewed annually. The current update began on 28 March and closes on 26 April before the Annual Parochial Church Meeting (APCM) which will be held after the service on Sunday 16 May.

Anyone who lives in Girton, is baptised, is over 16 years old and considers themselves to be a member of the Church of England is welcome to be on the electoral roll. Being on the roll entitles you to stand for election to the Parochial Church Council and to speak and vote at the APCM.

Application forms are available in the church or can be downloaded from the church website www.girton.church. Completed forms should be returned to the church by 26 April at the latest.

Please note that if you are already on the electoral roll you do not need to apply again. If you have any questions, please direct them to the electoral roll officer: er@girton.church or speak to Michael.



Girton Golf Club

The Networked Golf Club

Join as a 5 day or a 7 day Member

and Play Over 60 other UK Courses for Free

Low membership rates for juniors, students and the under 30s

Ask for details of Sam Beckett's new Junior and Adult Academies

Join now – no visitors or guests can play until May 17th

Our Club House is Open Daily 9 am to 4 pm

Outside tables only from April 12th to May 17th

Please wear your masks when inside after May 17th

(all assuming Covid rules do not change)

Breakfast/lunchtime menu with daily specials

Call in for tea, coffee or something stronger

Girton Golf Club

Dodford Lane, Girton, Cambridge CB3 0QE

Tel: 01223 276169 www.girtongolf.co.uk info@girtongolf.co.uk

Follow us on Facebook, Twitter and Instagram



Rector: Revd Michael Bigg
Tel: 01223 202145
Email: rector@girton.church
Website: www.girton.church

Associate Priest: The Revd Christine Barrow
Tel: 575089
Email: mcbarrow@me.com

Licensed Lay Ministers:
Mr Dugald Wilson Tel: 276940
Mrs Christina Deacon Tel: 525337

Churchwardens:
Mr Bruce and Mrs Wendy Hunter
Tel: 503958

Sunday Services: April

| | | |
|------|---------|------------------------|
| 4th | 8.00am | Holy Communion |
| | 10.00am | Holy Communion |
| | 7.30pm | Taizé Service (online) |
| 11th | 10.00am | All Age Communion |
| | 6.00pm | Evening Prayer (BCP) |
| 18th | 10.00am | Holy Communion |
| | 6.00pm | Evening Prayer (BCP) |
| 25th | 8.00am | Holy Communion (BCP) |
| | 10.00am | Morning Prayer |

Weekday Services: April

Wednesdays, 9.00am Morning Prayer (Online)
Thursdays, 9.00am Morning Prayer (Online)
Thursdays, 9.00pm Compline (said)

Subject to national, diocesan and PCC review, from Easter Day we are resuming services in church. If you wish to attend the Easter Day service, please let us know through the website. Sunday morning services are also being streamed on YouTube for those who wish to continue to worship remotely. You may tune in at <http://bit.ly/GirtonParishLive>.

The Taizé service is being held remotely using Zoom, usually on the first Sunday of each month. Anyone is welcome. Please email Kay Barrett at singing.kay@gmail.com and she will send the link to you in order to join in. Any problems, please do contact us via the website.

Please check the church website for up to date information at www.girton.church.

*O God, help us to feel your presence as we pray.
Help us to trust that as Jesus Christ, our Saviour,
is raised with you in glory, so too he is ever
present with us until the end of time.
(Leonine Sacramentary)*

Girton Baptist Church

Minister: Revd Nick Lowe
Tel: 01223 279289

Secretary: Mrs Virginia Rootham-Smith
Tel: 01223 520442
Website: www.girtonbaptistchurch.org.uk

Sunday Services: April

Sunday Morning Services 10.30am

All services will be on Zoom for the time being. All our welcome and please call 07751 748757 or email pastor@girtonbaptistchurch.org.uk for the joining details.

Easter services

Thursday 1st
7.00pm Maundy Thursday Communion
Girton Baptist Church and Zoom

Friday 2nd
10.30pm Good Friday
Girton Baptist Church and Zoom

4th **7.00pm** Easter Sunday
William Collyn Community Centre
and Zoom

For the link to join, please use the contact details above. Please use the church website for booking in-person.

An Easter Bible verse

He then began to teach them that the Son of Man must suffer many things and be rejected by the elders, the chief priests and the teachers of the law, and that he must be killed and after three days rise again. (Mark 8:31)

Some words from an Easter hymn

*Thine be the glory, risen conquering Son,
Endless is the victory thou o'er death hast won;
Angels in bright raiment rolled the stone away,
Kept the folded grave-clothes, where thy body lay.*

*Thine be the glory, risen conquering Son,
Endless is the victory thou o'er death hast won.*

A prayer for Lent

Lord God, You loved this world so much that you gave your one and only Son, that we might be called your children. Lord, help us to live in the gladness and grace of Easter Sunday, everyday. Let us have hearts of thankfulness for your sacrifice. Let us have eyes that look upon your grace and rejoice in our salvation. Help us to walk in that mighty grace and tell your good news to the world. All for your glory do we pray, Lord.

If you would like to discuss any Parish Council issues, please contact the following:

Chairman

Haydn Williams, 40 Church Lane, Tel: 474667
chairman@girton-cambs.org.uk

Vice-Chairman

Gill Cockley, 73 Cambridge Road, Tel: 276703

Councillors

Jane Buckler, 28 Girton Road, Tel: 277636
Julie Dashwood, 36 High Street, Tel: 276590
Douglas de Lacey, 9 Woodlands Park, Tel: 565219
Val Godby, 38 Woodlands Park, Tel: 276372
Andy Griffin, 298 Wellbrook Way, Tel: 07956 447674
Anne Kettle, 11 Redgate Road, Tel: 277505
Shahila Mitchell, 18 Northfield, Tel: 07519 265755
John Thorrold, 53 Cambridge Road, Tel: 276760
Mary Rodger, 11 Fairway, Tel: 277316

Formal correspondence to the Council should be addressed to the Clerk.

District Councillor

Tom Bygott, Tel: 232966
cldr@bygott.net

County Councillor

Lynda Harford, Tel: 01954 251775/07889 131022
lyndaharford@icloud.com

Parish Clerk and Acting Finance Officer

Susie Cumming, Tel: 472181
clerk@girton-cambs.org.uk

Assistant to the Parish Clerk

Laura Lawrence, Tel: 472182
admin@girton-cambs.org.uk

Website: www.girton-cambs.org.uk/council.html

Postal address

Girton Parish Council
The Pavilion
Girton Recreation Ground
Cambridge Road
Girton
Cambridge
CB3 0FH

Contact numbers for bookings

| | |
|---------------------------------|--------------|
| Cotton Hall | 07759 983420 |
| Orchard Close | 277164 |
| Pavilion | 472182 |
| St Vincent's Close | 276447 |
| William Collyn Community Centre | 279587 |

Obituary – Maureen Ryan

Former Girton resident Maureen Ryan has died aged 96 after a short illness. Maureen lived in Sterndale Close for many years and was well known in the village. She worshipped and volunteered at St Andrew's Church.

She also worked and volunteered for 50 years at Addenbrooke's Hospital and the Rosie Maternity Hospital. They had never given an award for 50 years service before!

Maureen was Youth & Juniors Director and Welfare Director for Cambridgeshire Branch Red Cross Society, running summer holiday camps for disabled children helped by Red Cross Cadets for many years.

Appointed Vice President of Cambridgeshire Red Cross Branch she was awarded the Badge of Honour and Life Membership of the British Red Cross Society in recognition of her devoted service in 1980.

Mobile Library

Thursday 22 April 2021

| | |
|--------------------|---------------|
| Thornton Court | 09.40 – 10.00 |
| Abbeyfield | 10.05 – 10.50 |
| Cotton Hall/Church | 11.00 – 11.30 |
| Orchard Close | 11.35 – 12.00 |
| St Vincent's Close | 12.05 – 12.30 |
| Gretton Court | 12.35 – 13.00 |
| Churchfield Court | 13.05 – 13.30 |

Rubbish Collection

People in Cambridge and South Cambridgeshire are being asked to make sure disposable face coverings and masks are put in their black wheelie bins at home, to help control the spread of Coronavirus.

The Greater Cambridge Shared Waste Service has already seen disposable PPE such as face coverings, masks and gloves in the blue recycling bins, despite none of these items being recyclable. With a rise in use expected over the coming weeks, waste bosses are urging people to keep caring by disposing of the items correctly, which will help ensure recycling is not contaminated, and control the spread of the virus.

Bin collections April

| | |
|--------------------------|----------------------------|
| Saturday 10 April | Blue and Green bins |
| Friday 16 April | Black bin |
| Thursday 22 April | Blue and Green bins |
| Thursday 29 April | Black bin |
| Friday 7 May | Blue and Green bins |

MOBILE HAIRDRESSER

ALL ASPECTS OF HAIRDRESSING DONE IN
THE COMFORT OF YOUR OWN HOME



CONTACT TANYA ON: 01954 211034
MOBILE: 07719 902450

MOTUS PHYSIOTHERAPY

SIMPLE AND EFFECTIVE

Chartered Physiotherapists | In Girton | Ample Free
Parking | Home visits | Accept Private Medical Insurance
and Self Funders

Online consultations via telephone, Skype or Face Time
available

01223 949405

W: www.motusphysiotherapy.co.uk
E: info@motusphysiotherapy.co.uk

Prime Time Fitness, Oakington Road, Girton, CB3 0QH

CAMBRIDGE CHAMOIS CREAM



- Award-winning 100% Natural Chamois Cream to ease chafing and cool the skin
- Handmade in Cambridge
- Suitable for both men and women
- Made with the highest quality and sustainable natural & organic ingredients
- Rich, concentrated formula - a little goes a long way!



WWW.CAMBRIDGECHAMOISCREAM.COM

• PAINT • DECORATE • DESIGN •

Full decorating and Painting service
Wallpaper removal
Design ideas and advice
Free estimates



Joanne Harmer
Telephone: 01223 277012
Mobile: 07787 068987
hello@joanneharmer.plus.com

Green Heat Limited

PHONE FOR A FREE NO OBLIGATION QUOTATION

01223 277278

Special Offer:

Free magnetic system
filter worth over
£200 with all new
boilers installed



**Smart new high efficiency 'A' rated condensing
boilers are over 90% efficient, and will provide
you with greater comfort, saving energy and
reducing fuel bills.**



Smart heating controls can add a further
4% efficiency and allows you to control
your heating from your smart phone or
tablet when away from your home. We
also have some great solutions to improve
hot water efficiency such as 'flue gas
heat recovery', enabling efficiencies of
nearly 100% to be achieved.

Call Green Heat now to arrange a free
visit and receive some expert advice
from qualified heating engineers with
over 50 years experience of providing
home comfort.

Green Heat Ltd



Green Heat Limited: 27 Fairway, Girton, Combs, CB3 0QF
info@greenheat.uk.com • www.greenheat.uk.com

Wendy's of Girton

Private Hire Taxi Service

Girton Town Charity Hospital
Scheme Provider
Taxi-card Vouchers Accepted

Short or Long Distance Travel

Local
Reliable Comfortable
Affordable

Phone: 528675
or 07815 057 202
Email: wb9wg@yahoo.co.uk

SafeSwitch

Electrical

ELECTRICIANS IN GIRTON

www.safeswitchelectrical.co.uk

City
Guilds
Qualified

01223 226106



**“The care my mother
has received has been
superb, thoughtful
and outstanding in
every way.”**

Daughter of Resident, Arlington Manor
Review excerpt taken from carehome.co.uk review 2020

**Providing exceptional relationship-centred
care for over two decades.**

Residents at Arlington Manor Care Home enjoy a sense of belonging and fulfilment by being part of a vibrant community. Relationship-centred care is at the heart of what we do; our team get to know each of our residents individually ensuring their care needs and lifestyle choices are tailored specifically to them.

Arlington Manor is a luxury, purpose-built care home in Gorton offering high standards of residential, nursing and dementia care.

Contact us today to book a tour on
01223 814 900 or visit **hallmarkcarehomes.co.uk**
for more information

 **arlington manor**
a hallmark care home

