



Cambridgeshire  
County Council

# Milton Household Recycling Centre consultation

**Proposals to expand and redevelop Milton Household  
Recycling Centre, Butt Lane, Milton**

Online public pre-application consultation from  
**9.00am on 15 June 2021 to 11.55pm on 28 June 2021**  
at [www.cambridgeshire.gov.uk/milton-HRC-consultation](http://www.cambridgeshire.gov.uk/milton-HRC-consultation)

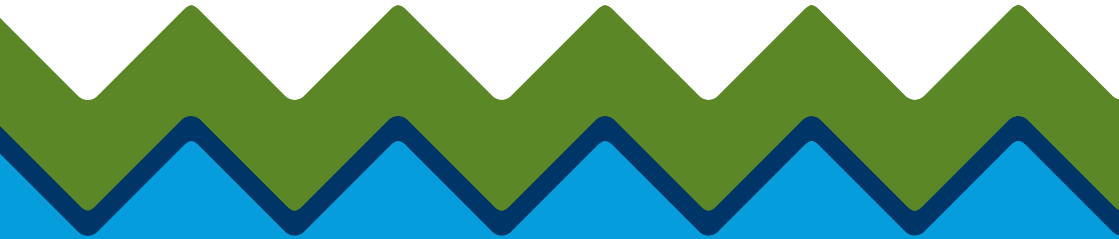




**Proposed layout  
(not to scale)**

Milton Household Recycling Centre serves residents in the north of Cambridge City and the nearby communities in South Cambridgeshire. Under the current planning consent, the site must close by 2026. The Waste Disposal Authority at Cambridgeshire County Council wishes to secure a long-term, permanent facility at Milton to serve existing and new residents of Cambridge City and South Cambridgeshire.

It is proposed to enhance and expand the existing facility to bring it up to modern day operational standards whilst also 'future proofing' the site to meet the needs of the local growing population.

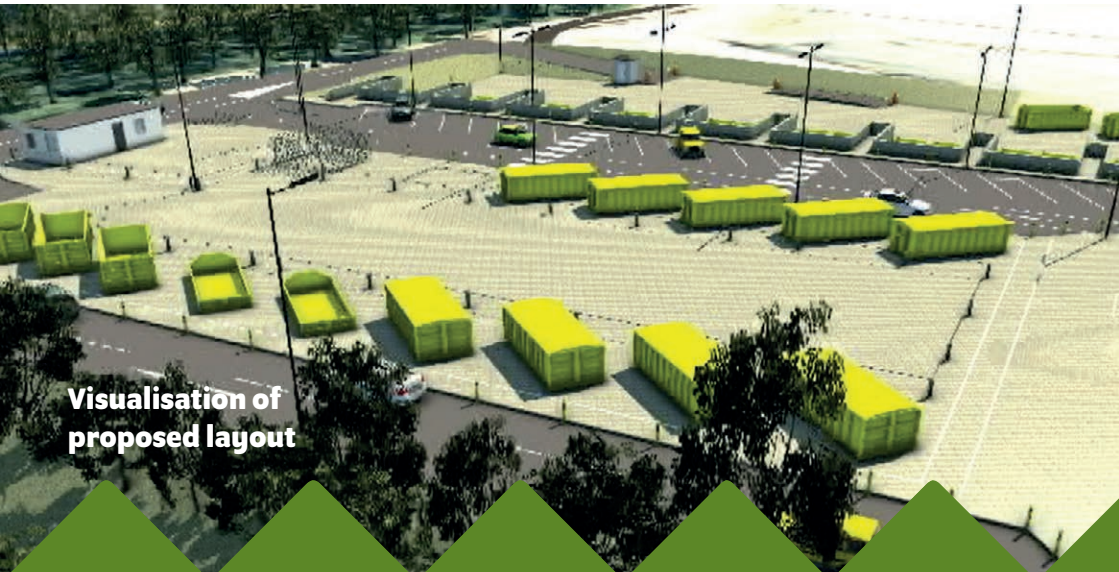


The new design seeks to:

- Futureproof the site to allow for anticipated population growth
- Manage traffic more efficiently on site, thereby reducing queuing into the site
- Construct a split-level facility to enable residents to dispose of their waste without the need to climb steps
- Better separate public and operational traffic, further increasing the safe operation of the site
- Provide an undercover reuse shop
- Include access and parking for cyclists

The following will remain **unchanged**:

- Existing opening hours
- Access to the site will remain via the existing access off Butt Lane
- Mature, established landscaping around the eastern and northern perimeters of the site will remain intact
- There will be no changes to the way in which waste material is managed on site and no processing of waste
- Continued use and adaptation of site security system (including CCTV) and outside lighting at the site



**Visualisation of  
proposed layout**



## Environmental impacts

In developing our proposals for Milton Household Recycling Centre, we have carefully considered any impacts on the environment, including:



**Landscape and visual**



**Ecology**



**Water environment**



**Transport**



**Air quality**



**Green belt**



**Noise**

## Having your say

Your feedback is important to us and will help shape our final proposals .

Due to current social distancing restrictions we have created an online virtual exhibition where you can review our proposals, put questions to our team and provide your feedback. Go to **[www.cambridgeshire.gov.uk/milton-HRC-consultation](http://www.cambridgeshire.gov.uk/milton-HRC-consultation)** or scan the QR code for our questionnaire.



Alternatively, you can contact us by emailing us at **[consultation@miltonhrc.info](mailto:consultation@miltonhrc.info)** or via our freephone number **0800 156 0114**. If you are having difficulties accessing the online materials, please call us on the freephone number provided. Wood Group UK Ltd have been commissioned to conduct the public consultation on Milton Household Recycling Centre.

**The deadline for responding is 11.55pm on the 28 June 2021.**

## Next Steps

After reviewing all feedback from the local community, as well as from statutory stakeholders and regulators, we will finalise our plans, ahead of submitting our planning application to the Council's Planning Team in late summer 2021.

Cambridgeshire County Council as the Local Planning Authority will also invite comments from local residents and community groups before making its decision.