



Re:port

CONNECT WITH YOUR RESIDENTS TODAY



Gideon Barazovsky

Empowering Residents With Efficient Processed

- **Streamlined Workflow:** Automates and simplifies the issue resolution process, from submission to closure.
- **Enhanced Communication:** Features improve dialogue from residents, and raises awareness for council.
- **Easy Adoption:** Simple design and functionality to support adoption among community.
- **Increased Productivity:** Supported by phone app to ease tasking and response times.

How Does it Work?



WE WANT TO KNOW

Introducing a new service for our residents. From today you can tell us about any issues you find in the village in a simple way, and we will do the rest!

Something we need to know?
Head to <https://girton.municipal.report/>



Powered by Re:Port



Girton Parish - Create Issue

Category*:

Select Category ▼

Subject*:

Issue location*:

Enter Issue nearest address

Issue Description*:

Your Name:

Your Email:

Your Phone Number:

Format: 01234567890

* I have read and agree to the [Privacy Policy](#)

Create Issue

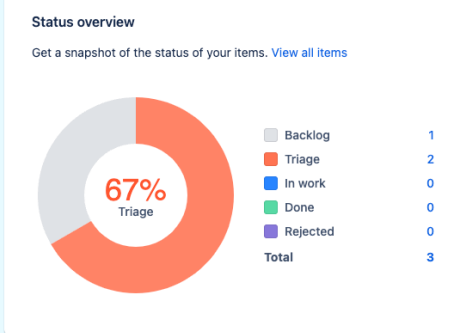
Search board



Share Filter

Board view showing columns: TRIAGE 0, IN WORK 0, REJECTED 0, BACKLOG 1. A card in the BACKLOG column is titled "Bus shelter on Mayfield Road" with a checked checkbox for "GPC-50".

Summary statistics: 0 done in the last 7 days, 3 updated in the last 7 days, 2 created in the last 7 days, 0 due in the next 7 days.



Recent activity

Stay up to date with what's happening across the project.

TODAY

- Municipal Report updated 5 fields of **GPC-85 - Community Garden Project at St Vincents Close Community Centre** about 2 hours ago
 - Updated the Phone Number
 - Updated the Email Address
 - Updated the Name
 - Updated the GPC Category
 - Updated the Location
- Municipal Report changed the Assignee to 'Municipal Report' on **GPC-85 - Community Garden Project at St Vincents Close Community Centre**



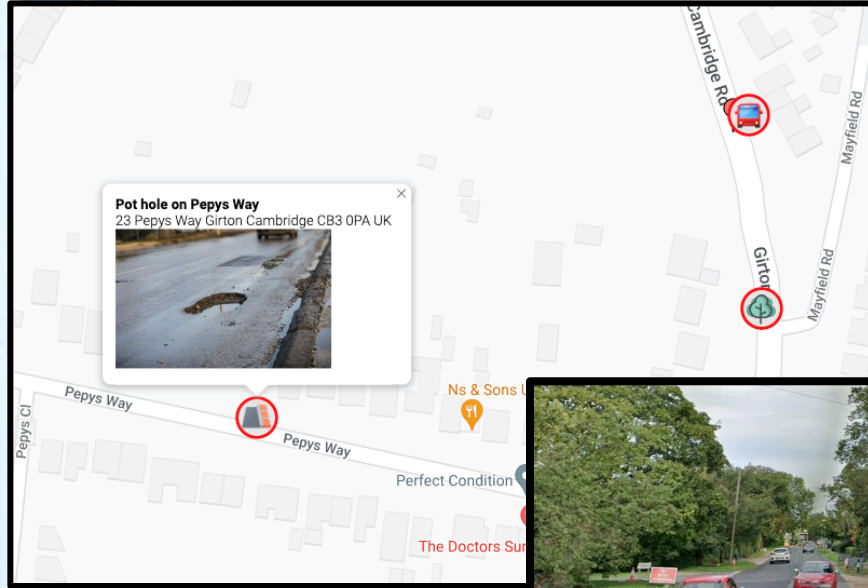
Types of work

Get a breakdown of items by their types. [View all items](#)

Type	Distribution	Count
<input checked="" type="checkbox"/> Issue	100%	3
<input checked="" type="checkbox"/> Task	0%	0
<input type="checkbox"/> Sub-task	0%	0
<input type="checkbox"/> Manage types		

What's Next?

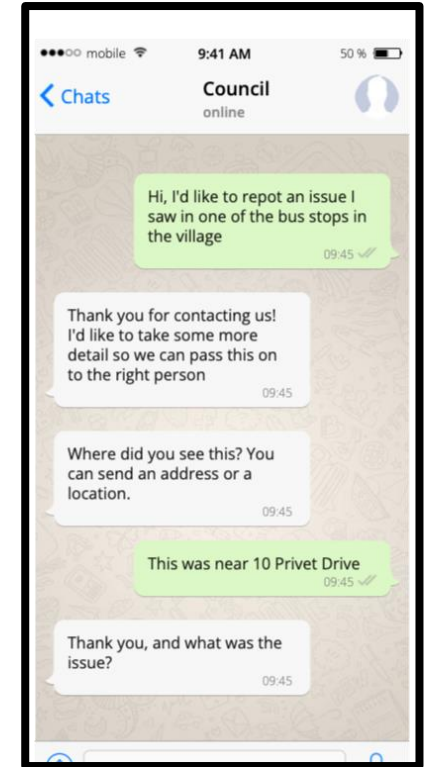
Map User Interface



Google Maps
Street View Integration



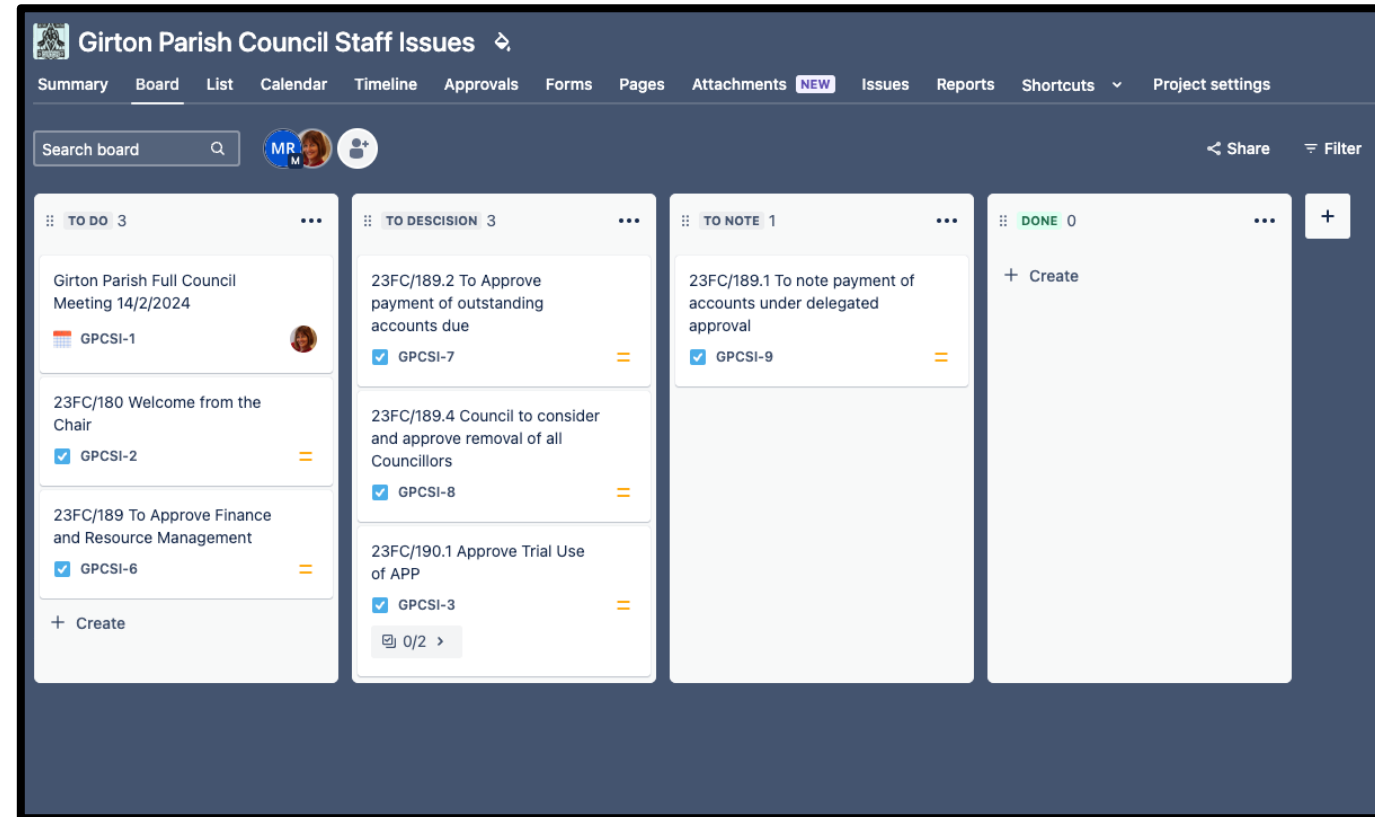
E2E Comms
and Feedback



WhatsApp Bot

What's Next?

Data Led Decision Making



Manage Meeting and Notes
Capture Valuable data



Questions?

