

GIRTON PARISH COUNCIL

Clerk: Mrs. Yvonne Murray
Telephone (01223) 618619
Email: Clerk@girton-pc.gov.uk
Website: <https://www.girton-cambs.org.uk>

The Pavilion
Girton Recreation Ground
Cambridge Road, Girton
Cambridge, CB3 0FH

NOTICE of MEETING: GIRTON PARISH COUNCIL
MEETING FULL COUNCIL
DATE & TIME: Thursday 11th July 2024 at 7pm
VENUE: Girton Recreation Ground, Cambridge Road Girton

All Members of the Council are hereby summoned to attend for the purposes of resolving Council Business to be transacted at the meeting, as set out below. Members of the public and press are invited to address the Council under the Public Participation item. Advance notice of questions and/or issues would be appreciated.

Members: 12 Vacancies: 3 Quorum: 5

Members: Cllr Carney (Chair), Cllr Muston (Vice-Chair), Cllr Bajpai, Cllr Brown, Cllr Clare, Cllr Crawley, Cllr Hayat, Cllr Lampe, Cllr Linton, Cllr Marshall, Cllr Reeves, Cllr Wright.

Mrs. Yvonne Murray – Clerk to Girton Parish Council
7th July 2024

Y J Murray

AGENDA

Agenda Item	Item Description	Action/ Power
24FC/057	Welcome from the Chair	
24FC/058	To Receive Apologies and Reasons for Absence	For Decision
24FC/059	To Receive Members' Declarations of Interest and Dispensations	To Note
24FC/060	Public Participation <i>To allow a total of 15 minutes for any members of the public to address the meeting in relation to any matter on the agenda. Individual presentations to be limited to 5 minutes on any single issue</i>	15 Mins
24FC/061	To Receive Reports <i>(for information only)</i>	10 Mins
24FC/061.1	County Councillor	
24FC/061.2	District Councillors	
24FC/061.3	Girton Town Charity (No Report this month)	
24FC/061.4	Girton Neighbourhood Plan	
24FC/061.5	Clerk's Report	
24FC/061.6	Chair's Report	
24FC/062	To Approve Minutes of Girton Parish Council Full Council Meetings: 26 th June 2024, 12 th June 2024, 30 th May 2024 (Annual Meeting), 10 th April 2024	For Decision
24FC/063	To Note Minutes of Annual Parish Meeting held on 15 th May 2024	To Note
24FC/064	Matters arising from Previous Meetings <i>(for information only)</i>	To Note

Agenda Item	Item Description	Action/ Power
24FC/064.1	Action List	
24FC/064.2	Any other Matters arising – A chance to raise any comments/concerns on previous agenda items	
24FC/065	To Receive update from GPC Committees & Working Groups <i>(For information only)</i>	To Note
24FC/065.1	Environment Committee	
24FC/065.2	Local Nature Recovery Working Group	
24FC/065.3	Footpath Officer's Report	
24FC/065.4	Water Management Report	
24FC/065.5	Finance & Resource Management Committee	
24FC/065.6	HR Committee (to include CAPALC Report)	
24FC/065.7	Planning Committee	
24FC/065.8	Sport & Recreation Committee	
24FC/065.9	Events Working Group	
24FC/065.10	Wellbrook Way Facilities Task & Finish Group	
24FC/065.11	Pavilion Refurbishment Task & Finish Group	
24FC/066	To Approve Finance and Resource Management	For Decision
24FC/066.1	To note payment of accounts under delegated approval	To Note
24FC/066.2	To Approve payment of outstanding accounts due	For Decision
24FC/066.3	To Receive a report from Facilities Manager on Amounts paid in	To Note
24FC/066.4	To consider and approve first invoice from Wilby & Burnett (Master Planners)	For Decision
24FC/066.5	This council resolves that regardless of whether a committee of the council or working group appointed by the council, all members of these committees / working groups follow GPC's guidelines and code of conduct in the same manner that councillors are held to account. This includes disclosing conflicts of interest.	For Decision
24FC/066.6	For any committee, working group, club or society that receives a budget, grant or other financial support of money from the GPC precept and/or reserves is expected to: a) remain within the agreed budget/grant/support for the financial year and understand that no further funds will be forthcoming b) apply due diligence when spending public money and wherever possible, obtain three quotes endeavouring to be open and transparent in the reasons why money has been allocated.	For Decision
24FC/066.7	Council to review and approve current status of LNRP & Wellbrook Way budgets.	For Decision
24FC/066.8	Council to approve delegation of August Payment approvals to Chair, Vice Chair with oversight from GPC Clerk.	For Decision
24FC/066.9	Council to consider and approve payment of items approved in 2023/2024 budget at any time as procured by Committees, Working Group or Task & Finish Group. <i>Notes:</i> <i>All these items will be noted in payment schedule of next Full Council.</i> <i>All groups to notify Clerk/RFO and Finance Chair of payments made.</i> <i>Any items that exceed the budget or where changes are required to items should be approved at the earliest committee or Full Council.</i>	For Decision

Agenda Item	Item Description	Action/ Power
24FC/066.10	Council to approve provision of first draft of 2025/26 three-year budget plan by September 18 th so that a more detailed precept survey for all spend can be provided for November Girton Parish News	For Decision
24FC/067	Business items requiring a decision, or consideration by the Council	For Decision
24FC/067.1	Council to note progress of Wilby & Burnett project and timetable for completion of approved work.	For Decision
24FC/067.2	<p>Council to consider and approve the following items for Girton Feast including a budget of up to £200.00 for Feast and Summer Holiday consultation resources including:</p> <p>a) Approval of initiating following community engagement groups and the set-up of communication channel in WhatsApp:</p> <ul style="list-style-type: none"> • Active Travel • Buses • Speedwatch Group <p>b) Initiating a Girton Parish Council Newsletter for weekly Council news</p> <p>c) Community survey on the recommendations of Wilby & Burnett</p>	For Decision
24FC/067.3	Council to consider and approve recommended quote of Electrical Survey by Wilby & Burnett	For Decision
24FC/067.4	Council to consider and approve completion of maintenance work highlighted by Wilby & Burnett which can be completed by GPC Parish Ranger.	For Decision
24FC/067.5	<p>Council to consider and approve formation of a Community Building working group so that GPC can begin to carry out the recommendations of Wilby & Burnett to consider ways these organisations can work together. Initial members to be invited to the Group:</p> <ul style="list-style-type: none"> • Cotton Hall • Girton Golf Club • The George • Girton Social Club Trustees • Girton Social Club Tenants • Girton Town Charity/WCCC • FOGG (Girton Glebe) 	For Decision
24FC/067.6	Council to consider and approve 'Pavements are for People' proposal	For Decision
24FC/067.7	Council to consider and approve Tree-work quotes provided by Richardson's (as per Agenda pack)	For Decision
24FC/067.8	Council to consider and approve official opening of Wellbrook Way Clubhouse to be held on 28 th July 2024 to be hosted by Girton Bowls Club ahead of the President's event.	For Decision
24FC/067.9	Council to consider and approve a commitment to review and comment on policy and procedure that will be worked on by GPC Clerk and other Councillors over the summer break for approval in September 18 th Full Council.	For Decision

Agenda Item	Item Description	Action/ Power
24FC/67.10	<p>As GPC begins to work on increasing amounts of new projects and Asset Management Council to consider and approve respect for Council's policy, procedure and prioritization and tasks as below:</p> <p>This motion aims to acknowledge and respect:</p> <ul style="list-style-type: none"> - The position of everyone working for and in Girton Parish Council. - Understanding the necessity of following due process and capacity available. - Ensuring that all matters are handled equitably. <p>Resolved, that this Council hereby affirms:</p> <ol style="list-style-type: none"> 1. All members of committees and working groups must adhere to the procedural framework agreed by the Council, which outlines the proper channels and protocols for administrative support. 2. The role of the Clerk is to serve as the chief administrative officer and ensure the smooth operation of the Council's activities and their input should be heard and acknowledged. 3. Requests for support will be addressed in a manner consistent with the Council's priorities and the Clerk's workload. 4. Council's resources will aim to provide an equitable distribution of support for all residents and council groups dependent on available capacity. 5. This motion calls for more understanding and acknowledgement of the substantial workload and respect for the time and governance required to complete procedures that appear straightforward to ensure fairness and efficiency in administrative tasks and distribution of funds. 6. Based on 5 above, groups should be aware that Council support for specific village projects will be provided in line with council priorities recognizing that other groups may now require attention. 	
24FC/067.11	Council to note spend of £318.00 for sign for Basketball Courts	To Note
24FC/068	<p>To Receive Correspondence addressed to the Council.</p> <p>Items regarding:</p> <ul style="list-style-type: none"> - Tree & Hedge work: Woodlands Park - Woody Green Access - Grass Cutting 	To Note
24FC/069	<p>To Approve Communication of items from this Agenda</p> <p><i>This item is designed to ensure that Council can approve key items of communication from this meeting on Council Website, Facebook, and X (formerly known as Twitter).</i></p>	For Decision
24FC/070	Date of next meeting(s): To be confirmed	To Note

District Councillors: Corinne Garvie 07780 932267, cllr.garvie@scambs.gov.uk
Richard Stobart 07950 934793, cllr.stobart@scambs.gov.uk
County Councillor: Edna Murphy edna.murphy@cambridgeshire.gov.uk

Simpler Recycling

Changes to waste laws will be in place from 31st March 2025 meaning everyone recycles the same materials wherever they live or work across the country.

The team at Greater Cambridge Shared Waste Commercial are passionate about recycling and can help you cut the waste you produce, saving you money too.

Their fleet of fuel-efficient vehicles includes an electric bin lorry, further reducing emissions and noise. All trucks are being fitted with measuring equipment to comply with the new regulations.

The team can help with skips, bulky collections, and ordering sacks or more bins. Contact them for more information.

Energy efficiency support for VCSE organisations

Voluntary, community and social enterprise (VCSE) organisations are encouraged to apply as soon as possible to the VCSE Energy Efficiency Scheme for support to improve their energy efficiency.

The support includes an independent energy assessment and then capital grants to install energy efficiency measures.

The energy assessment part of the scheme closes on 20 June 2024 and the application period for capital funding is open until 14 August Webinar: <https://shorturl.at/X24IS>

How to do business with SCDC

Want to know how to win work with local authorities? On 25 July 2024 our Procurement Officer will be hosting a free webinar explaining how to write successful bids - and how not to.

Sign up for this practical, interactive online session and learn: how to find open tenders, how to sell to local government, using the right language and avoiding getting it wrong, what is social value and why is it important?

Apply for your free place : <https://tinyurl.com/5eb4eb6w>

ICT - Information and Computers Technology - Review

As the five-year partnership agreement with Hunts DC and Cambridge City anniversary approaches, the Council are reviewing their 3C shared services. The ICT review is probably the most significant piece of work, and they have commissioned consultants to support it. A key element of the review is getting feedback from users, and we'd therefore be really grateful if you could take 10 minutes to respond, by clicking on the link here: <https://www.surveymonkey.com/r/SCDCICTMembersurvey>. The survey will close on Friday 28 June

Fens Reservoir Consultation

The public consultation for the proposed reservoir in the Fens is open and will run until 9 August 2024. It focusses on the following areas:

- The emerging design for the main reservoir site. This shows opportunities for recreation, wildlife, nature and other features.
- The early stage proposals for areas of land in the vicinity of the main reservoir site which could be used for environmental mitigation and enhancement, construction, and wider uses.

- The proposals for the associated water infrastructure is needed to transfer water from its sources to the reservoir, treat the water, and supply it to homes and businesses.

A range of consultation materials have been published on the project website, www.fensreservoir.co.uk

Business Support's Youth Engagement Programme

Together with Cambridge City Council, we have launched two programmes of work to support market traders. These are being funded by the Government's UK Shared Prosperity Fund, which is being administered locally by the Cambridgeshire and Peterborough Combined Authority.

20 traders in South Cambridgeshire will be able to access advice and support to enhance their current business operations, and may be eligible to apply for £1,000, grants to help develop their business.

Meanwhile, a Youth Enterprise Support Programme will support young people who want to start their own business, to get started. The programme will work with young individuals aged 16-25 to develop essential skills, knowledge and will include opportunities to gain real market experience. Candidates will also have the opportunity to apply for £1,000 grants to transform their business ideas into local market ventures.

Young people who are interested in the Youth Enterprise Support Programme can register to start their journey from conception to commerce at <https://nxgconnect.co.uk/youth-enterprise-programme/>

If you have any queries on either scheme, please contact Business Support Key Projects Team Leader Katherine Southwood on Katherine.Southwood@scamb.gov.uk

Tiger Bus Scheme

Anyone under the age of 25 can now apply for a Discount Card which entitles them to travel anywhere within Cambridgeshire for £1. Obviously you need to be able to get on a bus to do this but the Mayoral Led Combined Authority is developing the business case for 'bus franchising' which will mean control for the bus service rests with the Combined Authority rather than with the bus operators. Had a congestion charge for Cambridge been approved there would have been an additional £50 million per year to subsidise rural services but since that is not the case we are unlikely to see all of our villages connected by bus. What we hope is that some key services will run more often and at more suitable times to cater for children getting to school and people getting to work.

Community Vegetable Gardens

South Cambs District Council is awarding small grants of up to £500 to community groups to grow vegetables. Details of the simple application process are on the website. The Community Growing grants will enable local groups to buy equipment and tools to help start a Community Growing Project. It is envisaged that funding will be spent on items such as raised beds, seeds, soil, and gardening equipment. Anyone can apply for this grant, as long as they are able to demonstrate they have brought a group together to look after the project!

Quality of Life Survey

Cambridgeshire County Council has launched the second annual countywide Quality of Life survey, speaking to a random sample of 5,500 residents to understand their views on the quality of their lives. The survey – run by an independent market research company Thinks Insight – aims to speak to 1,100 people aged 18+ living in each of the five Cambridgeshire district areas. In addition, they will be talking to people from specific groups who are less often heard from including people who may have been homeless or are from migrant or Gypsy/Roma/Traveller communities. The online version of the survey can be found on the website.

Five year land supply

Souths Cambs has published the most recent Greater Cambridge housing trajectory with housing land supply calculations. This is important as without it a lot of protective planning policies fall away as happened in the years to 2018. In any event, the trajectory - which shows anticipated delivery of new homes across Cambridge and South Cambridgeshire up to 2041 - demonstrates that jointly for Greater Cambridge there are 6.5 years of housing land supply for the 2024-2029 period.

Visit South Cambs

Our website for the local tourism, hospitality, leisure and independent retail sectors offers businesses and event organisers a free listing on the site, which is seen by nearly 2,000 visitors worldwide each month. If you would like a free listing for your events, or know any businesses or organisers who would, please use this link to fill in the submission form or email visit@scambs.gov.uk

Community Cooking Programmes

South Cambridgeshire District Council, in partnership with Let's Cook Project, are delivering FREE sessions, aiming to support residents of South Cambridgeshire to improve their confidence and knowledge in healthy eating and cooking. We are looking to deliver 4 cohorts across the district, and we offer 2 different programs for adults and families. All equipment and ingredients will be provided.

For more info please contact Emma Jarvis emma.jarvis@letscookproject.org

Police want to hear from you!

Cambridgeshire Police is undertaking community engagement events with the next on Wednesday 28 August at 7pm. You can register now to receive the meeting link and more details of both the engagement event on the Police website.

Have you considered being a Special Constable?

Cambs Police have just launched a recruitment drive for Special constables - Specials have all the powers of a police officer and work alongside their regular colleagues. It only requires a minimum commitment of four hours a week and is a great opportunity to give something back to your community, while receiving professional training, skills and experience that can be used in everyday life and career progression. Over the past 12 months, Specials have racked up more than 23,000 hours on the job, launched an impressive 400 investigations and stopped 1300 vehicles. If you, or someone you know, would like to find out more about becoming a Special, and maybe even apply, please visit the Police website pages.

Your Councillors are here to help you. Please do feel free to contact us with comments, questions, problems or complaints. We hope we can help but if we can't we are likely to know someone who can!

Corinne Garvie

Edna Murphy

Richard Stobart

7th July 2024

Girton Parish Council

Clerk's Report

July 2024 Full Council

As I write the report for this Full Council, two things strike me about the role of Clerk and the role of Parish Councils.

1. More than any job I have had the role is primarily about people. A wide variety of people who care passionately about the place in which they live. The scope of the role is challenging, exciting and at some points the diversity is absolutely ridiculous.
2. The role then becomes almost impossible when you are working with many stakeholders groups whose processes, priorities and perspectives are very different. In addition, for many valid reasons there is no end-to-end communication in place. This creates what is called a *bullwhip effect* where the amount of work and often importantly the amount of time to nail delivery is way more than it should be.

A great example would be Tree works. It is often the case that there is no certainty as to who owns the land. So the starting point of action is not just to book a Tree surgeon and get three quotes but to begin the an often long drawn out investigation into who might be responsible for this particular tree. Even beginning to act is then difficult as the responsible party is not known. **Add to that** the fact that local government's (SCDC, CCC) scope is off the scale with even greater challenges of prioritising. This can then cause you to grind to a halt on this piece of work. You will see this area will be covered in *Agenda Item 24FC/068* which looks at correspondence received from residents over the last month.

The need for good data, communication and collaboration for all local government has never been more important so that these tasks can be moved to become routine. This is likely only possible when data and end to end communications inform these tasks. We have some of the most committed people I have ever met at Parish, District and County level, that support would revolutionise their roles. If information from our local community could work alongside (as many local parishes did during COVID including Girton) and the possibility to do great things proactively is in place.

Our five Feast Stalls this year for Girton Parish Council, South Cambridgeshire District Council and our associated groups of Local Nature Recovery Plan and Neighbourhood Plan give us the opportunity to talk to all residents about our work in the villages together with the opportunities and challenges that we face. It also gives you as a community a chance to get involved in areas that matter to you and in which you have a passion. Please join us at the Feast and view our Community Engagement Gallery in Girton Pavilion Recreation Ground to reflect on how you might like to get involved..

Agenda Item 24FC/067.2 that GPC is considering making Girton Parish Council team available over the summer so that you have more time to consider the potential for GPC's next steps. We are pleased to welcome to our Feast Stall's this year Lianne Toothill, our master planner who will be with us for much of the afternoon to present her findings so far. Lianne has adopted a community approach from the beginning of this planning exercise. She has now carried out 28 interviews with local groups including visiting Girton Glebe Assembly and a zoom call with 13 Impington Village College students. She was with us for our Annual Parish Meeting, and we thank her for spending some of her weekend at our village Feast.

Daniel, our GPC Chair has highlighted a lot of information has been collated for 'Girton's Great Plan' and the identification for 'quick wins' is highlighted in Agenda Item 24FC/067.4. This will allow work if approved to continue over Summer 2024 as GPC takes a well-deserved break from meetings in August. Our Agenda puts in place delegations for August to allow business as usual to continue.

You will see in Girton Parish News, the advertisement for a permanent Parish Ranger. Our current parish Ranger Kevin Jacobs has been working carrying out work on the gates to Girton Recreation ground and also the benches around our Rec which we hope will be useful and interesting as you bring you families to our Rec. for the Village Feast. It was interesting to watch a pram enter the playground over the weekend with little effort due to the new surfaces in place under the gates.

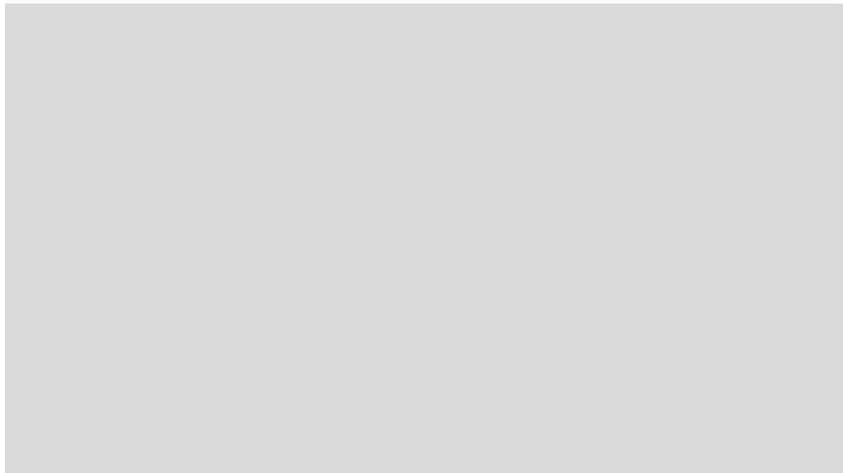
As we completed the much-needed refurbishment of our benches we were amazed to see how almost immediately we saw more people using them. Thank you to all Ron Lipscombe's family, to the family of Dorothy Horner and Irene and to the family of David Morrissey who have asked to donate to the upkeep of our/their benches provided to remember their relatives. Thank you to all of you for helping Girton Parish Council to unearth some really interesting social history around the Benches. For Girton Feast 2024 we will be putting some detailed information on our memorial benches. Please do take some time at the Feast to visit our benches. You will see there is the opportunity to get involved in the upkeep of all of Girton's Benches from our June Full Council Minutes.

Kevin has changed his hours this month so that he can be available to support the work needed behind the scenes for Girton Feast and to do some needed work to make our villages ready ahead of the school summer holidays. He will be fixing the Wellbrook Way roundabout and finalising work on all the benches on the Recreation Ground.

Girton Parish Council hope you feel able to get involved in some of the work we are doing to help us move more quickly and to make a more significant impact for the village. We look forward to meeting you at the Feast and answering any questions you may have. Please do visit our Annual Calendar on Girton Village website and take a look at your copy of Girton Village Celebrations Calendar for dates of Parish Meetings. Everyone is welcome at our Parish Meetings, and we continue to make them productive and fun! It is worth attending just to see how that challenge is being met.

Yvonne Murray
Girton Parish Clerk

Girton Recreation Ground Benches – One example of our refurbished Benches



Girton Parish Council

Chair's Report – July 2024

Cllr Daniel Carney

Full Council meetings seem to have been coming thick and fast, and I realise that I have not yet taken the opportunity to thank my fellow Councillors for electing me as Chair of the Parish Council for 2024-25. I hope that I have been able to serve the village well over the previous 12 months and that I will also be able to do so for this new period. I must also extend congratulations to Cllr Muston for being re-elected as Vice-Chair. Her tireless work in her role as a councillor is commendable.

This year's Annual Governance and Accountability Return (AGAR) was another year-on-year improvement. That the internal audit was passed with minimal issue is a testament to the diligence and hard work of the parish council staff, in particular our Responsible Financial Officer, Yvonne Murray.

The first meeting between the Master Planner and a good range of representatives of village organisations was highly informative. Planner Leanne Toothill has taken a lot of information on board from a range of viewpoints and is already formulating some very interesting ideas. There are a significant number of steps to go through, but I am hopeful that there can be some "quick wins" identified that we can start to progress with in the knowledge that they have been considered as part of a whole and thus are unlikely to impact or restrict future potential actions.

I would like to extend a word of thanks and congratulations to Reverend Michael Bigg, and members of the St Andrews Church congregation, for hosting an excellent hustings ahead of the General Election. It was standing room only for the event, and it was gratifying to see so many residents keen to engage with the election. I would like to thank all seven candidates for taking part in the hustings, and taking part in a robust but respectful exchange of views. Thanks to all the volunteers with their work collecting and distributing questions and polls, and to Rev Bigg for being an excellent chair.

This month I have spent some time catching up on assessing the footpaths and Rights Of Way across Girton, something which I have let slip somewhat. I believe that we now have an up-to-date picture of the state of these at the present time, and I will be pushing to act on some of the recommendations included as soon as possible. I have also spent this time trying to plant the seeds for ideas that I perhaps only alluded to in the AGM report, namely trying ways of enabling residents to be empowered to organise and push for action on areas in the village that regularly come up as issues in feedback, namely active travel, buses, and speeding. I hope that, with initial publicity that could start at Girton Feast, the Parish Council could facilitate resident groups to form, mobilise, and demonstrate where there is well-supported public need for action in these areas and beyond.

Report on possible biodiversity enhancements at Wellbrook Way - July 2024

Context

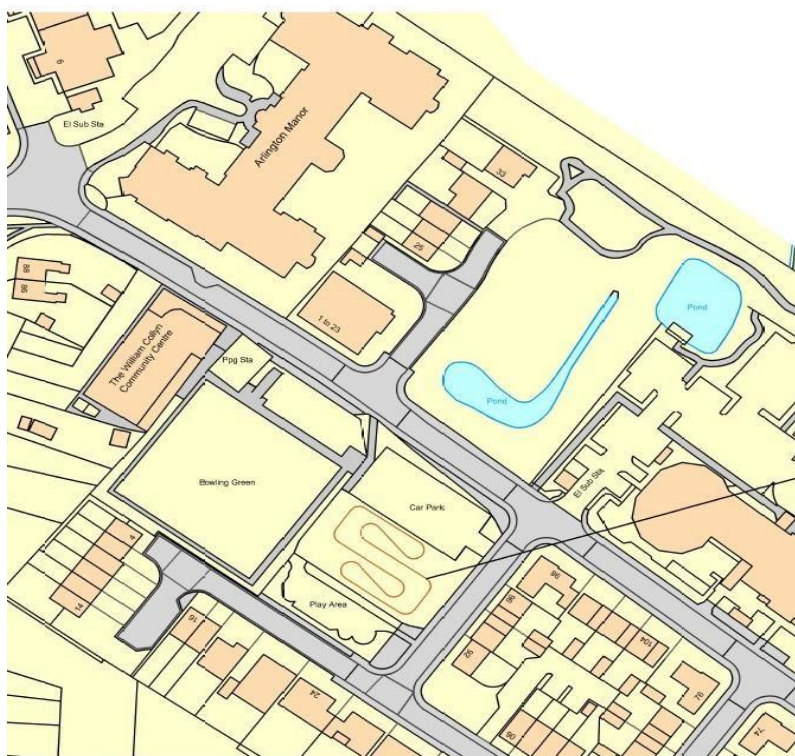
During the exercise to identify key sites of biodiversity value for the 1st version of the Local Nature Recovery Plan in 2023, Wellbrook Way was noted as a site of interest.

The 'Context, Aims and Objectives' Document published in October 2023 noted the following: 'Several habitats are present and were added during construction of the houses. A scrub-lined path runs along the northern edge of the site and connects two meadow areas which both contain ponds. Some mature trees along the scrub belt show that it is an old field boundary, predating the development. At the south-eastern end of the estate is a woodland which has developed naturally in the last century, this shades a shallow stream which is always in flow running along the fenceline with Thorton Way.' (see pg. 11)

The first edition of the Plan itself (also dated October 2023 and signed off by the Parish Council in November 2023) notes the intention to 'To investigate how to reinstate the two ponds for amphibians, engaging with all stakeholders within the estate.' during our Planning Year 24/25 (which runs from October to September).

With this in mind the Group arranged for a preliminary survey site visit on Friday 26th June. This has been followed up by a number of subsequent site visits, including one in the company of Helen Bailey, Land Advisor at the BCN Wildlife Trust. This is a summary of our findings and thoughts on possible management measures for the site.

Site 1 – Ponds Area



We started our survey at the area between Nos 1-32 Welbrook Way and the Arlington Manor Care home complex.

This area has also been identified as a potential 'nature area' as part of the 'Great Plan' exercise for the Parish Council by Wilby and Burnett.

An immediate issue is that the pond nearest the road is densely overgrown with vegetation.

The 'Pond' is only accessible from a steep slope, which would need addressing if the area was to be opened up.

Even in its overgrown state, the pond will have some biodiversity significance. But for community utility and to improve biodiversity the pond does require digging out to restore the water level.

The Wildlife Trust has access to funding for pond restoration and maintenance, primarily in support

of
Fig 1: Map showing Site 1 – 'Ponds area' (courtesy Wilby & the Great Crested Newt. Helen Bailey, Land Advisor at



Image 1: View of the 'Ponds area' from Wellbrook Way

The surrounding area is covered by Himalayan bramble which, though it has some wildlife value could be removed. This is a job for a contractor as the area would need scraping once the bramble is removed.

If the intention is to open up community access then a path could be laid around the area (at present a path runs alongside the eastern and northern edge of the area). Because of the aforementioned steep bank down to the pond, the pond itself would need to be fenced and a safety ring provided too. Once a path was laid, two or more benches could be installed, overlooking the pond. An Interpretation Board would add to the educational value of the space

In the centre of the area is a bank that used to be a meadow area when the complex was first developed. Again it is covered by Himalayan Bramble. Scraping this back and sowing a wildflower mix could restore it and provide more attraction for pollinators such as bees and butterflies.

Further along this path there is a group of Willows that would benefit from some maintenance. We would recommend them being coppiced on rotation - a third of the trees every three years.

The second pond still has water in it but is almost inaccessible due to the thick vegetation surrounding it. As a pond it will undoubtedly have biodiversity significance. With community access to the first (larger) pond, our recommendation is that this pond is left undisturbed as a habitat for wildlife.



Image 2: View from eastern footpath showing 'Meadow mound'

Summary of Recommendations for Area 1 – Ponds Area

- 1. Apply to BCN Wildlife Trust for funding and maintenance work on Pond 1**
- 2. Dig out Pond 1 to restore water levels**
- 3. Remove Bramble and scrape back surface**
- 4. Complete path 'loop' to run along western and southern side (to join existing path)**
- 5. Install benches and an Interpretation Board to enhance community utility**
- 6. Fence Pond 1 and install safety lifebelt for Health and Safety requirements**
- 7. Reestablish 'meadow mound' in centre of site**
- 8. Coppice willows on eastern path on a 1/3rd every 3-year rotation cycle**
- 9. Leave Pond 2 untouched as a nature area**

Site 2 – 'Northern Boundary Path'

This is the 'scrub lined' path referred to in our Plan documentation that runs behind the Arlington Manor Care Home and dwelling nos. 219 to 159. It ends at a woodland/meadow area in the south eastern corner of Wellbrook Way to be discussed as 'Site 3'.

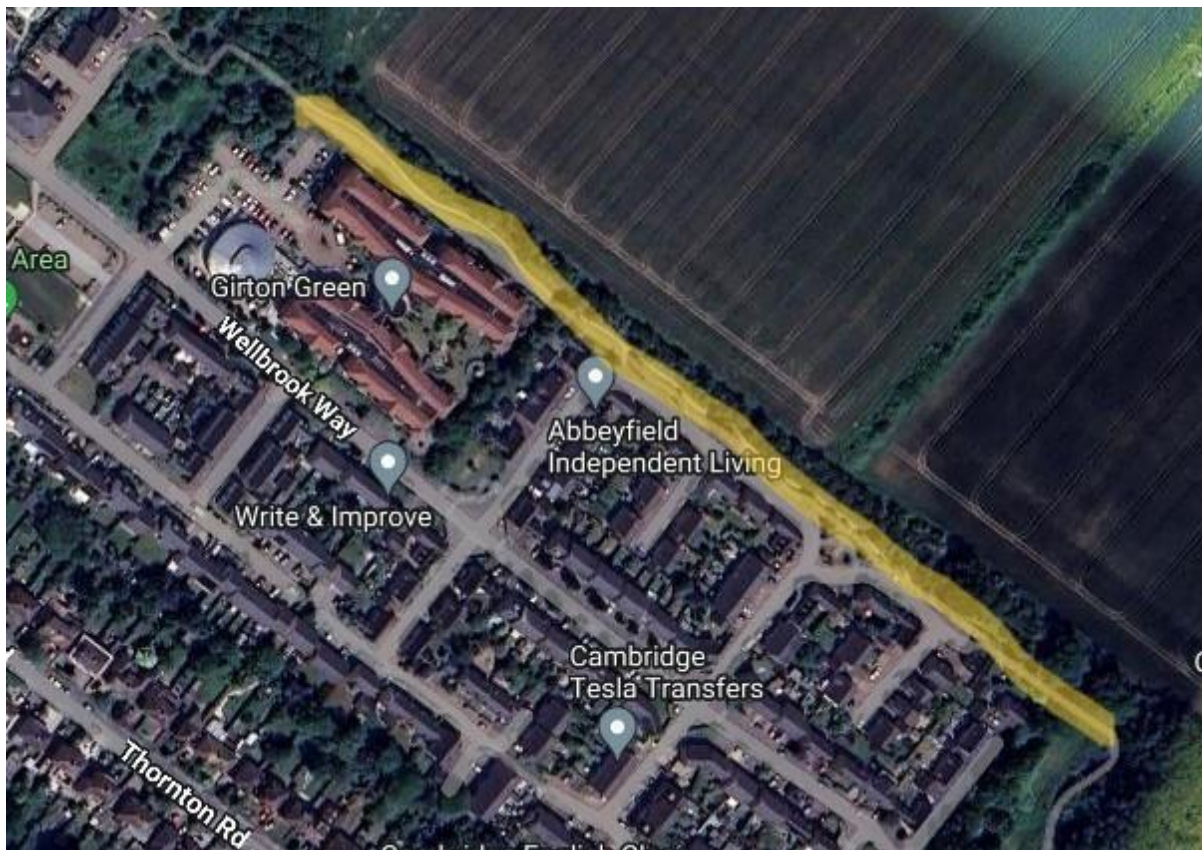


Fig 2: Map of Site 2 – Northern Boundary Path (Source: Google Maps)

The path is bounded by a mature hedge with some large well-established trees, and a grass edge in part. This has value both as a habitat in itself but also as a ‘green corridor’ between Sites 1 and Site 3. A singing Yellowhammer, possibly the last one in the village has been heard now on two visits demonstrating its significance for wildlife. Some trees may merit some maintenance once a tree officer is in post, and the hedge would need occasional work to prevent it becoming a line of trees.

Beyond the mature hedge is the land earmarked for development as part of Darwin Green. This land appears to be fairly flower-rich meadow with some scrub, so it would be worthwhile engaging with the developers at Darwin Green to prevent any unnecessary degradation to preserve its wildlife value

The other side of the path for a 100 yards behind the Arlington Manor Care Home is primarily grass land of some benefit to wildlife if left unmown and with leavings removed when it is finally mowed. It could be improved and turned into a proper wildflower meadow, improving its attractiveness for pollinators.

Further along the path is hedge planted at the time of the Wellbrook Way development. It is not wide enough to be of significant wildlife value but is a useful boundary for the path, nevertheless.



Image 3: Boundary Path behind Arlington Manor Care Home looking south east

Summary of Recommendations for Site 2 – ‘Northern Boundary Path’

- 1. Carry out some maintenance on mature trees in the boundary hedge.**
- 2. Prevent the hedge shrubs becoming ‘trees’**
- 3. Engage the Darwin Green developers to prevent any degradation of the meadows beyond the mature hedge**
- 4. Support pollinators by leaving grass verges unmown during ‘No Mow Summer’ and collecting leavings one finally mowed**
- 5. Establish a wildflower meadow bank behind the Care Home**

Site 3 – Woodland/meadow area

At the end of the 'Northern Boundary Path' there is an area of woodland and meadow running approx. northeast to southwest in orientation. There are several established paths through this area.



Fig 3: Map of Area 3 – Woodland/meadow Area (Source: Google Maps)

The meadow area here is well established, rich in wild plants, and on our visit hosted many butterflies. It appears some maintenance is being carried out presumably by the local community (?). The main maintenance measure needed here would be to knock back the brambles periodically to prevent them encroaching on the meadow (though not to remove them entirely).

Similarly the woodland is well established and hosts singing (and probably breeding) birds such as Chiffchaff and Blackcap. Some trees would benefit from some maintenance (including a rather splendid Willow).

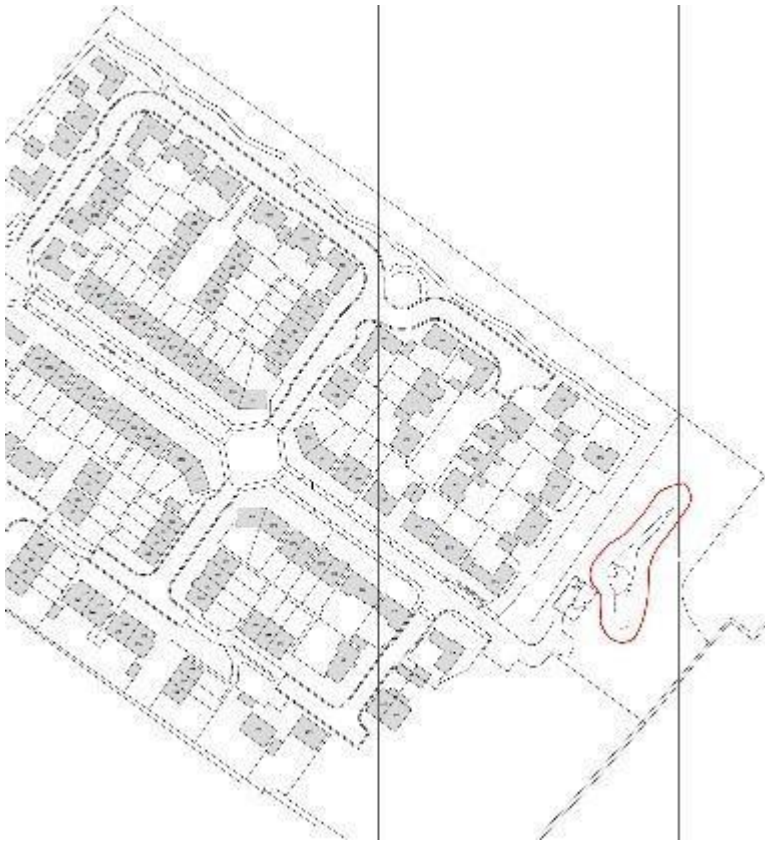
There is a stream running through the woodland area, but unfortunately on our visit this had dried to a trickle. This merits further investigation as according to Wellbrook Way resident, Bill Lankford this is the first year the stream had not flowed. Given the wet winter and the consequent full aquifers, this situation should not be occurring. Streams act as 'blue corridors' for wildlife and it is possible this is a chalk stream fed tributary. The source of this stream needs further research.



Image 4: Site 3 - Woodland/meadow area looking south west (woodland on left; meadow on right)

Another area to consider is the Balancing Pond owned by Anglia Water. This appears to have become completely overgrown and dried out. According to Bill Lankford the area around the Pond used to host many toads and frogs in Spring. It barely has any now. Helen Bailey, Land Advisor at the BCN Wildlife Trust confirms that removing the vegetation and digging out the pond would restore its wildlife value.

The Balancing Pond is subject to a Deed of Grant to Anglia Water from the Parish Council, which comes with a set of covenants which appear to restrict the opportunities to make any material changes to the pond and surrounding land to benefit wildlife. This needs further exploration.



Summary of Recommendations for Site 3 – Woodland/meadow area

1. Establish management routine to knock back brambles near meadow area to maintain wildlife value of the meadow
2. Carry out routine maintenance on mature trees in woodland area (including a large Willow)
3. Investigate source of stream and reason for loss of flow this year
4. Establish wildlife value of Anglia Water balancing pond and whether Deed of Grant allows for any improvements

Fig 4: Map showing Balancing Pond area ((Source:

Taylor-Wimpey)

Final Considerations

The three areas under consideration already hold significant biodiversity value for the Parish. However, our recommendations could further enhance these areas, benefiting both nature and the community.

Initial work will require contractors but longer term the local community should be encouraged to take responsibility for some upkeep through a network of volunteers similar to this involved in the Hibbert-Ware Garden and the Town End Close reserve. However note that if an application is made to the Wildlife Trust to restore any of the ponds, that comes with a 25 year maintenance commitment by the Trust; there is some funding within that timeframe for maintenance work such as desilting or clearance of scrub/ vegetation in and around the pond which may cause the pond to fail as a suitable habitat for Great Crested Newt.

To fund the initial work that would not be covered by the Wildlife Trust grant for the ponds improvement, the Parish

Council could consider making an application to the Green Spaces - Shared Prosperity Fund Year 2 being offered by South Cambridgeshire Council. The application questionnaire <https://tinyurl.com/2dkrh2r6> is relatively simple to complete, but to note **the application window closes on 1st August**. Our ballpark guesstimate for the work needed is around £15,000, which (conveniently) is the amount on offer for each site under the fund.

Another consideration is the needs of dog walkers. We note that some dog walkers have made complaints about the impact of 'No Mow Summer' in Wellbrook Way. When and where to allow dogs off-lead and where they should be kept under close control to protect wildlife is a balance that needs to be managed, and guidance provided. But one possible solution is to assess whether the area between the play area and the car park at the William Collyn Centre could be made into a dog exercise park (similar to those that are provided in American cities where opportunities to let dogs off leads are few.)

Girton Parish Council Footpath report - July 2024

Cllr Daniel Carney

Overview of Rights Of Way in Girton

Rights Of Way can be found at Cambridgeshire County Council's definitive map, found on their website at:

<https://maps.cambridgeshire.gov.uk/>

No.	Category	Location	Description	Condition/notes
1	Footpath	Manor Farm Rd to Girton Woods	Gravel path becoming dirt track	Reasonable condition rural pathway.
2	Footpath	Oakington Rd, opp Gretton School	Tiny grass path	Essentially irrelevant legacy ROW.
3	Footpath	High Street to Church Lane	Tarmac path	Starting to become a little overgrown, but essentially OK. Some bits of surface could do with repair. Barriers at High St end unnecessary - possibly contravene Equality Act?
4N	Footpath	Woody Green to A14 footbridge via Weavers Field	Gravel/hardcore path, then tarmac path	Surface in acceptable condition for materials used. Appears to have been some recent vegetation cutback - by whom? Clearly used by cyclists and horseriders - would be obvious bridleway/byway.
4S	Footpath	A14 footbridge to Huntingdon Rd	Tarmac path	Hedgerow from Girton College starting to obstruct, but essentially very passable. Would be obvious bridleway, linking Huntingdon Rd pathway to NMU and link to forthcoming development of Eddington Northwards.
5	Footpath	Huntingdon Road to M11 underpass	Concrete roadway	Surface partly broken up. Gate locked closed across, not obvious to all that this is a Right Of Way. Would be an obvious bridleway, linking to Bridleway 154/2 in Madingley.
6	Bridleway	NMU towards Madingley	n/a	Still on map, but effectively non-existent and being stopped up. Arguments have been made that this was not done properly and ROW should be preserved.
7	Footpath	The Avenue to A14	n/a	Still on map, but effectively non-existent and being stopped up. Arguments have been made that this was not done properly and ROW should be preserved.

No.	Category	Location	Description	Condition/notes
8	Footpath	The Avenue towards Dry Drayton	Grass and dirt	Eastern end not clear, but unobstructed. Western end partly overgrown – was flailed by University Farms last year. Signage at either end not ideally sited.
9	Bridleway	Short stretch at far W of parish	Grass and dirt	Short stretch of bridleway in good condition.
10	Footpath	Whitehouse Ln towards Histon Rd	Tarmac path	Recently strimmed - by whom? Regularly used as cycle route - would be obvious bridleway or cycle path.
11	Footpath	Bandon Rd to Huntingdon Rd	Tarmac path	Short path in fair condition. Note that sign indicates also a cycle path, not reflected in Definitive Map.
12	Footpath	St Margaret's Rd to Thornton Rd	Tarmac path	Starting to become overgrown. Surface in acceptable condition.
13	Footpath	Thornton Cls to Whitehouse Ln	Tarmac path	Recently strimmed - by whom? Regularly used as cycle route - would be obvious bridleway or cycle path. Would benefit from dropped kerb.
14	Footpath	Dodford Lane to Northfield	Tarmac path	Good condition
15	Footpath	Wellbrook Way	Tarmac and sets	Unadopted Road
16	Bridleway	Oakington Rd bridge towards Girton Woods	Gravel & dirt surface	Good condition for bridleway usage
17	Bridleway	Washpit Lane to NMU	Tarmac path	Starting to become overgrown.

Note that Footpath #4 is split into a North and South part in this table to address the different parts of the path separately. This is not an official distinction.

Other routes, including non-ROW

Name	Category	Location	Description	Condition/notes
Bunkers Hill	Permissive path	From Girton Corner	Tarmac roadway	Fence was repaired and all plant life cut back but starting to encroach. University of Cambridge land. University have been asked about reinstating lighting on fences and replacing/repairing lighting floor studs.
Girton-Histon path	Permissive path	Ten Acre Field to Girton Woods	Dirt path	Barely dried out after being a quagmire over winter. Partly cut back (by who?) but still partly overgrown. County Farms land. Route has potential to be good, fully off-road route from northern Girton to Histon via guided busway, for commuting, school runs, general safe link between the villages
NMU	Awaiting reclassification	From A14 footbridge, parallel to A14	Tarmac road	Still awaiting formal conversion to Bridleway. NMU = Non-Motorised User
Oakington Rd cycleway	Cycle path	Oakington Rd	Tarmac path	Section by Manor Farm Rd starting to become obstructed from hedgerow on CCC land (still part of highway). Section between Manor Farm Rd and bridge over Beck Brook too narrow (well short of LTN 1/20 standards)
The Panhandle	Informal path	Two sides of 10 Acre Field	Grass & dirt path	GPC land
The Ridgeway	Permissive path	Eddington	Tarmac separated foot and cycleways	Now has lighting with motion sensors. University of Cambridge land.
Whitehouse Lane	Footpath	Whitehouse Lane	Tarmac and concrete roadway	Listed as Cambridge CC footpath (39/48).
Wellbrook Way path	Permissive path	Northern edge of Wellbrook Way	Dirt and gravel path	Mostly clear and in good condition, possible vegetation cutback required at Northernmost part, behind balancing pond.
Woody Green path	Footway	Woody Green	Tarmac path	Recently resurfaced. Report of pedestrian-cyclist conflict. Area needs proper cycle infrastructure to separate cyclists and pedestrians.

Recommended actions

Short term

1. Find out who has been maintaining Footpaths #10 & #13 and ask for details on schedule, etc.
2. Request update from CCC on when Definitive Map of Public Rights of Way will be updated
3. Contact Girton College re Footpath #4 cutback
4. Contact Cambridge Uni Farms re Footpath #8 cutback/flailing
5. Contact University Estates re lighting and maintenance of Bunkers Hill
6. Cut back vegetation at Footpath #12, Bridleway #17, Oakington Rd cycle way and Wellbrook Way path. (Parish Ranger/Green Team/other volunteers)
7. Add Footpath waymarker sign to gatepost on Footpath #5

Medium-to-long term

7. Press for updates to definitive map to align with updates to ROWs
8. Remove barriers from Footpath #3
9. Enact approved dropped kerb on Footpath #13
10. Convert footpaths #4 & #5 to bridleway, with appropriate accompanying improvements
11. Convert footpaths #10 & #13 to bridleway or cycle path (no additional works needed)
12. Push for upgrade to Girton-Histon permissive path to be all-year active travel route, with particular emphasis on links to Impington Village College
13. Seek improvements to Oakington Rd cycle path – widening of narrow points, drop kerb opposite business park
14. Seek improvements to surface of Whitehouse Lane, and more direct link to Darwin Green

Girton Parish Council

Finance & Resource Management Report

July 2024

Girton Parish Council completed and approve the required end of year 2023/2024** AGAR before 1st July deadline as in the past two years. This year increased information is required to support this important year-end information sheet and this work is now underway.

Our annual internal audit gave GPC a clean bill of health and the information and discussion with our Internal auditor continues to inform policy and process going forward.

Our Finance & Resource Management has undertaken a lot of work over the last three years and one of the most important was underpinning our accounts to allow us to budget for increasingly significant projects including Wellbrook Way Clubhouse and Toilets and supporting our Local Nature Recovery Group in their work to transform the Hibbert-Ware Garden. From January this year when our Wilby & Burnett were appointed as our Master Planner we look at even more key projects for the village to refurbish and develop Girton Recreation Ground Pavilion.

Our Accounts have changed this year from being largely operational to ensure that all finances were fully understood and all invoices being paid on time to a more mixed portfolio of Operations, New Projects and Asset Management.

Over the summer the Responsible Financial Officer and the Finance Committee will be working to further improve the governance, guidelines and information to further support these different spend areas to support to ensure that further autonomy can be given to different village groups to deliver for Girton with the supporting policy and process to support these.

We will also be looking at possible funding and again at the possible need for GPC to become VAT registered as we look at delivery of the Pavilion Refurbishment project.

Our budget this year was itemised and we will aim to continue to increase transparency and detail of our budget to incorporate the findings of initially the Master Plan and as we move forward likely our Neighbourhood Plan in our budget requirements. The information you have provided in our SWOT Survey and also latest Parish Survey are key to our budgets reflecting your needs and aspirations.

Please note the inclusion of Agenda Item 24FC/066.7 for review of the detailed budgets for Wellbrook Way Facilities and Local Nature Recovery Group to ensure Council have a clear overview of our new project spend. The LNR budget will be presented at the full Council meeting.

Introduction

The integration of new councillors into local parish councils is crucial for the continuity and effectiveness of local governance. A buddy scheme, where experienced councillors pair up with newcomers, could be a strategic approach to facilitate this integration. This document explores the potential benefits and concerns associated with such a scheme.

Benefits for New Councillors

1. **Guidance and Support:** New councillors often face a steep learning curve. A buddy can provide personalized guidance, making the transition smoother.
2. **Knowledge Sharing:** Buddies can share institutional knowledge and best practices, which are not always documented.
3. **Networking:** Buddies can introduce new councillors to key figures and stakeholders, expanding their professional network.

Benefits for Local Councils

1. **Increased Efficiency:** Well-integrated councillors can become effective more quickly, contributing to council operations without delay.
2. **Cohesive Work Environment:** The scheme can foster a sense of camaraderie and teamwork, leading to a more cohesive working environment.
3. **Succession Planning:** By preparing new councillors thoroughly, the council ensures a pipeline of experienced members ready to take on leadership roles.

Potential Concerns

1. **Resource Allocation:** Time and effort are required from experienced councillors to mentor their buddies, which could impact their own duties.
2. **Compatibility Issues:** Not all pairings may work well, potentially leading to conflicts or a negative experience for the new councillor.
3. **Perception of Favouritism:** There could be concerns that the buddy scheme creates an 'inner circle', leading to perceptions of favouritism or exclusion.

Conclusion

A buddy scheme for new councillors in local parish councils presents a promising opportunity to enhance the effectiveness of local governance. While there are potential concerns, these can be mitigated with careful planning and clear communication. Ultimately, the success of such a scheme will depend on its execution and the willingness of all parties to engage positively with the process.

This document serves as a starting point for discussion. It is recommended that feedback be sought from current and past councillors to refine the approach and address any concerns proactively.

Introduction

For smaller local parish councils, particularly those with 15 members or fewer, resources can be limited. Extending a buddy scheme to include experienced councillors from adjacent councils could provide additional support and insights. This extension aims to leverage the broader experience and foster inter-council collaboration.

Benefits of Cross-Council Buddies

1. **Broader Perspective:** Buddies from adjacent councils can offer a wider range of experiences and solutions that have been effective in different contexts.
2. **Resource Sharing:** Smaller councils may lack certain expertise; a buddy from another council can fill this gap, providing advice on specialized matters.
3. **Strengthened Alliances:** Such partnerships can lead to stronger regional alliances, which can be beneficial for addressing issues that cross council boundaries.

Addressing Unique Challenges

1. **Diverse Challenges:** Smaller councils face unique challenges that larger ones might not. A buddy from a similar-sized council can provide relevant advice.
2. **Tailored Support:** Buddies from adjacent councils can offer support that is tailored to the specific needs of a small council, such as community engagement strategies.

Mitigating Potential Concerns

1. **Confidentiality:** There must be clear guidelines on the sharing of sensitive information between councils.
2. **Equitable Exchange:** It's important to ensure that the exchange of knowledge and support is mutual and beneficial to both councils.
3. **Cultural Fit:** Careful matching is essential to ensure that the buddy's approach aligns with the culture and values of the smaller council.

Conclusion

Expanding the buddy scheme to include councillors from adjacent councils can significantly benefit smaller local parish councils. It can provide access to a wider pool of knowledge, experience, and resources, while also fostering a collaborative spirit among neighbouring local authorities. With careful implementation and attention to potential concerns, this extended buddy scheme could enhance the effectiveness and reach of local governance.

This proposal for cross-council collaboration should be further discussed and refined with input from all involved parties to ensure its success and sustainability.

Support groups and organizations play a vital role in assisting councillors and clerks in their duties. Here are some examples and how they support individuals in their roles:

1. **Local Government Association (LGA)**¹:
 - Provides **induction and training** for councillors.
 - Offers **access to council offices** and equipment like laptops and printers.
 - Gives **media and communications advice**.
 - Facilitates **research support** and political leadership development programs.
2. **Society of Local Council Clerks (SLCC)**²:
 - Acts as the professional body for local council clerks and senior council employees.
 - Offers **training initiatives** to support new clerks in their first 12 months.
 - Provides **professional advice**, discounts, and a platform for discussion and advice exchange.
 - Delivers **news and publications** with the latest sector news and information.
 - Ensures clerks maintain good practice by offering sector qualifications at discounted rates.
3. **Clerks & Councils Direct**³:
 - Serves as an **independent voice** for clerks, offering a platform to air views and seek solutions to common problems.
 - Circulates to local authorities and councils, providing a wide readership for shared concerns and discussions.
4. **Community Support Groups**⁴:
 - Local councils may have details of community organizations that provide help and support.
 - These groups can offer **localized assistance** and **networking opportunities**.

These groups and services provide a comprehensive support system that helps councillors and clerks to thrive in their roles, ensuring they have the necessary resources, training, and peer support to effectively serve their communities.

1 local.gov.uk 2 slcc.co.uk 3 clerksandcouncilsdirect.co.uk 4 gov.uk

The Councillors' Corner on Facebook

- **Experience Sharing**: It serves as an open forum for existing and retired councillors to share experiences and best practices.
- **Support Network**: The group provides a platform for councillors to offer support to each other and work collaboratively.
- **Legislative Updates**: Members can receive relevant updates in legislation that affect Town and Parish Councils.
- **Idea Sounding Board**: Councillors can use the group to sound out ideas and receive feedback from peers.
- **Non-partisan Space**: The group maintains a non-partisan approach, focusing discussions on council-related subjects
- **Support and Training**: Offers support teams and training webinars for clerks and councillors, including an annual online event.

A new group called CIVIC has recently been formed to look at ways in which councillors and clerks can effectively lobby for respect from the wider public and from within. The recent election and the swearing on of new MPs has reignited debate on how local councillors are expected to behave. The following document was put together using AI by Yolanda Barker and posted on The Councillors' Corner. She suggests that it could be something that everyone says together at the Annual Meeting.

OATH for a new Parish Councillor and renewed at each Annual Meeting

I, [Name], do solemnly swear that I will faithfully execute the office of Parish Councillor, and will to the best of my ability uphold the values and responsibilities entrusted to me.

I commit to serving with integrity, honesty, and transparency, and to always act in the public interest.

I pledge to adhere to the Nolan Principles of public life: selflessness, integrity, objectivity, accountability, openness, honesty, and leadership.

I vow to follow the rules and guidelines set forth for Parish Councillors, ensuring my actions and decisions contribute to the well-being and betterment of our community.

In fulfilling these duties, I will strive to work collaboratively, respect the views and contributions of others, and uphold the trust placed in me by the people of this parish.

Ann Muston

Girton Parish Council Vice Chair

Chair of Human Resources

Chair of Finance and Resource Committee

Draft letter inviting the chair of a parish council to participate in a buddy scheme:

Dear [Chairperson's Name],

I hope this letter finds you well. I am writing to you in my capacity as Chair of the HR Committee of Girton Parish Council with an initiative that I believe could greatly benefit both new and existing councillors within our local parish councils.

As you may be aware, the integration and continuous development of councillors are crucial for the effective functioning of our councils. To this end, we are proposing the implementation of a Buddy Scheme—a structured programme where experienced councillors mentor newcomers to help them navigate their roles more effectively.

The scheme is designed to provide guidance, support, and knowledge sharing, ensuring that new councillors are not only welcomed but also become effective members of the council in a timely manner. Moreover, it fosters a sense of community and teamwork, which is invaluable in our line of work.

We are also considering extending this scheme to include buddies from adjacent councils. This would allow for a broader exchange of ideas and experiences, particularly benefiting smaller councils like ours, which consist of 15 members or fewer. Such cross-council collaboration could lead to stronger regional alliances and a more cohesive approach to local governance.

We would be honoured if [**Parish Council Name**] would consider participating in this buddy scheme. Your experience and insights would be incredibly valuable, and we believe that your involvement could set a positive example for other councils in our region.

Please let us know if you would be interested in discussing this initiative further. We are eager to collaborate with you and other local leaders to make this scheme a success.

Thank you for considering this invitation. I look forward to your response and the possibility of working together for the betterment of our local communities.

Best wishes,

Ann Muston
Vice Chair, Chair HR Committee and Chair Finance and Resources Committee
Girton Parish Council

ann.muston@girton-pc.gov.uk

Payments to Note and For Approval

Status	Contact Name	Invoice Number	InvoiceDate	Gross	VAT	Net	Description
Approval	Andrew Haylett (Repayment for Webservices)	A Haylett	10/07/2024	93.20		93.20	Web Services
Approval	Avanit Systems Limited	20429	03/07/2024	40.00	6.67	33.33	Projector Hire - Aug 2024
Approval	Avanit Systems Limited	20428	03/07/2024	40.00	6.67	33.33	Projector Hire - Aug 2024
Approval	Avocet	18787	30/06/2024	548.40	91.40	457.00	Cleaning service - Jul 2024
Approval	Brookfield Contracting Ltd	2880	02/07/2024	456.00	76.00	380.00	Verge Cutting 1 of 8 visits
Approval	MC Garden Maintenance	INV-0369	08/07/2024	1,068.00	178.00	890.00	Grass Cutting
Paid	British Gas	806589376	21/06/2024	453.73	75.62	378.11	Pavilion Electricity - Jun to Jul 2024
Paid	EverFlow Ltd:	3376901	17/06/2024	154.96	0.00	154.96	Water - Pavilion - Jul to Aug 2024
Paid	EverFlow Ltd:	3376900	17/06/2024	38.76	0.00	38.76	Water - Town End - Jul to Aug 2024
Paid	Microsoft	G051716449	05/07/2024	24.72	4.12	20.60	MS365 Business Std
Paid	Microsoft	G051431169	05/07/2024	135.24	22.54	112.70	MS365 Business Basic
Paid	South Cambridgeshire District Council	3030115017 Aug 2024	01/07/2024	586.00	0.00	586.00	Business Rates
Paid	WildScythe	24085 Booking Deposit	09/07/2024	105.00	0.00	105.00	Scythe Course
Paid	Zoom	INV261789228	21/06/2024	15.59	2.60	12.99	Zoom Jul/Aug 2024
Paid	Salary/Payroll	Aug 2024 Salary	01/07/2024	4,208.54	8.00	4,200.54	

GIRTON PARISH COUNCIL

Income Report June 2024

Village Planter Sponsorship	£2,160.00
Cricket Square	£344.00
Football Pitches	£1,019.40
MUGA	£603.15
Pavilion Hall	£487.00
Tennis Courts	£88.25
<u>Total Turnover</u>	<u>£4,701.80</u>

Bowls Club Budget

23FC/101.2 To review and approve proposal recommended by Sport & Recreation Committee task for provision of a Club House at Wellbrook Way Bowling Green in 2024/2025 Budget.

23FC/101.1 To review and approve proposal recommended by Sport & Recreation Committee for provision of Toilets at Wellbrook Way Bowling Green in 2023/2024 Budget.

Link to September 2023 Minutes: <https://www.girton-cambs.org.uk/wp-content/uploads/2023/10/Girton-Parish-Council-@Full-Council-Approved-Minutes-13th-September-2023-at-7.30pm.pdf>

Link to September 2023 Agenda and Business Case: <https://www.girton-cambs.org.uk/wp-content/uploads/2023/09/Girton-Parish-Council-@Full-Council-Agenda-13th-September-2023-at-7.30pm-3.pdf>

Approval Category	Organisation	Item	Invoice Number/Credit Note	Date	Amount (incl VAT)	VAT	Amount (Excl VAT)	Status
Planning Application	PortalPlanQuest Limited		PP12557124v1AHE	25/10/2023	295	10.67	284.33	
Planning Application	TerraQuest Solutions Limited: GB 369 3427 65	Online generation of Site Plan of Wellbrook Way Bowling green	48219	25/10/2023	21	3.5	17.5	
Planning Application: Total	Total				316	14.17	301.83	
Club House Installation	Eco Studios	Initial 25%	1520241	15/02/2024	£14,113.82	£2,352.30	£11,761.52	Paid
Club House Installation	Eco Studios	Proforma 50%	1520241	08/04/2024	£28,227.64	£4,704.60	£23,523.04	Paid
Club House Installation	Eco Studios	Final 25%	1520241	30/04/2024	£14,113.82	£2,352.30	£11,761.52	Paid
Club House Installation: Total	Total				£56,455.28	£9,409.20	£47,046.08	Paid
Toilets Installation: Total	Containers Direct		INV-2089	29/01/2024	£7,410.00	£1,235.00	£6,175.00	Paid
Toilets Installation: Total	Containers Direct		INV-2090	24/04/2024	£7,410.00	£1,235.00	£6,175.00	Paid
Toilets Installation: Total	MB Cadman	Connection to Sewer	No Invoice Number	12/02/2024	£3,850.00	£0.00	£3,850.00	Paid
Additional Installation Work	MB Cadman	Final Sewer, Water & Electrical Connections	No number	14/05/2024	£1,000.00	£0.00	£1,000.00	Paid
Toilets Installation: Total	Total				£19,670.00	£2,470.00	£17,200.00	Paid
Additional Installation Work	MB Cadman	Step for Club House	No number	14/05/2024	£190.00	£0.00	£190.00	Paid
Additional Installation Work	MB Cadman	Extra Electrical Work: Club House	No number	14/05/2024	£162.00	£0.00	£162.00	Paid
Additional Installation Work	To Be Confirmed	Ramp for Disabled Toilets	To be confirmed	To be confirmed				
Additional Installation Work	Total				£352.00	£0.00	£352.00	
Actual Installation	Total				£76,793.28	£11,893.37	£64,899.91	
Approval for Installation	Total				£77,256.00			
Under/Over Budget					£462.72			

Bowls Club Budget

Full Council Approval - March 2024: 23FC/212.3 Council to approve purchase of fitted Kitchen and furniture/equipment for Wellbrook Way Clubhouse
Wellbrook Way Club-House (& Toilets) Approval & Spend to date 20th May 2024

Link to March 2024 Quote information: <https://www.girton-cambus.org.uk/wp-content/uploads/2024/03/Girton-Parish-Council-@Full-Council-Agenda-Pack-13th-March-2024-at-7.30pm.pdf>

Approval Category	Organisation	Item	Invoice Number/Credit Note	Date	Amount (incl VAT)	VAT	Amount (Excl VAT)	Status
Fitted Kitchen	B&Q		2072751644	25/03/2024	£276.97	£46.16	£230.81	Paid
Fitted Kitchen	B&Q	Kitchen Cabinets Handles	2072357248	17/04/2024	£31.20	£5.20	£26.00	Paid
Fitted Kitchen	B&Q	Kitchen Delivery Charge	2074189116	29/04/2024	£75.00	£12.50	£62.50	Paid
Fitted Kitchen	B&Q	Kitchen Fittings	2074030113	30/04/2024	£3,005.60	£500.91	£2,504.69	Paid
Fitted Kitchen	Various	Kitchen Fittings	Various		£110.78	£15.97	£94.81	Awaiting payment
Equipment	Girton Bowls Club	Kitchen Fitting by Bowls Club	No invoice received to date	N/A	£2,000.00	£0.00	£2,000.00	To discuss
Fitted Kitchen	B&Q Refund	To be confirmed	Not yet received	07/05/2024	£263.20		£263.20	Received. To confirm detail
Fitted Kitchen	B&Q Refund	To be confirmed	Not yet received	10/05/2024	£120.80		£120.80	Received. To confirm detail
Fitted Kitchen	Fitted Kitchen Actual to date (Note: Dishwasher included, not required in original quote)				£5,115.55	£580.74	£4,534.81	
Fitted Kitchen	Fitted Kitchen Quote				£4,335.57			
Fitted Kitchen	Actual to date minus Quote				£779.98			
Cutlery/Furniture	EE-Supplies.co.uk	Tables	14365	29/04/2024	£1,024.80	£170.80	£854.00	Paid
Cutlery/Furniture	Girton Golf Club	Chairs	26	01/05/2024	£100.00	£0.00	£100.00	To Pay Girton Bowls Club
Cutlery/Furniture	Amazon.co.uk	Cutlery Set	DS-ASE-INV-GB-2024-207909888	13/05/2024	£9.99	£1.67	£8.32	Paid
Cutlery/Furniture	Amazon.co.uk	Cutlery Set	DS-ASE-INV-GB-2024-176028143	23/04/2024	£37.16	£6.68	£30.48	Paid
<i>Cutlery/Furniture</i>	<i>Amazon.co.uk</i>	<i>Cutlery Set</i>	<i>To Be Confirmed</i>	<i>To Be confirmed</i>	<i>£15.00</i>		<i>£15.00</i>	<i>Estimate only</i>
Cutlery/Furniture	Amazon.co.uk	Small Dinner Plates	INV-GB-107614431-2024-233672	30/04/2024	£34.98	£5.83	£29.15	Paid
Cutlery/Furniture	Amazon.co.uk	Coffee Mugs Set	GB42OV1XMAEUI	30/04/2024	£25.31	£4.22	£21.09	Paid
Cutlery/Furniture	Amazon.co.uk	Plates	INV-GB-107614431-2024-233636	23/04/2024	£42.00	£7.00	£35.00	Paid
Cutlery/Furniture	Amazon.co.uk	Coffee Mugs Set	GB42OV218AEUI	23/04/2024	£25.31	£4.22	£21.09	Paid
Cutlery/Furniture	Amazon.co.uk	Coffee Mugs Set	GB42OPM6YAEUI	23/04/2024	£25.31	£4.22	£21.09	Paid
Cutlery/Furniture	Cutlery/Furniture Actual to date				£1,339.86	£204.64	£1,135.22	
Cutlery/Furniture	Cutlery/Furniture Quote				£1,651.86			
Cutlery/Furniture	Actual to date minus Quote				£312.00			
Equipment	Appliance City	Boiling Water Tap	1/622166	23/04/2024	£1,099.00	£183.17	£915.83	Paid
Equipment	Amazon.co.uk	Sign - Boiling Water Tap	Amazon - TBC	20/05/2024	£1.92	£0.32	£1.60	Paid
Equipment	Amazon.co.uk	External Door Mat	Amazon - TBC	03/06/2024	£14.99	£2.50	£12.49	
Equipment	Amazon.co.uk	Hand Towel Holder	Amazon - TBC	20/05/2024	£87.00	£14.50	£72.50	Paid
Equipment	Consumables	Various	Tesco Receipt	20/05/2024	£75.37	£0.00	£75.37	Paid
Equipment	Consumables	Various	B&M Receipt	20/05/2024	£16.68		£16.68	Paid
Equipment	Consumables	Various	B&M Receipt - Credit	21/05/2024	£7.00		£7.00	Paid
Equipment	Consumables	Toilet Paper & Hand Towels	A to Z Supplies	20/05/2024	£104.96	£17.49	£87.47	Paid
Equipment	Consumables	Soap Starter Pack	Direct365	21/05/2024	£52.39	£8.73	£43.66	Paid
Equipment	Equipment Actual to Date				£1,445.31	£226.71	£1,218.60	
Equipment	Equipment Quote				£2,399.00			
Equipment	Actual to date minus Quote				£953.69			
Total	Total Actual to Date				£7,900.72	£1,012.09	£6,888.63	
Total	Total Quote				£8,386.43			
Total	Total to date minus Quote				£485.71			

Notes

Dishwasher originally noted as not required now included under Fitted Kitchen

Electric Hob not purchased as per original quote prepared

Miscellaneous of £100 allocated

Additional items noted: Dishdrainer, Cutlery drawer, Dustpan & Brush, Extra large broom, Washing up Bowl etc

LNRP Budget

Information to be added.

Estimated Operational Payments for August 2024

Status	Contact Name	Invoice Number	InvoiceDate	Gross	VAT	Net	Description
Approval	Avanit Systems Limited	20429	03/07/2024	40.00	6.67	33.33	Projector Hire - Aug 2024
Approval	Avanit Systems Limited	20428	03/07/2024	40.00	6.67	33.33	Projector Hire - Aug 2024
Approval	Avocet	18787	30/06/2024	548.40	91.40	457.00	Cleaning service - Jul 2024
Approval	Brookfield Contracting Ltd	2880	02/07/2024	456.00	76.00	380.00	Verge Cutting 1 of 8 visits
Approval	MC Garden Maintenance	INV-0369	08/07/2024	1,068.00	178.00	890.00	Grass Cutting
Paid	British Gas	806589376	21/06/2024	453.73	75.62	378.11	Pavilion Electricity - Jun to Jul 2024
Paid	EverFlow Ltd:	3376901	17/06/2024	154.96	0.00	154.96	Water - Pavilion - Jul to Aug 2024
Paid	EverFlow Ltd:	3376900	17/06/2024	38.76	0.00	38.76	Water - Town End - Jul to Aug 2024
Paid	Microsoft	G051716449	05/07/2024	24.72	4.12	20.60	MS365 Business Std
Paid	Microsoft	G051431169	05/07/2024	135.24	22.54	112.70	MS365 Business Basic
Paid	South Cambridgeshire District Council	3030115017 Aug 2024	01/07/2024	586.00	0.00	586.00	Business Rates
Paid	WildScythe	24085 Booking Deposit	09/07/2024	105.00	0.00	105.00	Scythe Course
Paid	Zoom	INV261789228	21/06/2024	15.59	2.60	12.99	Zoom Jul/Aug 2024
Paid	Salary/Payroll	Aug 2024 Salary	01/07/2024	4,208.54	8.00	4,200.54	

Plus any payments approved in July Full Council

Draft Timeline to consider for W&B Presentation & GPC Understanding and Decision-Making

#	Date	Event	Times	Events/Presentations/Decisions	Ask Lianne to attend
1	Wednesday 26th June	Full Council	7pm	Extraordinary General Meeting: Approval of AGAR 2023/2024, Presentation of Wilby & Burnett Recommendations	x
2	Week beginning Monday 8th July	Feast Preparation	N/A	Prepare Materials for display at Feast Girton Parish Council hope to: Display across wall of the Pavilion for Feast Day and Summer Holidays Both Neighbourhood Plan & Master Plan materials Have a Feast Stall	
3	Thursday 11th July	July Full Council	7pm	Will we be ready to include W&B Recommendation Motions below? 1. Council to consider and approve Survey quotes proposed 2. Council to consider and approve initial Surveyor 'Quick Win' recommendations 3. Council to consider and approve initial 'Quick win' recommendations	x?
4	Sat, 13th July	Feast Day	12 noon to 5.30pm	Feast Afternoon: 12 noon to 5.30pm Girton Parish Council to have 4 Stalls 2 x Girton Parish Council 1 x Neighbourhood Plan 1 x Local Nature Recovery Plan	x
5	School Summer Holidays	Summer Consultation for Girton	N/A	GPC & Neighbourhood Plan to open on Thursday afternoon (2pm to 4pm) for 6 weeks holiday for residents to come in and ask questions around the materials Refreshments to be served and hope to get Jack's Gelato and others up to Recreation Ground	
6	Weds 11th September	Committee	6.30pm/7.30pm	HR & Environment Committees + Discussion of W&B Recommendations	
7	Thurs 12th September	Committee	7pm/8pm	Sport & REC & Event Committees + Discussion of W&B Recommendations	
8	Tues 17th September	Committee	7pm	Finance & Resource Mgmt Committees + Discussion of W&B Recommendations	
9	Weds 18th September	Full Council	7pm	Will we be ready to consider W&B Recommendations based on public feedback via Summer Consultations, SWOT Survey, Neighbourhood Plan Survey: 1. Council to consider and review impact on budget for 2025/2026 Budget so that precept survey can be included in October Girton Parish News 2. Council to consider and approve in principal W&B recommendations	x?
10	Saturday 28th September	Possible Country Market & Display of Results of Master Plan	9am to 12.30pm	Community to get early display of W&B recommendations from September Full Council and flavour of next steps	x?



Are you

Passionate About Active Travel?

Why not help us start an Active Travel group for Girton?

Let's use resident voices to help Active Travel schemes and policy in Girton and beyond.

We think that only by having an organised resident-led scheme will bodies like the County Council really respond to residents needs and demands.

Help to organise and demonstrate the things that the village needs, for example:

- Joined up cycle paths and bridleway routes
- Safer pavements and footpaths
- Preserving Rights Of Way





Are you

Concerned About Speeding Traffic?

Why not help us re-start a Speedwatch group for Girton?

Let's use residents concerns , knowledge, and observations to make sure that our roads are used safely.

We think that empowering residents to address the concerns they have around the village allows for the best action and data collection possible.

Such a group could, for example, have access to the Parish Council's Mobile Vehicle Activated Sign and to Cambridgeshire Constabulary's training for running roadside schemes.





Are you

Disappointed By Buses?

Why not help us start a Bus Users group for Girton?

Let's use resident voices to help improve the bus services in Girton and beyond.

We think that only by having an organised resident-led scheme will bodies like the bus companies, the County Council, and the Cambridgeshire & Peterborough Combined Authority really respond to residents needs and demands.

Help to organise and demonstrate the things that the village's bus service need, for example:

- More reliable, frequent, and later running services
- Direct services to the most useful amenities
- Better links between villages and other public transport



Motion to approve electrical Survey for GPC

Wilby & Burnett were asked by Girton Parish Council to compile quotes for carrying out an electrical capacity check of the recreation ground at Girton. We approached four companies who we have worked successfully with on similar projects in the past and provided them all with the same request and an aerial photo of the recreation ground. We asked that they include for the pavilion building and overall recreation ground, including the floodlights for the courts.

The aim of this investigation is to ascertain what the current supply is, where the incoming mains are located, where the meters are located and the number of meters, and what the spare capacity is to both the building and the wider site so that we can establish what can be done in the future and whether additional supply would be required. This will allow for realistic budgeting for future works at the recreation ground.

We received the following quotations:

1. Four Seasons Electrical Services Ltd £280.00 & VAT
2. Garcia Engineering £1,500.00 & VAT
3. Mains 2 Power Electrical Ltd £1,700.00 & VAT
4. Associated Installations Ltd £2,580.00 & VAT

We interrogated the above quotations to establish whether they could be fairly compared.

It was established that Four Seasons had not allowed for the full extent of assessment that the others had, with no allowance for leaving clamps on the meters but just a 'snapshot' reading of the meters from a single visit. All the others had allowed for a 1 week to 1 month period for the clamps to be left in situ to monitor usage.

Upon clarifying, Garcia Consulting advised that they had excluded the clamp test which would need to be carried out by others and has (as yet) not provided a cost for this, and also excluded a site visit, which alone would add another £90.00. Our belief is that the overall cost including the clamp testing would move Garcia Engineering into third place and Mains to Power into second place.

Mains 2 Power confirmed that they would leave the clamps on for one week then return to site to remove the clamps and provide a report on these findings. A nearby Parish Council used Mains 2 Power to carry out a very similar requirement in 2023 and the report provided by Mains 2 Power were satisfactory for their requirements.

On the basis of the above review, our recommendation is that Girton Parish Council appoint Mains 2 Power to carry out the electrical capacity testing.

Please do not hesitate to contact us if you require any further information regarding this matter.

Kind regards

Lianne Toothill BA (Hons), DipArch, ARB, RIBA
Partner, Architect

7. Summary & Recommendations

7.16 The following costs are indicative only and it is recommended that a minimum of three contractor quotations are obtained:

	Cost (£)
1. Isolated slate repairs	£750.00
2. Redress lead flashing to balcony area	£500.00
3. Replacement of soffits and fascias	£6,250.00
4. Replacement of rainwater goods including gutters and downpipes	£3,500.00
5. Decorations to high level gable and gable window	£1,500.00
6. Easing and adjusting of windows and doors	£350.00
7. Isolated repairs to external doors	£150.00
8. Upgrading insulation within roof space	£3,000.00
9. Isolated repairs and decorations to all walls and ceilings	£4,500.00
10. Isolated repairs to ceramic tiles	£500.00
11. Replacement of vinyl flooring excluding changing rooms	£3,750.00
12. New flooring to changing rooms including shower areas and W/C	£9,800.00
13. Installation of upgraded fire doors (approximately 16no) – subject to FRA	£24,000.00
14. Isolated repairs / replacement of finger guards throughout	£750.00
15. Isolated repairs to kitchen installation	£700.00
16. Installation of a fixed fire alarm – subject to FRA	£15,000.00
17. Compliancy repairs to fire exit doors – subject to FRA	£1,500.00
18. Testing emergency lighting – subject to FRA	£350.00
19. Upgrade florescent lighting to LED	£7,500.00
20. Carry out Fire Risk Assessment (FRA)	£750.00
TOTAL BUDGET COST	£85,100.00

Items below that a handy man / in house team may be able to carry out:

Item 7 – Isolated repairs to external doors

Item 9 – Isolated repairs and decorations to all walls and ceilings

Item 10 – Isolated repairs to ceramic tiles

Item 14 – Isolated repairs / replacement of finger guards throughout

Item 15 – Isolated repairs to kitchen installation.

The works above depend on the ability of the person to carry out the work. I would not recommend carrying out isolated repairs and decorations to walls and ceiling until extensive refurbishment works have been complete, although some areas it may be appropriate if no further works are to be carried out within the room.

Hopefully the above makes sense but if you have any questions do not hesitate to contact me.

Kind regards

Harry Stone BSc (Hons)
Assistant Building Surveyor

Full Council

Pavements Are For People

Proposed Resolution

Girton Parish Council resolves that **Pavements Are For People** and will aim to:

1. Keep pavements free of obstruction
2. Keep pavements in a good state of repair
3. Keep pavements safe

Actions will be taken within the powers granted to the Parish Council by law.

Background

What does this mean?

- By adopting this motion, Girton Parish Council will use the means at its disposal to always try and make pavements as accessible as is possible for all users at all times.

What are the problems trying to be addressed?

- Many pavements are frequently obstructed by parked vehicles, forcing users into the main carriageway.
 - Whilst it is illegal to drive on a pavement, it is not currently illegal to park on the pavement in England & Wales (outside London), the Highway Code states: *“You **MUST NOT** park partially or wholly on the pavement in London, and should not do so elsewhere unless signs permit it. Parking on the pavement can obstruct and seriously inconvenience pedestrians, people in wheelchairs or with visual impairments and people with prams or pushchairs.”*
 - Note that the outcome of an HM Government consultation on changing the laws on pavement parking are yet to be published. The survey in the leadup to this noted that more than 95% of wheelchair users and people with visual impairments say they had problems with vehicles parked on pavements.
- Many pavements in the village have broken up and uneven surfaces making them difficult to negotiate for many residents.
 - Pavement parking is likely to be a contributory factor to degradation of pavements
- Other pavements are often obstructed by overgrown hedgerows, forcing users into the verge and/or the main carriageway.
- Other pavement obstacles also occur from time to time.
- Some pavements that are for pedestrians are frequently used by cyclists, causing conflict with pedestrians.

Why adopt this motion?

- Good quality, unobstructed pavements allow many more residents to be able to travel around the village safely, confidently, and independently. Such groups include people who:
 - have mobility problems requiring walking aids, wheelchairs, etc.
 - have visual impairments
 - are pushing prams, buggies, etc
 - are children
- Encouraging travelling by foot may cut down on short car journeys, which have a negative environmental impact.

Who supports this as a general principle?

- National Federation of the Blind of the UK have run a “Give us back our pavements” campaign since 1978, highlighting the dangers to the blind and partially sighted of pavement obstructions.
- Sustrans and Living Streets, published a “Walking For Everyone” report of 2022, which made a series of recommendations for addressing barriers to walking and wheeling. One of these was to “Ensure pavement space is reserved and maintained for people walking and wheeling.”

Actions upon adoption

What actions could the Parish Council take upon adoption?

- Resolution becomes a guiding principle for any future actions taken. Potential impact on pavements must be considered in all actions where this could occur from Parish Council actions.
- Resolution also forms a principle for basis of communication with Cambridgeshire County Council, the body that owns and maintains the highways, including pavements. This could include issues such as surface repairs, infrastructure improvement such as bollards, or better separation of cycling and walking facilities.
- A number of general publicity campaigns can be run under the auspices of the resolution:
 - Hedgerow cutback campaign
 - Anti-pavement parking campaign
 - Lobbying CCC to prioritise pavement repairs
- Signs could be placed in key locations highlighting the policy, reminding drivers not to park vehicles on the pavement. Could also be supported by cards to leave on windscreens, etc.
- A standard procedure could be enacted for noting hedgerows obstructing pavements, contacting owners with 14-day warning, cutting back hedgerow if no action taken, and reserving the right to bill the owner of said hedgerow - according to rights and responsibilities given in the Highways Act 1980.

Definition

Throughout this document the term “pavement” is used. It is to refer to what is technically called a footway. A footway either forms part of a highway, or runs alongside it, and limits the width of a highway which is carriageway.

References

- The Highway Code – Waiting and parking (238 to 252)
<https://www.gov.uk/guidance/the-highway-code/waiting-and-parking-238-to-252>
- Highways Act 1980, Section 154
<https://www.legislation.gov.uk/ukpga/1980/66/section/154>
- Closed consultation - Pavement parking: options for change
<https://www.gov.uk/government/consultations/managing-pavement-parking/pavement-parking-options-for-change>
- Walking for Everyone: Making walking and wheeling more inclusive
<https://www.sustrans.org.uk/media/11493/sustrans-arup-walking-for-everyone-inclusive-walking-report.pdf>
- Give Us Back Our Pavements
<https://www.euroblind.org/newsletter/2022/june/en/uk-give-us-back-our-pavements-campaign>



Unit 3, Chestnut Court, Willow Road, The Lakes Business Park, Fenstanton, PE28 9ET
Registered Office Address: Church Farm Cottage, Low Road, North Tuddenham, NR20 3DQ

Telephone: 01954 203836
Email: hello@richardsontreesurgery.co.uk
www.richardsontreesurgery.co.uk

QUOTATION

No. 9203

2.7.24

Liesbeth ten Ham
72 Girton Road
Girton
CB3 0LM

Alice Hibbert-Ware Garden:

- Cut back the branches from a Cotoneaster which overhang a neighbouring garden: £120
- Fell a dead tree: £230
- Remove all arisings, leaving the site clean and tidy

Sub-total: £350

VAT @ 20%: £70

Total: £420



Unit 3, Chestnut Court, Willow Road, The Lakes Business Park, Fenstanton, PE28 9ET
Registered Office Address: Church Farm Cottage, Low Road, North Tuddenham, NR20 3DQ

Telephone: 01954 203836
Email: hello@richardsontreesurgery.co.uk
www.richardsontreesurgery.co.uk

QUOTATION

No. 9195

27.6.24

Yvonne Murray
Parish Clerk
Girton Parish Council
The Pavillion
Girton Recreational Ground
Cambridge Road
Girton
CB3 0FH

1. Weavers Field:

- Grind down a stump: £45
- Remove the medium to large deadwood from three trees adjacent to No. 11: £150
- Crown-raise above the footpath to 2.5m: £160

2. Wellbrook Way:

- Fell the small, dead trees adjacent to the drive: £120
- Remove the dead/dying limb from an Ash tree: £325

3. Woody Green:

- It is unclear as to which branches are the issue for the neighbouring residents. The tree has been heavily cut back in the past. Some remaining longer lateral branches which overhang the footpath could be reduced back, but only to improve the aesthetics of the tree: £315

4. Woodlands Park:

- A large Silver Birch – cut back the overhanging branches to approximately 2m over the garden boundary: £420
- Remove all arisings, leaving the site clean and tidy

Sub-total: £1,535

VAT @ 20%: £307

Total: £1,842

Basketball Sign

