



GIRTON

Parish News

March 2026

Will it ever stop raining?!

Local support service available

I have 30 years experience in community care and am also qualified to teach exercise and fitness, so can help with mobilizing and gentle routines for gaining confidence and maintaining your independence.

We also offer assistance with domestic tasks, community access, health appointments etc.

References available.

To find out more please contact Martin

e-mail : martinjones333@hotmail.com

Tel: 01223 501922



Cambridge Building Services

conserve, protect, restore

A family run business for all your building and property maintenance needs.

Our services range from extensions, conversions and knock through's to windows, doors, brick and stone repairs.

Servicing domestic and commercial premises in Cambridge and surrounding villages.

hello@cambridgebuildingservices.co.uk

07943 276122

01223 956545

Martin Nelson Motors
Doctors, Dentist, Shops
of Girton
Official Girton Charity Hospital Trips

The local Taxi Service



Tel: **01223 276654**
Local trips, Airports and any Long distance door to door service
Using modern 100% fully Electric vehicles

Perfect Condition
Multisport Coaching Consultants

-1 TO 1 SWIM COACHING-



Improve your understanding, technique, performance and enjoyment.
All abilities. All ages.
I have my own coaching pool right here in Girton.
www.PerfectCondition.co.uk

Agewell Osteopathy Clinic

“Keeping you as active and strong as possible”



28 Woodlands Park, Girton.

www.agewellosteopathy.com

Email: Clinic@agewellosteopathy.com

Mobile: 07746 173007

Matthew Courtney-Jones: qualified in 1996. Girton resident since 2000

Helping with joint and muscle pain, strength and mobility

Consultation by appointment only.

Publication Information

Editor: Rob Neal, 101 High St., CB3 0QQ, tel. 07875 374966,

email editorgirtonparishnews@gmail.com

Secretary: Sheila Bowler, tel. 276914

Advertising Manager and Treasurer: Marion Fisher, 117 High St, CB3 0QQ, tel. 570866, email gpnads@girton-cambs.org.uk

Copy should be submitted to the Editor in electronic form, with any photos, graphics or logos submitted as separate attachments, not embedded in the file. Questions about submission should be addressed to the Editor.

The editorial team reserves the right to edit, accept or reject any material submitted for publication. The views expressed within the magazine are those of the contributors and do not necessarily reflect those of the editorial team.

A copy of the magazine is available on the Girton website at www.girton-cambs.org.uk, where you may also find expanded versions of selected items.

Advertisements

Prices for placing advertisements in the *Girton Parish News*, in black-and-white or colour, can be had on application to the Advertising Manager.

The advertising policy of the *Girton Parish News* aims to promote enterprises and activities from within Girton. The space available for advertisements is limited, and preference is given to businesses founded, situated, controlled and operated within Girton. The *Girton Parish News* reserves the right to decline to publish any advertisement which the Advertising Manager considers not to meet the objectives of this policy. Inclusion of an advertisement does not imply endorsement by the *Girton Parish News* of the product or service advertised.

The *Girton Parish News* is produced and distributed entirely by volunteers from the village, including the following:

Typesetters Claire Lightley, Shahila Mitchell, Bill Rothwell.

Distribution Coordinator Karen Richardson
email: gpndist@gmail.com

Editors and Proofreaders Chris Bowler, Mike Fay, Marion Fisher, John Gibson, Alison Giles, Carol Huxley, Michelle Jones, Mary Rodger, Kate Rothwell, Patsy Smith, Matthew Vernon.

Puzzle Corner Sian Franklin

Webmaster Andrew Haylett,

and many others. If you are interested in becoming involved in any capacity, please contact the Editor.

Printed by Printerbello Ltd, Girton, Cambridge
Tel: 01223 855195

We are excited to launch our new website
www.girtonfeast.org.uk

GIRTON FEAST



It has everything you need to know
about this year's Feast

The entertainment The games & rides
The food trucks and outlets
The sports activities



Friday 10 July

Rule the World

the No.1 *Take That* tribute band

Tickets, adults £13, children under 16 £3
now on sale via the website or by using QR code



Contents

Pages 5–7	Parish Council and Councillors' Reports
Page 9	Forthcoming Events
Page 11	Girton Glebe
Page 13	Gretton School
Pages 15–17	Gardening
Page 18	Neighbourhood Plan Response
Page 18	WI
Page 19	Girton Scoreboard
Pages 20–21	Girton Town Charity
Page 23	Puzzle Corner
Page 25	News for Older Residents and Club 55
Page 26	Friends of the Rosie
Page 27	Listening Lantern and Walking Group
Pages 28–29	Our Churches
Page 30	Bins and Mobile Library

Copy date for April 2026 issue: Wed. 11 March. Issue date: Sat 28 March. Covers 28 March – 25 April.



🐾 Cat & Dog Drop-in Visits
 🐾 Dog Walking
 🐾 House Sitting
 🐾 Secure Field Dog Walks

 🐾 Free complimentary Meet & Greet for all new clients


 🐾 Fully Insured
 🐾 First Aid & CPR Trained
 🐾 Full DBS Checked

07752 934858

Nicol's Cat & Dog Sitting Services

Nicols.CDSS








Osteopathy & Sports Massage

Back Pain
 Neck & Shoulder Pain
 Sciatica
 Hip & Knee Arthritis
 Sports Injuries
 Repetitive Strains
 Elbow & Wrist Pain
 Foot & Ankle Pain
 Jaw Dysfunction
 Posture Assessment



Bethany Garrett
Registered Osteopath
Qualified in 2015

 www.cambridgeosteopathy.co.uk
 07986 767702
 cambridgeosteopathy@gmail.com
 Vision Fitness, Oakington Road, Girton, CB3 0QH

Professional Knife Maker and Sharpening Service in Girton

I can sharpen all knives, secateurs, shears, kitchen scissors, loppers, axes, mattocks, spades etc, and make bespoke knives.

Contact: 07989 412908
(It's best to text me if you want a prompt reply)

Matthew Courtney-Jones



Girton Social Club
48 Cambridge Road, Girton CB3 0PJ
girtonsocialclub@gmail.com Tel 01223 276890



A members club run by the members for the benefit of the members.



We are a vibrant family orientated social club located in the heart of the village. Our aim is to provide a safe and friendly environment where residents can meet, socialise and make new friends. Girton Social Club operates as a not-for-profit organisation. All bar staff, cleaners and maintenance personnel are volunteers. We have an elected committee and all policy decisions reflect the wishes of the members. New members are always welcome so why not come along and be part of our growing community?






ANNUAL MEMBERSHIP: New £10 Senior £3.50 Education full/part time £3.50 Serving armed forces £1

Girton Parish Council



Hello Girton - and what a month it's been!

We've had a busy and uplifting few weeks at **Girton Parish Council**, and across our village we continue to see a calm momentum building: small things getting sorted, bigger things taking shape, and more people pitching in. It's wonderful to see residents, volunteers and partners helping our village thrive. Steady, practical steps that make Girton a little cleaner, safer and easier to enjoy.

Pavements Are for People

Thank you to everyone reporting hedges, overgrowth, drainage issues and tight walking spaces. The Pavements Are for People campaign continues to bring visible improvements across Girton. Your photos and short reports help us spot issues early and prioritise weekly work. Please keep them coming through the website's contact form—your input genuinely shapes what happens next.

Recycling in Girton - with special thanks to The George

A special thank you goes to The George, who have been leading and encouraging the Mr Blister initiative. Their support has helped Girton make real progress in recycling blister packs safely and conveniently. Recycling updates for March include:

- **Mr Blister** - still going strong, with more information on what can be dropped off coming shortly on the website
- **Pink bin for small electricals** - scheduled for April, giving everyone an easy way to recycle cables, chargers, small gadgets and more
- **Three-month recycling pilot** - the successful trial supported by South Cambridgeshire District Council is helping us explore recycling combi-bins for Girton
- **Potential expansion** - subject to funding, we hope to add additional blister-pack collection boxes in accessible village locations

These small changes add up to a cleaner, greener village and we're grateful to everyone taking part.

Crafty Folk @ the Hub - with Cambridgeshire ACRE

Our Crafty Folk community hub continues to thrive. With support from Cambridgeshire ACRE, we are exploring new community-support services they believe would be a good fit for Girton - friendly advice, social connection, skills sharing and more. If you'd like to join a session, offer a taster activity or get involved, please do contact us. Everyone is welcome.

Girton Forums - bringing people, places and projects together

The new forums submitted for approval at our February Full Council meeting are designed to connect residents with the village topics they care about: pavements, green spaces, recreation, community buildings, village wellbeing and more.

The Sports Forum and Business Forum have been put forward to ensure that we consider joined up initiatives and that your council precept money is spent on items that are really needed.

They tie up with our Parish Council workshop approach which are informal, open to all, and a great way to share ideas without needing to join the council.

Active Travel and Camcycle Recognition

We were pleased to have Girton's active travel work recognised by Camcycle - a lovely boost for our volunteers and partners.

Our new website

Our refreshed www.girton-pc.gov.uk website should be live as you read this article. Here's why this matters:
A trusted, regulated domain - gov.uk domains are controlled and verified nationally, meaning residents have a secure, dependable source of council information.
Continuity and professionalism - a gov.uk site belongs to the council—not any one individual—so information remains consistent through staffing or role changes.
Clearer information, easier access - meeting papers, news updates, consultations, recycling details and forum invitations are now easier to find.
Improving accessibility - the new site is cleaner, simpler to navigate and more accessible across different devices. We encourage residents to explore the site and provide feedback.

12-Month consultation and information programme

February Full Council asked councillors for approval to launch a 12-month consultation and information programme to help shape what we are calling "Girton's Great Plan". This year-long engagement will help us:

- understand resident priorities
- test ideas early
- shape longer-term projects
- feed into the work and neighbourhood plans and Local Plan engagement
- ensure the council's decisions reflect the community's needs and aspirations

Continued on page 6...

...Girton Parish Council continued

We will share details month by month on the website and through the forums. Residents will have multiple ways to get involved throughout the year.

Joint Meeting on Oakington Road traffic calming

Girton Parish Council and Oakington & Westwick Parish Council are working together to have an initial meeting with Cambridgeshire County Council (CCC) Highways to discuss the traffic calming on Oakington Road, particularly around safety and the impact it has had.

A joint meeting with CCC Highways is being arranged to progress next steps. We will keep residents updated on outcomes and any actions agreed.

Parish Council elections

Parish Council elections take place in May 2026. South Cambridgeshire District Council has detailed information on:

- how to stand for election
- key dates
- eligibility
- nomination papers
- election timetables
- guidance for new or returning councillors

Please visit the SCDC elections webpage for full details.

If you are thinking about standing, or simply want to understand what being a councillor involves, you are warmly encouraged to contact the clerk for an informal conversation. No commitment, no pressure - just a chance to understand the role, workload and what councillors actually do. Your interest and involvement are very welcome.

Thank you, Girton

Thank you for your ideas, questions, photos and kind feedback. Everything you share helps shape what we do next. We look forward to another month of steady, practical progress as spring begins.

Girton Parish Council
www.girton-pc.gov.uk




Dust Free Wood Floor Sanding & Restoration

Is your Wooden Floor in need of Sanding?

"In one day our scratched and stained parquet floor was restored to its beauty of once long ago. Many thanks." **Mrs Baker, Impington**

Call today on **01223 081494**
Please quote Girton 1



Paul Waldmann Woodwork
Established 1982

Furniture made & restored
Cupboards & bookcases
Garden furniture & fittings

Basic woodwork sessions
for young people & adults,
see website for more details

phone for a FREE ESTIMATE 01223 314001
41 Norfolk Street, Cambridge CB1 2LD
Email paulwaldmann169@gmail.com
www.paulwaldmannndesign.co.uk



ENTIRE GROUP 300007

The Complete Gas Heating and Plumbing Company

**Plumbing • Heating • Gas
Bathrooms • Water Softeners
Property Maintenance**

Tel: 01954 204044 • Web: www.entiregroup.co.uk
Email: service@entiregroup.co.uk

ARE YOUR LOCKS BEHAVING BADLY?

A Local Trusted Family Business Since 1989



Specialist in UPVC & Wooden Doors

No Call Out Charge All Work Fully Guaranteed

No Fix No Fee 10% Senior Citizen Discount

For More Advice & Help Call Christopher: **07772 111 222**

www.christopherthelocksmith.co.uk

From Our Councillors

District Councillors' Report

It has become clear that Government will press ahead with an agenda for significant growth in Cambridge and to tackle obstacles like water supply, drainage and transportation the Government has set up the Cambridge Growth Company (CGC), a development corporation to oversee development in Greater Cambridge.

We'll mention two consultations, one concerning local government reorganisation (LGR). This is your chance to ask about life under a new unitary authority, what the Parish Council will be expected to do, and how you can work with your new unitary councillor. The second is about CGC.

You can ask about (for example) how that organisation will work alongside local communities, taking views and engaging with communities and councils. We encourage you to put your views forward. All responses are considered and your question or comment may align with other local voices to make a greater impact.

Local Government Reorganisation (LGR)

Cambridgeshire & Peterborough Consultation

The UK Government has restarted the reform of local government, and to complete the process of creating single authorities to replace "two-tier" councils (like ours) with "unitary" councils. There are four proposals for LGR in Cambridgeshire and Peterborough, which have been developed by councils across the region. You can access the consultation at: <https://tinyurl.com/4wuk48c6>

The consultation is open now and closes on Thursday 26 March 2026.

Following the consultation the Government will announce its choice for Cambridgeshire, and will set in motion the re-organisation process.

Cambridge Growth Company (CGC)

SCDC's Scrutiny and Overview Committee recently had a meeting with Peter Freeman and the staff of the Cambridge Growth Company. We understand that CGC would like to visit parish councils, and this would provide an opportunity for residents to join, listen to the case of Cambridge growth and ask their own questions.

Last week the Government launched a consultation on the proposed "Greater Cambridge Development

Corporation". You can access the consultation at: <https://tinyurl.com/ytjc3kct>

This consultation closes on 1 April 2026.

Local Plan update - growth in South Cambridgeshire

The councils' annual look at how well its 2018 Local Plans are being delivered – through an Authority Monitoring Report for Greater Cambridge Shared Planning - confirms that despite challenges around water and other infrastructure, in the period from April 2024 to March 2025, permission for over 10,000 new homes was granted. 2,265 new homes - of which 700 were affordable homes - and over 60,000 square metres of new employment space - were constructed across Greater Cambridge.

Community Infrastructure Levy Plans

SCDC and Cambridge City Councils are currently considering proposals for the introduction of a Community Infrastructure Levy (CIL) strategy for securing contributions from developers for improvements to transport and other infrastructure to accommodate growth.

A CIL would also see a proportion of the funds collected - up to 25% where a Neighbourhood Plan is in place - being made available to local communities. Alongside these the councils are also considering the adoption of updated guidance on Section 106 Planning Obligations that accompany major planning application decisions.

Local Authority Elections May 2026

Elections for SCDC will be going ahead as normal on 7 May 2026. The elected councillors will sit for just two years until the new Unitary Council takes over in 2028.

*Cllr Corinne Garvie 07780 932267,
cllr.garvie@scambs.gov.uk*

*Cllr Richard Stobart 07950 934793,
cllr.stobart@scambs.gov.uk*

Puzzle solution (see page 23)

1	V	2	T	3	Y	4	G	5	Q	6	W	7	U	8	K	9	C	10	N	11	F	12	M	13	J
14	H	15	L	16	R	17	E	18	O	19	D	20	B	21	S	22	Z	23	P	24	X	25	A	26	I

JASON KIRBY LTD

EXPERT DECORATORS

All Aspects of Internal & External Decorating
Period, Residential & Commercial Properties
Wallpaper & Mural Install
Kitchen Cabinet & Furniture Re-Sprays
Floor Sanding & Restoration
Plastering, Coving & Artex
City & Guilds, NVQ Qualified
For Service, Quality & Reliability



☎ 01954 211775
🌐 jasonkirbyltd.co.uk

K & S Services

All Aspects of Carpentry & Joinery
Internal/External Painting & Decorating
Wall & Floor Tiling Laminate & Wood Flooring
Kitchen Fitting Bathroom Refits
Fencing Heating Systems

84 Pheasant Rise, Bar Hill, Cambridge CB23 8SB

Tel: 01954 200869 Mobile: 07548 796094

GIRTON ANTIQUES AND VINTAGE FAIR

Sunday 15th March 2026

William Collyn Community Centre
Wellbrook Way
GIRTON
Cambridge
CB3 0GP

9 am – 3 pm
Refreshments
£1 Admission
Free parking

Find 20 stalls filled with a charming variety of antiques, collectibles, and vintage items, this market offers something for everyone—whether you're a dealer, a buyer for TV and film props, an avid collector, or just searching for a one-of-a-kind piece.

www.ruralmagpie.co.uk
07803 052918

W J Guttering & Drainage

NO CALL OUT CHARGE - FREE QUOTATIONS



Gutter Cleaning, Repairs,
Replacement,
Soakaways & Blocked Drains

01223 510623
Mobile: 07720 146815

STEAMROLLER IRONING SERVICE

Free collection & Delivery



24/48 hour turnaround

Price 1lb in weight = £2.50 (minimum £30)

Please call me on 07742 319631 or
01954 210672.

WE TACKLE
ANY FIX!

Making Your Life Easier



- Kitchen & Bathroom install specialists
- Complete home refurbishment
- Guttering, Fascias and soffits
- Painting & Decorating
- Landscaping
- Electrical Services
- Carpentry
- Roofing
- Hard Flooring
- Tiling
- Locks
- Plumbing & Heating
- Fencing & Decking



☎ Rich 07731 493038
Ryan 07506 743857
🌐 www.imrbros.com
✉ info@imrbros.com

FORTHCOMING EVENTS

Music at Girton College

The French Connection: Parisian Tastes in Restoration London

Sunday 1 March at 2.30 pm (until 3.30 pm)
Old Hall, Girton College

Girton's resident early-music ensemble Les Acolytes, led by PhD student Edward Campbell-Rowntree, presents a programme of seventeenth-century Baroque music from France and England, including highlights from the Ballet Royal de la Nuit and works by Lully and Locke. Admission free; retiring collection

Handel's *Acis and Galatea*

Friday 6 March at 8.00 pm (until 9.50 pm)
Great Hall, Girton College

Cambridge University Chamber Choir
Cambridge University Collegium Musicum
Directors: Margaret Faultless (violin) and James Way (tenor)
£25 (general); £23 (concessions); £5 (students)
Tickets from www.cmp.cam.ac.uk/acisandgalatea

Chamber Music from Vienna

Sunday 8 March at 2.30 pm (until 3.30 pm)
Stanley Library, Girton College

Sophie Kileff and Yoonjae Hwang (violins); Elizabeth Ip (viola); David Ball (cello); Isobel Dubrovsky and Lilia Sokol (flutes); Morvern Scrivener (piano)

A programme of nineteenth-century Viennese chamber music featuring Girton College and Cambridge University students in Beethoven's late masterpiece, the C# minor String Quartet, Op. 131, and Franz Doppler's Andante and Rondo, Op. 25, for two flutes and piano. Admission free; retiring collection

Greg Burford's *Plumes of Smoke*

Tuesday 10 March at 8.00 pm (until 9.00 pm); and
Wednesday 11 March at 8.00 pm (until 9.00 pm)
Old Hall, Girton College

Girton College Music Society presents an original chamber opera. This hour-long work follows a chaotic afternoon at the beginning of World War II as a flustered Cabinet Minister grapples with the re-emergence of the White Feather Campaign, a movement designed to shame conscientious objectors. Couched in a warm tonal language, *Plumes of Smoke* promises comedy and tragedy, satire and thrill in equal measure.

Tickets from www.trybooking.com/uk/FSGJ
£5 students and children; £10 others

Recitalists in Concert

Friday 13 March at 8.00 pm (until 9.15 pm)
Stanley Library, Girton College

A selection of works from examination programmes, performed by Archie Purdue, Lindsey Lim and Olivia Napier, first- and second-year Music students at Girton College. Admission free; retiring collection

Celebrity Piano Recital

Sunday 15 March at 2.30 pm (until 3.30 pm)
Stanley Library, Girton College
Richard Ormrod, Professor at the Royal Northern College of Music and prizewinner at the Rubinstein and Tchaikovsky competitions, returns to Girton to perform J. S. Bach's D major Partita (*Clavierübung* Part I) and Schubert's Klavierstücke, D. 946. Admission free; retiring collection

Recitalists in Concert

Thursday 19 March at 8.00 pm (until 9.15 pm)
Stanley Library, Girton College
A selection of works from examination programmes, performed by Tomás Escobar, Poppy Dawid and Oscar Gardner, first- and second-year Music students at Girton College. Admission free; retiring collection



Girton Gardeners

Put these dates in your diary now!



Girton Garden Society

- Garden Society Spring Plant Sale on Saturday 2nd May 2026,**
2pm onwards at 46 Cambridge Road, Girton.
- Garden coach trips:**
 - Helmingham Hall, Stowmarket (www.helmingham.com)**
Wednesday 10 June 2026
 - East Ruston Old Vicarage Garden, Norfolk (eastrustonoldvicarage.co.uk)**
Wednesday 15 July 2026

Full details and prices on our website and in the April edition of GPN.

- Mini Show and stall with Girton Allotment Society at the Feast Week Village Fete on Saturday 11 July. Full details in the May edition and on the diary page of our website. Get planting now.**



Girton Garden Society

11 March 2026, 7.30pm
at William Collyn
Community Centre.



‘Beyond the garden gate – how the NGS came to be, and an outline of some local gardens worth visiting’

Jenny Marks, Cambridgeshire County Organiser,
National Garden Scheme.

A brief history of the National Garden Scheme (it really is quite old), its purpose then and now, and some of Cambridgeshire's participating gardens in pictures and stories.

Visitors and new members are always very welcome (£2 per session)



PS Dean Roofing

Traditional Roofing Contractors

Slates, Tiles, Guttering, Chimney's and Re-pointing

Re-roofing, Repairs, Lead-work, Free Quotations

01223 572504 07752 711175

paul@psdeanroofing.co.uk www.psdeanroofing.co.uk

22 Longstanton Road, Oakington, Cambs, CB24 3BB



**Prime
Plumbing
& Electrical**

For all your plumbing, electrical,
heating and general maintenance needs
Call Chris on

07802 807237

for immediate advice and free estimates



22a Cambridge Road, Impington,
Cambridge CB24 9LR

Tel/Fax: 01223 237795

e-mail: primeplumbing@yahoo.co.uk

A. P. GROUNDWORKS

**Block Paving • Patios
Driveways • Slab Laying
Groundworks • Drainage**
20+ years experience • Free Quotations
CPCS • CSCS • CITB qualified

Telephone Andy:

07944 813367 / 01223 233754

email: apascoe44.ap@gmail.com



WHERE THERE'S A WILL

After working as a solicitor for over 30 years, Kate Bennett now specialises in the writing of Wills and Powers of Attorney.

If you haven't done so already, for the sake of your loved ones, make your final wishes clear and get your affairs in order today.

For a trusted, experienced and straightforward service phone or email Kate to arrange an appointment to see her for a free no obligation meeting at your home.

Kate Bennett
07525 454160
kbennettlegal@gmail.com



H
HATTONS
FENCE POST REPAIR

**ROTTEN, LEANING
BROKEN FENCE
POSTS FIXED**

Fixed Price.

Fully Inclusive of Materials & Labour

Email: hello@hattonspostrepair.co.uk

Telephone or Text 07724 115 263

Visit www.hattonspostrepair.co.uk



Girton Glebe

A standout highlight of this half term has to be our wonderful opportunity to host visitors from China. Last week, Girton Glebe took part in its first ever cultural exchange,

welcoming four teachers and 32 students from Guangzhou International Primary School (Baiyun) ZWIE.

Our visitors were placed across Years 3 to 6, where each child was paired with a buddy to shadow for the week. They fully immersed themselves in school life, joining in with lessons and experiencing the true Girton Glebe way. From spending time in the forest to engaging in maths, English and project-based learning, the children embraced every opportunity with enthusiasm and curiosity.

It was wonderful to see how positively our pupils interacted with the children from China. Friendships formed quickly, and our children showed genuine interest in learning Chinese words and discovering important aspects of Chinese culture, demonstrating openness, kindness and respect throughout the week.

Our Year 4, 5 and 6 classes were especially fortunate to be taught by the visiting Chinese teachers, who shared insights into their country and its rich traditions. Pupils took part in hands-on cultural activities including fan making, bamboo weaving and puppet making, giving them a deeper appreciation of this amazing country and its heritage.

The week concluded with a joyful and inclusive celebration assembly, where our guests received certificates in recognition of their participation in the immersion programme. We were also treated to a beautiful Chinese cultural dance, which was a real highlight for the whole school.

We have been incredibly impressed by how welcoming and supportive our children have been. A huge thank you goes to our buddies, and to the wider school community, for helping our Chinese children and teachers feel so welcome and at home during their time with us. Experiences like these truly bring learning to life, strengthen our understanding of the wider world and help our pupils grow as caring, informed and internationally minded global citizens.

Chris Butler
Headteacher

Saving lives is a team effort

It takes a helicopter, highly skilled doctors, paramedics and pilots, and your support to save a life.

East Anglian Air Ambulance is a charity providing lifesaving critical care every day of the year, across Bedfordshire, Cambridgeshire, Norfolk and Suffolk. Whether by air or road, they are there for the most seriously ill and injured, when every second counts. Probably on the worst day of their lives.

They partner the emergency services and, in 2025, provided urgent treatment and care to 1,846 people, but they're not funded by the government - and that means they're fuelled by supporter donations.

So become part of the crew that keeps the helicopter rotors turning and crews responding to the region's medical emergencies, day and night.

For more information about East Anglian Air Ambulance visit eaaa.org.uk

Earn £30 for taking part in a sleep memory study

The Behavioural and Clinical Neurosciences Institute (BCNI) at the Downing Site of the University of Cambridge is looking for volunteers to take part in a sleep memory study.

Session One

Arrival Time: Evening, 7:00 PM

In the first session, you will complete a computer-based memory task where you will learn and recall the locations of different objects. After the memory task, the researcher will fit you with sensors on your scalp that you will wear home and overnight while sleeping. These sensors will allow us to monitor and stage your sleep. You will return home and go to sleep as usual while wearing the sensors. This session will take approximately 1.5-2 hours to complete.

Session Two

Arrival Time: The following morning at 9:00 AM

You will return to the laboratory the next morning to complete a second memory task based on the information you learned the night before. You will also receive instructions on how to remove the sleep sensors when you wake up. Following the memory task, you will be asked to complete a brief questionnaire about your lifestyle. This session will take approximately 1 hour.

Eligibility

- 60-80 years old
- Normal or corrected to normal vision
- No history of neuropsychiatric or neurodevelopmental disorder
- No history of Sleep Disorders
- Primary language English
- Currently not taking medication to treat symptoms of depression, anxiety, or low-mood (e.g. SSRIs).

If you are interested in signing up for the study, please go to: <https://shorturl.at/y19is>

 **fen** mobility centre

Scooters Wheelchairs Beds
 Recliners Walking Aids Living Aids
 Stairlifts Ramps Personal Care

Expert Advice | Sales | Service | Repair
Occupational Therapy







- ✓ Over 30 Years of Mobility Experience
- ✓ 100's of Items in Stock for Same Day Collection or Delivery
- ✓ Occupational Therapist on Site
- ✓ Test Drives & More
- ✓ Zero Pressure Guarantee
- ✓ Assessments in our Centre or Your Home
- ✓ Outstanding Aftercare, Warranties, Repair, Service & Hire

01353 653 753 www.fenmobility.com

Unit 5c Lancaster Way Business Park
Ely CB6 3NW

The Complete Bespoke Picture Framing & Printing Service

Unit 5 Oakington Business Park
Dry Drayton Road
Oakington
Cambridge
CB24 3DQ

01223 439001
info@hmcframing.co.uk





- Framing
- Mounting
- Repairs
- Reglazes
- Cleaning



- Artwork
- Embroidery
- Canvases
- Memorabilia









Collection & delivery available



Chartered Financial Planners

Is it time you had a full review of your financial needs and objectives?

With the government having made **significant changes** over the last couple of **Autumn Budgets**, it is very likely your current financial planning strategy requires a full holistic review to ensure it continues to meet your financial needs and objectives.

Whether it's passing money to loved ones and the **impact of the pension changes** or **Agricultural Property Relief to Inheritance Tax**, the increase in **Capital Gains Tax** or you're a **business owner** affected by the Budget, we can help evaluate your unique situation to ensure your future needs continue to be met.

With an experienced and well qualified team, **MM Wealth offers** a wide range of **holistic services**, including estate planning, use of trusts, pension advice including use of SSAS and SIPP, Discretionary Portfolio Management and protection planning. We are **committed** to working with **our clients, their families** and alongside your accountants and solicitors to create financial plans **through all life's stages**.

If you would like to talk to one of our Chartered Financial Planners, please contact us on 01223 233331 or email info@mmwealth.co.uk for advice.

Wellbrook Court
Girton
Cambridge
CB3 0NA
t 01223 233331
w mmwealth.co.uk






Disclaimer
Opinions constitute our judgment as of this date and are subject to change without warning. The value of investments and the income from them can go down as well as up, and you may not recover the amount of your original investment. The information in this article does not constitute a personal recommendation. The Financial Conduct Authority does not regulate estate planning and tax planning.

MM Wealth Ltd is authorised and regulated by the Financial Conduct Authority. Incorporated in England and Wales. Registered number 01454074



**GRETTON
SCHOOL**

We thought we'd start by sharing some exciting news with you! Over

the past few years, Gretton School has been proud to raise funds for multiple charities through our school events and the help and support of our local community. Thanks to the generosity of both our school and local community, we've reached an incredible total of nearly £6,000!

2025: £2,235.00

2024: £2,072.00

2023: £1,414.16

Turning to more recent events at Gretton, six keen key stage 4 learners have spent time at Hope Farm on the last Friday of January as part of their Duke of Edinburgh volunteering. We met the local residents and supported the Hope Active session, including delivering some freshly baked lemon drizzle cakes which were thoroughly enjoyed. We then had a tour of the Hope Farm site (we braved the weather and it turned out to be a beautiful sunny afternoon). We thought together about future projects we could do as a school, together with Alex and Mahesh from Hope Farm, to support the local community, for example, what vegetables we could grow. Watch this space!

We were thrilled to host a football match recently, bringing together learners from Gretton and other local schools for some spirited competition, teamwork, and community fun. It was wonderful to see so many young people enjoying sport, building friendships, and showing great enthusiasm both on and off the pitch.

Events like this are just as important as the learning that takes place within school, helping our learners develop social skills, manage expectations, and work collaboratively. At Gretton, we pride ourselves on preparing our young people for life beyond school and support them to become positive, confident contributors to their communities.

Last month also saw Safer Internet Day 2026 take place. We joined thousands of schools, organisations, and communities across the UK in marking this important day. Safer Internet Day is all about encouraging conversations around how young people use the internet: what they enjoy, what challenges they face, and how we can support them to stay safe and make positive choices when using or encountering Artificial Intelligence online. It's a chance for all of us to play a part in creating a more supportive digital world.

Our learners have recently taken part in mock exams in preparation for their official exams starting in May. At Gretton, we place just as much emphasis on our therapeutic support as we do on academic achievement, celebrating our learners' successes in all their shapes and sizes. If you'd like to see more of what our learners are achieving, follow us on Facebook and check out our 'Magic Moments' on Mondays - it's a wonderful way to see their everyday triumphs and celebrations!

Also, we have recently shared some insights from across our community through the Cavendish Insights Hub throughout January. Topics we've covered include:

- PE, sports, and inclusion for SEN students
- Beyond interventions: How Cavendish Schools support Autistic pupils
- Creating emotionally safe classrooms
- Speech, language, and literacy: How speech & language therapy supports reading and writing

There's always something new happening at Gretton, and we look forward to keeping you up to date with everything happening at Gretton in the summer term, from exams to our Pride event, and so much more.

*Victoria Howe
Deputy Headteacher*





STREETS
CHARTERED ACCOUNTANTS

For a refreshing approach...
...Switch to Streets

Accountants, auditors and tax advisers to owner managed and corporate businesses, entrepreneurial start-ups and scale-ups, UK subsidiaries with overseas parents, third sector organisations, company directors and high net worth individuals.

Cambridge
01223 570000
cambridge@streets.uk

Newmarket
01638 560505
newmarket@streets.uk

www.streets.uk @streetsacc Streets Chartered Accountants Streets Chartered Accountants

P. LOVERIDGE
Carpentry & Locksmith Services

TEL: 01954 202907 MOB: 07811 158018
EMAIL: PAULLOVERIDGE31@GMAIL.COM

ALL ASPECTS UNDERTAKEN

FITTED WARDROBES	LOCKS REPAIRED & REPLACED
ALCOVE CUPBOARDS	EMERGENCY ACCESS
KITCHENS FITTED	LOCKS KEYPED ALIKE
FIRST & SECOND FIX	HOME SECURITY UPGRADED

COULSON
Plumbing ♦ Heating ♦ Electrical

01223 423750
services@coulson.co.uk

All aspects of plumbing, heating and electrical works undertaken. From small maintenance tasks to large scale replacement & upgrade works.

Plumbing: Bathroom Refurbishments; Hot Water Cylinders.
Heating: Gas Boiler Servicing; Boiler Replacements & Upgrades; Central Heating Installations; Boiler Breakdowns & Faults.
Electrical: Electric Vehicle Charging Points; Consumer Unit Upgrades; Electrical Installation Condition Reports.

Delivering excellence since 1884




Rebecca Orde

Managing Your Property Renovations

I help clients in Cambridge and surrounding areas renovate their homes. I will guide you through the whole process from concept to completion, taking away all the stress that comes with undertaking a building project.

- ✓ A single point of contact
- ✓ A network of trusted trades
- ✓ Keeping your project on time & on budget

"It became very evident very quickly that using a professional project manager was a wise and sensible investment."
- Phillip W.



Phone: 01223 782125
Email: info@rebeccaorde.com
Website: www.rebeccaorde.com

Art of Clean "The Care Your Floors and Furnishings Deserve."

Carpet, Upholstery, Rug Cleaning & Wood Floor Restoration

"Impressed that you got hose from the van down the back garden. More impressed that you cleaned stains out of a 12 year old carpet. Clearly a superior service. Thank you."
Mr Tim Recordon, Girton

Call today 01223 081494
Please quote Girton 1



Dry Cleaning & Laundry

- Dry Cleaning
- Curtains
- Repairs & Alterations
- Leather & Suede
- Wedding Dresses
- Rug Cleaning
- Ironing Services
- Laundry




143 Milton Road Cambridge CB4 1XE
01223 755 180 www.FarthingsCambridge.co.uk

Wandering around the allotments during a soggy January I was reminded of a comment I made last winter about the two approaches to plot maintenance. The first, roughly speaking, is do nothing but be prepared to do a lot in Spring. The second is keep on top of the weeds throughout Winter and so be ready for the burst of activity that early Spring demands.

As an example of the second, here is a picture of a plot that would easily win the prize, if we had one, for the best kept Winter plot. It is weed-free and already incorporating lots of compost and manure. It should be in perfect condition when the first of the new season's crops are sown or planted.

Prize-winning plot?



Struggling blackberries

I mentioned last time that the weather had badly affected my raspberry and blackberry harvesting. The last raspberry was picked on New Year's Eve! It had been frozen but was still edible and tasty. The blackberries are still an unknown. As the picture shows, (taken end of January), the plants still have flower trusses and embryo blackberries.

Will they finally give up, or struggle on until warmer weather and then give an early crop?

As I was walking onto the allotment today I surprised a male pheasant. This was the first time I had seen such after twenty years of watching for wildlife on site. I hope that this is not a new threat to our crops. A quick check of pheasants' feeding habits suggests that seeds, berries, and creepy-crawlies are usual. However, green shoots are also mentioned as winter food. This fact could lead to future problems. And perhaps even more netting over winter crops!

I wanted to do some digging-in of a green manure crop and as I have a bad back at present I suddenly remembered that I possessed a Terrex spade. For anyone unfamiliar with this device it is a boon for back sufferers as it allows digging without bending. Just insert the blade as usual, pull back on the handles, and then pivot the spade to the next position without lifting. With a bit of practice the bladeful of soil gets thrown forward and flipped over. This buries any weeds.



Terrex Spade

The speed of digging is greatly increased and the fact that there is no need to lift the spade as you go along the row is another boon as it weighs 3.75 kg.

*John Gibson
Girton Allotment Society*

Girton Open Gardens 2026

Open Gardens will be held on Sunday 14 June 2026. Open Gardens is an established summer activity in the village, facilitating enthusiastic gardeners to share the results of their efforts with those in the village.

We need more gardens! Please consider taking part, all gardens are interesting – wild and formal, established or still developing. Open Gardens shows real gardens that have developed over years or even decades, where plans and ideas have worked or not, rather than the show gardens that are so often featured on TV which have been put together in just one week. Wildlife gardens are particularly welcome. Open Gardens is a chance to meet other residents of Girton, all brought together by a love of plants, wildlife and gardening.

Don't be put off by thinking you cannot see the other open gardens in the village if you take part. There will be two sessions with the allotments as the dividing line.

Girton College side 10:00-13:00 and church side 14:00-17:00. This gives a nice break in the middle plus an opportunity for openers to visit gardens in their off session. In addition to that, we are likely to arrange private views for participants during the following week.

More information contact
girtonopengardens@gmail.com

C & C BLINDS
 www.freewebs.com/candcblinds
SPECIALIST MANUFACTURERS OF:

- Vertical Blinds
- Roller Blinds
- Dutch Blinds
- Venetian, Wooden, Pleated, Roman
- Awnings
- Cleaning Service

any size, any colour
 free measuring & fitting
 shop in the comfort of your own home. FREE ESTIMATES.

email: colincoleman64@hotmail.com
 tel: 01223 211171
 mobile: 07761 262070

M&M
Heating & Building Services

- Full Gas Boiler Installation
- Full Heating Systems
- Boiler Servicing and Landlord Certificates
- Power Flushing
- Full Bathroom Design and Installation
- All Plumbing Works Large and Small
- Extensions, Alterations and Repairs
- Refurbishment and Renovations
- Kitchen Design and Installation
- All Carpentry Works
- All Building Works Undertaken
- Painting and Decorating

01223 691599
 Mob: 07766 281962/07832 261791
 info@mandmheating.co.uk • www.mandmheating.co.uk
 10 SOUTH ROAD, IMPINGTON, CAMBS. CB24 9PB

ARTISAN LANDSCAPES
 Est. 1988

www.artisanlandscape.co.uk

Paving, Fencing, Pergolas, Ponds, Pruning, Structures etc

jonathan_ashman@hotmail.com
 07768 821354

 Jonathan Ashman Artisan Landscapes

DD Mechanical Projects Ltd

- All aspects of Plumbing & heating
- Air Source Heat Pump installations
- Carpentry works
- Bathroom installations
- Kitchen installations
- Wall & floor tiling
- Decorating works
- Electrical works
- Project Management

Tel: 07885 231627 / 07557 794729
 Email: ddmprojects@outlook.com

CERTIFIED INSTALLER
 MCS APHC
 ASSOCIATION OF PLUMBERS & HEATING CONTRACTORS (EXETERIAN LIMITED)

RECC
 RENEWABLE ENERGY CONSUMER CODE

safe REGISTER
 96949

Shaun's Newsagents
Newspapers and magazines direct to your door

Shaun's News is Cambridgeshire's largest provider of door-to-door newspaper and magazine delivery service with a tailored and rapid solution to the needs of our clients, both residential and commercial. We deliver Newspapers to over 1400 customers in and around Cambridge (ca. 350 customers in Girton).

What Newspapers and magazines can you supply? We supply a wide range of local, national and international papers and magazines.

Newspaper/magazine delivery times? We start from 06:00 am and aim to finish all newspaper deliveries by 8:30am on weekdays and 9:00 am at weekends. However, most of our customers will receive their papers much earlier.

How much do you charge for delivery? We keep our delivery charges to an absolute minimum. To find out the service charge in your area please call or email us your order and address. Our delivery fees are extremely competitive and tailored to your needs. You can stop and re-start deliveries as often as you require.

How do I pay my bill? Our standard and preferred method of payment is direct debit. We also accept vouchers, payment over the phone with a credit or debit card, by bank transfer or in person by visiting our office. **If you have a subscription, we accept all vouchers and can apply them to your account in advance. In which case, you will not be charged for papers they represent.**

Billing frequency? Our system will generate automatic invoices and email them to you monthly. In the absence of an email address, you will receive a printed copy of your bill with your paper.

For enquiries, please contact us:
 Address: Shaun's News, Unit 13, Ronald Rolph Court, Wadloes Road, Cambridge, CB5 8PX
 Email: shaunsnews@gmail.com Telephone: 01223-650-777

Wild Girton

Newts! A roar of alarm from a developer feeling that their work is going to be thwarted. Great Crested Newts get the limelight, often for the wrong reasons, but we have a further two species in the UK - the Smooth Newt and Palmate Newt. The latter is not common in Cambridgeshire, preferring acidic waters of heath and moor. Our most common newt is the Smooth Newt, but in Cambridgeshire Great Crested Newts are relatively abundant too. So why are they a protected species? They are actually protected under European law as their population within Europe has declined significantly. However, the UK remains one of their strongholds, and Cambridgeshire one of the strongholds within. But that does not mean we should be complacent; indeed, it puts more duty on us to conserve what is relatively common so that it does not become rare here too and in time can become common again elsewhere.



So, what can we do to help our newts? One obvious answer is to create more ponds and maintain the ones we have to support them in the right way. Unlike frogs and toads, newts lay their eggs singly on flat leaves near the surface of the water, folding them over for

protection. If you don't have a pond the first step is to create one, and if you do then the second step is to make sure that there are plants such as Water Mint, Water Forget-me-not and Brooklime, and importantly no fish as they will eat the eggs!

Newts are actually terrestrial animals with an aquatic larval and juvenile phase – that is, once they are adults they spend most of their time on land, returning to ponds to breed. They will be returning about the time this article lands on your doormat and will remain in the ponds until June or July, the females having laid their eggs. After that they need suitable terrestrial habitat – in the wild this would be damp woodland and long grass, but they are often found under rocks or in gaps in your brickwork. They need to be kept moist which means that with our increasingly hot and dry summers it is becoming more important to provide suitable habitat – in your garden this could include log piles, piles of leaves under your hedge, areas of uncut grass or rot holes in old trees. As ever, don't be too tidy!



In Girton both Smooth Newts and Great Crested Newts are relatively common, so you may have both in your pond, but please note that you can only handle the latter if you are licensed to do so, though you should avoid handling any newt so as not to cause them stress. If you would like to know more about these newts, how to look for them and what they need then please come along to our Newts by Night event at 18.30 on 22 March at St John's Farmhouse (80 High Street).

You may also consider joining the Big Weed at the Hibbert-Ware Memorial Garden (opposite St Andrew's Church) on 7 March from 10-12, hosted by Girton Green Team.

lnrp@girton-pc.gov.uk

Girton Local Nature Recovery Plan Group




Join the BIG WEED

Hibbert Ware Garden
(Opposite St Andrews Parish Church)
Saturday 7th March
from 10 am – 12 noon

Currently maintained by a small group of enthusiastic volunteers. All welcome on a one-off basis or more regularly. Ideal for those with a passion for wildlife, gardening, or interested in meeting other community members.

Bring a trowel if you have one

Young children must be supervised Parents with children can leave at their discretion

Hosted by The Green Team and purpleflowersgm@gmail.com
supported by Girton Parish Council @Wild_Girton
@GirtonPCouncil




NEWTs by NIGHT!

St John's Farmhouse
80 High Street (opposite The Crown)
Sunday 22nd March
from 18.30-19.30

Join experts from the Wildlife Trust to hunt for newts in a garden pond. Find out what they need to thrive and how to tell a Great Crested from a Smooth.

Wrap up warm and bring a torch!

Young children must be supervised. No dogs please.

Hosted by Girton LNRP, supported by Girton Parish Council
@Wild_Girton @GirtonPCouncil

Neighbourhood Plan Response to Greater Cambridge Draft Local Plan

Cambridge City Council and South Cambridgeshire District Council are together preparing a 20-year master plan for the Greater Cambridge area, which includes Girton. This will supersede the current South Cambridgeshire Local Plan, which has been in force since 2018.

The new plan is undergoing rounds of consultation throughout 2026 and is expected to be adopted in 2027/28. It will determine future development in the wider Cambridge area including housebuilding, infrastructure, jobs, biodiversity, wellbeing and more.

For details, see :
www.greatercambridgeplanning.org/local-plan

Both Girton's Neighbourhood Plan team and Girton Parish Council have submitted responses to the Draft Local Plan in a consistent manner, working together to keep a common, one might almost say, golden thread throughout it all.

We have challenged their requirement for 90 new homes in Girton (excluding Eddington) by 2045 as it may be based on an incorrect estimate of Girton's population. We have encouraged them to regard the ecological aspects of Washpit and Beck Brooks more highly.

We have also focused on what is called the 'Girton Policies Map' and certain protected areas on that. Their proposed map defines the Protected Open Spaces as:

- Brook Leys.
- Other playgrounds and green spaces in Eddington.
- The ARU playing field on Whitehouse Lane.
- The future playing fields in Darwin Green Phases 2/3.
- The woodland and cricket field at Girton College.
- The ponds and woodland at the end of Wellbrook Way and the northern hedge line there.
- The Bowls Green and adjacent play area.
- Weaver's Field play area.
- The Allotments.
- Part of the St Vincent's Close circle.
- The Churchyard and the Recreation Ground (including St. John's Field).
- Area behind Gretton School (formerly Littleton House).

We asked them to add:

- The Rest of the area between the M11 and future built up area of Eddington.
- Playing field on Huntingdon Road side of Hotel Felix.

- The future Country Park in Darwin Green Stages 2/3.
- Millenium Wood.
- Hibbert-Ware Garden and Smithy Green.
- The golf course (but not the former practice field on Oakington Road).
- Town End Close nature reserve.
- The field between Duck End / Washpit Lane and the tarmac NMU close to the A14.

These additional areas all fit their definition of a Protected Open Space. There are some other areas that the Neighbourhood Plan team are considering as applying to categorise as Local Green Spaces, Protected Village Amenity Areas, or Important Countryside Frontages in the Neighbourhood Plan. The documents submitted are on the Parish Council website.

Andrew Muston
Neighbourhood Plan Team Lead



Girton WI

February's WI meeting was held on Wednesday the 4th. Unfortunately, the speaker we had arranged for this month was unable to make it, so we had to think fast! A good

turnout of members had arrived at the William Collyn Centre ready for their usual mix of speaker, raffle, and refreshments, only to be informed that plans had changed!

Our President Hannah asked around the members and a decision was quickly agreed upon: Corinne Garvie, one of our lovely members, and someone very well known to local Girton Parish News readers, had a suggestion – so she quickly went home and got a very simple game she had to hand. We were asked to get into groups of around five ladies and were each given a slip of paper. On the paper were questions i.e. "who is the most famous person you have ever met?" Another question was "what is your earliest memory." Well, everyone seemed to enjoy this idea and quickly took to it. Much discussion and laughter took place, and many memories were raked up from years ago. It's amazing what you can remember when you think hard.

We opened our tea and coffee counter earlier than usual, for everyone, so they could reminisce their stories whilst having a drink and some cake. Then the raffle was drawn and some good prizes won. All in all, another successful evening had taken place, albeit an unexpected one, but good, nonetheless. Corinne was thanked again for saving the evening and generally it was agreed that we had had a fun time.

Merilyn Burt

GIRTON

scoreboard



Girton Tennis Club

Our AGM will be held on Thursday 26 March, 7.30pm at The George. Many thanks to Michelle for agreeing to host us again this year. Like many voluntary committees, we are

fortunate to have a core group of members who are willing to help keep our club running but we would be delighted to have some more volunteers. Being on our small committee is not very time consuming and it gives you the chance to shape the way our club operates. If you are interested in how the tennis club is organised, please come along to the AGM. We will be reviewing the previous year and planning the next membership year which starts in April.

Our membership year normally starts with a discount for anyone paying their fees before the end of April so, if you are considering joining us in 2026, please refer to our website at the end of March, after our AGM, for details about revised fees and any discount.

Our club nights on Friday evenings have had to be cancelled several times over the last few weeks due to the very wet weather.

This rain is also making the recreation ground very muddy and keeping this off our shoes as we enter the courts is quite a challenge! Please continue to be as careful as possible to avoid carrying mud onto the tennis courts.

The tennis club has use of the recreation ground courts and members who have a confirmed booking have court access during most daylight hours. Club members meet and play from around 7.30pm to 9pm on Friday evenings (weather permitting). Potential new members are very welcome to come along to our Friday club nights for one or two free sessions to check it all out.

Details about our activities can be found on our web site www.girtontennisclub.uk or by contacting our Membership Secretary by email info@girtontennisclub.uk



Girton Bowls Club

For those of you who enjoy watching indoor bowls, the Annual World Indoor Bowls championships have been televised from Potters Resorts, Norfolk. Some titanic battles took place, one of which featured Jason Banks, ranked number 1 and Aaron

Johnson ranked fifteenth, who reached the last sixteen in the men's singles. Jason Banks was the eventual winner, 8-4,7-11 and taking the three set tie breaker, 2-1, which went to a measure on the last shot. Another nail biter was the ladies' singles final featuring Katherine Rednall, and Nicola Rogers who beat last year's finalist, Beth Riva to make it to the final. This match also went to a tie breaker and was eventually won by Katherine Rednall, making her 7th time world champion.

In the men's singles the final between Robert Paxton and Paul Foster MBE could not have been closer. The first set was drawn at 11-11 as was the second set 8-8. The tie breaker was won on the final bowl 2-1 with a spectacular shot, making Robert Paxton the winner for the second time.

Although Girton bowlers have been requested to nominate which leagues they wish to play in for the upcoming outdoor season, the indoor season is still in full swing, with many of the Girton players reaching finals in various competitions. There are six Girton ladies in the team of twelve who have reached the area final of the Yetton Plate and five Girton ladies who have reached the semi-final of the county pairs. Four of the men from Girton have managed to reach the semi-finals of the county men's triples. We also have two players who have reached the final of the county over-60 fours, which takes place in March.

The new season will start towards the end of April, so if you would like to try your hand at bowls, please do come and join us.

Our secretary, Margaret McCall, can be contacted at Margaret.McCall@ntlworld.com, or visit our website at www.girtonbowlsclub@weebly.com.

Transport schemes offer help to Village residents

For those who do not have their own car, find it difficult to drive, or are unable to use public transport, several different subsidised schemes are available to help Village residents live independently and get to hospital, doctor or dentist appointments, or to a range of supermarkets to do their shopping.

Medical appointments

Funded by Girton Town Charity, the Hospital Taxi Scheme provides a door-to-door service to attend outpatient appointments at Cambridge Biomedical Campus, including Addenbrooke's and its satellite and remote clinics. Members pay £8 per year to join the Scheme and then just £10 for each return journey, with any additional amount paid by GTC.

The Scheme runs from March each year and renewals are in the process of being sent out. Around 190 residents are currently members and feedback shows how popular this service is, taking away the stress of getting to appointments on time and helping with the costs.

Further details on 01223 276008
or visit: www.girtontowncharity.org.uk

Mrs T says "I'm very grateful to GTC for providing the Hospital Taxi Scheme for residents. It takes all the worry and stress out of going to Addenbrooke's which is now so big that I don't know my way around. It's also often impossible to park during the week."

Community scheme

Residents can also use the Histon, Impington and Girton (HIG) Community Car Scheme which is a volunteer-run service also providing door-to-door transport for people to get to medical appointments, make public transport connections, shop, visit the hairdressers or visit friends.

Passengers pay 30p a mile for journeys with a minimum charge of £3.

Further details on 01223 297881
or email hig.car.scheme@gmail.com

Can you spare some time to be a Volunteer driver?

Currently the HIG Community Car Scheme is seeking additional volunteer drivers to join the service. Volunteers can choose to give as much or as little



time as they wish and journeys can be anywhere in Cambridge, setting off from Histon, Impington or Girton. Drivers use their own car and are paid mileage costs.

For more information or to volunteer
email hig.car.scheme@gmail.com

Book a ride

Thirdly, Dial-a-Ride is available to residents in Cambridge or Girton, Histon, Impington, Milton or Fen Ditton, providing transport to supermarkets, to visit friends or relatives, to attend doctors or dental surgeries, health centres, hairdressers appointments, day centres or community groups in and around the city.

For shopping, regular return services from different pick up points are scheduled to visit Tesco's in Milton and Cherry Hinton/Fulbourn as well as Sainsbury's in Coldhams Lane.

Members, who pay £15 annually and a fare for each journey, are able to bring a friend or relative as an official escort at a reduced rate to help and accompany them during their outing.

Further details
<https://cambridgedialaride.org.uk/>

Girton TownCharity

Girton Town Charity exists for purposes which include the relief of need in Girton, either individually or collectively, or the support of any charitable purpose for the benefit of the inhabitants of Girton.

Enquiries on behalf of individuals or village organisations may be made in confidence and addressed to any of the Trustees below:

Ann Bonnett (Chair)	t: 276008
Rachel Allchorne	t: 276008
Marc Bermann	t: 277319
Colin Carr	t: 276312
Gill Cockley	t: 276703
Lynn Henderson	t: 276008
Andrew Muston	t: 07831 591809
Patsy Smith	t: 07503 282199

GTC office:

22 High Street, Girton,
Cambridge CB3 0PU.
01223 276008

email: gtc@girtontowncharity.org.uk
www.girtontowncharity.org.uk

Girton Town Charity Registered Charity No: 1130272

Babysitting course

Weekly on Thursdays
5.00 - 6.30pm
starting 16 April 2026
William Collyn Centre,
Girton



£20 per person

This is a tailor made 10-week course to help Girton young residents age 14 - 17 to gain a basic level of knowledge, understanding and learning in looking after other people's children (babysitting). As well as offering practical and hands-on experience, you will complete a portfolio of your work and receive a certificate on successful completion of the course, including Basic First Aid. It also includes digital badges for each section of the course to help with CVs and future volunteering or employment:

For more information and booking with Connections:
www.connectionsbusproject.org.uk

Course subsidised by Girton Town Charity

WILLIAM COLLYN COMMUNITY CENTRE

Monday

6.30am - 7.15am	AJR Fitness (Bootcamp) NEW
9.30am - 12.30pm	Tumble Tots (school term time)
1.30 - 2.30pm	Kurling for over 55's
5.45 - 9.00pm	Relationship Counselling
6.00 - 7.00pm	Pilates with Wendy Jane mixed ability

Tuesday

6.30am - 7.15am	AJR Fitness (Bootcamp) NEW
9.15 - 11.00am	Yoga with Julia Dale
10.30 - 11.30am	Strength & Balance
11.15am - 12.15pm	Yoga with Jess
2.00 - 4.00pm	Tuesday Connections AgeUK (monthly)
1.00 - 4.00pm	Cinema Club 55 (as advertised)
6.00 - 7.00pm	Pilates with Wendy Jane
7.30 - 10.30pm	Easton Swing

Wednesday

10.30am - 1.30pm	Falls Prevention Clinic
1.45 - 2.45pm	Pre-Ffit Strength & Conditioning
6.10 - 7.00pm	Bounce
7.30 - 10.00pm	The W.I. (1st in month)
7.30 - 10.00pm	Girton Garden Society (2nd in month)
7.30 - 9.30pm	Bookworms Book Club (4th in month)

Thursday

6.30am - 7.15am	AJR Fitness (Bootcamp) NEW
9.15 - 10.15am	Pilates with Wendy Jane intermediate
10.20 - 11.20am	Pilates with Wendy Jane beginners
2.15 - 3.45pm	Silver Swans ballet mixed ability
5.45 - 6.45pm	Pilates with Jax Eades
7.15 - 8.00pm	Ballroom Dance Class
8.15 - 9.00pm	Ballroom Dance Class

Friday

10.00 - 11.00am	Crumb & Bass (under 5 years)
7.30 - 10.30pm	Easton Swing (3rd in month)

Saturday

9.00 - 10.00am	Bounce
10.30am - 1.00pm	Cambridge Jazz Co-op
2.00 - 4.00pm	Farmers Market (2nd in month)

Sunday

9.00 - 11.00am	Football Fun Factory (18mths - 5yrs)
----------------	--------------------------------------

Information correct at time of going to press.

William Collyn Community Centre

Wellbrook Way, Girton, Cambridge
CB3 0GP
01223 279587

info@williamcollyn.co.uk
www.williamcollyn.co.uk

Owned and operated by Girton Town Charity



William Collyn
Community Centre



@williamcollyncentre

OAP Skips - cheap skip hire!



Based in Dry Drayton but we cover:
Bedfordshire, Cambridgeshire & Hertfordshire.

Quick turnaround.

One size skip only - 4 yard.

£150 per skip

Call Gary today on 07706 032544!

ARCHITECTURAL DRAWINGS

FOR

PLANNING & BUILDING REGULATION APPLICATIONS
EXTENSIONS, ALTERATIONS, LOFT CONVERSIONS ETC

CONTACT US now to arrange a **FREE** on-site meeting at your convenience to discuss your project

01353 649649

mail@elydesigngroup.co.uk

ELY DESIGN GROUP

www.elydesigngroup.co.uk

MOBILE HAIRDRESSER

ALL ASPECTS OF HAIRDRESSING DONE IN
THE COMFORT OF YOUR OWN HOME



CONTACT TANYA ON: 01954 211034

MOBILE: 07719 902450



01223 832 928

www.Rothwells.biz

A few points that make us stand out from the others,

Rothwell's has been in business since 1993.

We're an honest local family firm.

Our large truck mounted machines mean more cleaning & drying power.

Members of both the NCCA and TACCA.

We will move the furniture for a thorough clean.

100% satisfaction or it's FREE.

Call Oliver and Max Campbell for expert help today.



Mob: 07870 372788



www.ds-electricalservice.co.uk

LM Groundworks & Landscaping

- ❖ Patios
- ❖ Paving
- ❖ Footings
- ❖ Drainage
- ❖ Fencing
- ❖ & more

Tel: 01638 743627 / Mob: 07934 642716



Specialists in Wood Flooring,
Carpets & Vinyl Flooring Solutions

QUALITY FLOORING SUPPLY, INSTALLATION & AFTERCARE

"What a fantastic company. Knowledgeable and friendly staff and quality services. My company has used Art of Flooring on a number of occasions already and have been delighted with the whole experience. Thoroughly recommended and future projects will be coming your way." Mr Andy Ward, Cambridge

141 Milton Road Cambridge CB4 1XE
01223 755 802 www.ArtofFlooring.co.uk

Traditional Restorations

Quality Restorer for All Types of Furniture

Repairs, French Polishing & Modern Lacquer Finishes
Re-Upholstery (Quality fabrics at Trade Prices)

Jon Porter

Providing a Friendly Local Service for almost 20 years
Free Advice and Quotations Provided

Tel. 01223 835515 Mob. 07932 611184
email - traditionaljon@live.co.uk

CODEWORDS

Each number 1-26 represents a different letter of the alphabet. Can You work out which is which ? Use your word skills and the clues included. Note that Codewords can include names or well-known phrases. Answers on page 7 in this magazine.

17	15	20	18	6		21	17	25	6	17	17	19	A B C D E F G H I J K L M N O P Q R S T U V W X Y Z	1 14 2 15 3 16 4 17 5 18 6 19 7 20 8 21 9 22 10 23 11 24 12 25 13 26
4		25		25		3		15		12		17		
18	26	15	21	8	26	10		23	18	18	15	21		
26		21		17		2		14		2		26		
21	9	25	16	11		25	12	25	22	26	10	4		
12				7		24				1		10		
	5	7	26	15	2		9	14	17	17	8			
25		10				13		17				9		
1	17	14	26	9	15	17		15	15	25	12	25		
25		25		18		16		23		16		16		
2	25	23	17	16		21	8	26	23	18	15	17		
25		23		25		17		10		12		21		
16	18	3	25	15	2	3		4	15	25	21	21		

WORDSEARCH – Watching the Winter Olympics ?

Can you find all these words in the grid ? They can read left to right, right to left, Up or Down or Diagonally. Tick them off as you go.

G	N	I	I	K	S	K	I	P	O	L	E	Y	ALPINE	GOLD	SKATING
R	I	A	G	I	B	K	C	Y	H	A	L	F	AUS	HALF	SKELTON
U	F	A	L	P	I	N	E	B	O	A	R	D	BIGAIR	HOCKEY	SKIING
N	R	V	U	C	L	K	O	L	T	E	O	A	BOARD	ICE	SKIPOLE
H	E	S	G	R	C	L	W	I	E	H	B	N	BOBSLEIGH	ITALY	SLALOM
R	G	C	E	O	O	O	I	S	R	T	G	C	BRONZE	LUGE	SLOPE
E	R	I	H	S	N	G	T	H	E	X	O	E	CROSS	NORDIC	SNOW
T	E	P	E	S	K	Y	N	A	N	D	L	N	CURLING	OLYMPICS	SOLO
N	P	M	W	L	L	A	M	I	E	W	D	O	DANCE	PAIR	SPEED
I	U	Y	S	E	S	S	T	E	L	P	O	R	DOWNHILL	PIPE	SUPERG
W	S	L	O	P	E	B	P	I	A	R	A	D	FIN	RACE	SWE
A	M	O	L	A	L	S	O	I	N	C	U	I	FREESTYLE	RUN	TEAMS
P	I	P	E	Z	N	O	R	B	E	G	S	C	GER	SILVER	WINTER

GIRTON GOLF CLUB



**MEMBERSHIP FROM
£450.00 UNTIL
MARCH 31ST**

- 5-7 DAY FULL
- FLEXIBLE
- INTERMEDIATE
- JUNIOR
- SOCIAL

JOIN NOW

- DRIVING RANGE
- PUTTING GREEN/CHIPPING AREA
- SWING STUDIO
- PGA PROFESSIONAL COACHING
- GROUP/INDIVIDUAL LESSONS

FUNCTION FACILITIES

- WEDDINGS
- BIRTHDAYS
- BBQ
- FUNERAL RECEPTIONS
- BUSINESS MEETINGS
- QUIZ NIGHTS
- SUNDAY ROAST
- ANNIVERSARIES
- PRESENTATIONS

GOLF RECEPTION 01223 276169
OFFICE@GIRTONGOLF.CO.UK WWW.GIRTONGOLF.CO.UK
DODFORD LANE, GIRTON, CAMBRIDGE, CB3 0QE

SUPPORTING
blue smile
happier children | brighter futures



CLUB 55 GIRTON

*“The only way to have a friend is to be one” * - come and share time with friends at our next events:*

Our Club 55 events have been very well attended so much so that, unfortunately, we had to turn people away from the recent meal held at Abbeyfield. It does, however, indicate how popular these meals are and our thanks again must go to the wonderful chef Dave, and to Trudy who helps co-ordinate the events. In April, Club 55 will be holding another meal at The Golf Club, and I anticipate we will not need to turn people away from there, as the venue is larger. We have not visited the Golf Club for over a year whilst new hospitality management and chef were being appointed, so we are really looking forward to this return.



On 9 February, Chris Cowood led another card making session, showing us how easily we can make a personalised card to be proud of. Her next session will be on 16 March, at the same time and venue as the Computer Support Group in Abbeyfield restaurant 10.00 -12.00.

Tuesday 24 March is our next film afternoon at the William Collyn Community Centre (WCCC). The film is a romantic comedy starring Meg Ryan and Kevin Kilne. It is called French Kiss and is set mainly in France. The story line is that straight-faced Kate (Meg Ryan), sets off on a journey to France, she hates flying and by chance encounters a petty thief Luc (Kevin Kline...who maintains his French accent superbly throughout). She immediately dislikes him, but circumstances mean their paths intertwine – and I won't spoil it anymore for you! It is light-hearted and fun. Doors open at 1pm and the film will show at 1.30pm, refreshments are available beforehand. Please do not arrive before 1pm as we need time to set up safely following the previous booking. £5 covers the cost of the hall hire and licence fee and is payable on the day directly to WCCC, but please let me know if you are coming so we ensure we have set out enough chairs and refreshments.

Wednesday 22 April is the aforementioned meal at the Girton Golf Club. Service will start at 12.30. Orders must be made through me, by 16 April, but payment to be made directly to the Golf Club on the day. A two-course meal will cost £21, with after dinner coffee /tea included. The proposed menu choice is as follows:

Main

Roast Chicken Supreme with new potatoes, seasonal vegetables, and creamy white wine sauce.
Baked Salmon Fillet with new potatoes, buttered greens, and dill sauce.
Vegetable Lasagna served with sourdough bread.

Dessert

Warm Chocolate Brownie with ice cream.
Apple Crumble with custard.
Fresh fruit salad.

If you are new to Club 55 events and wish to be added to my email contact list, please email and let me know. Please note that when I send an email, I do not disclose your address to others.

**Title quote is by essayist and poet Ralph Waldo Emerson 1803 -1882*

patdickensclub55@gmail.com 01223 971596



Tuesday Connections

I am very grateful to Antoinette for “holding the fort” on 10 February. Thank you, Antoinette.

On Tuesday 10 March, Lisa Nixon from Silver Swans will be returning to talk about the value and benefit of music and moving to it.

Patricia Johnston Older Residents' Coordinator
07669 660 866
patricia.johnston@ageukcap.org.uk

supported by
Girton
TownCharity

The Cotton Hall

The Cotton Hall exists for the benefit of the people of Girton, and the Trustees have recently updated our charitable objectives to bring them up to date with the way we operate. Details are available on the website: www.cottonhall.co.uk if you want to know more. Please contact Michael, Chair of Trustees, if you have any questions on 01223 202145.



The Friends of the Rosie

We wish all the new mums an enjoyable Mothering Sunday, and a Happy and Healthy 2026.

With your help we raised £1,270 in 2025 to help make the Rosie a more comfortable environment for mothers and babies. You can find out how we spend your donations at our Annual General Meeting on 2 March 2026.

Are you looking for gifts for St David’s Day, Mothering Sunday or St Patrick’s Day? We are sharing our extensive catalogue on our RosieInStitches Facebook page so you can grab yourself locally sourced, unique, beautifully crafted gifts and warm clothing and accessories for special friends and family.

You can shop for new items at www.rosieinstitches.org.uk or donated items in our rosieinstitches2010 eBay charity store, and vintage knitting patterns on our Facebook page. Please take a look at our extensive selection of jumpers and cardigans ideal to keep babies and children up to 4 years old toasty and warm through the winter using coupon sleeves50. If you don’t find what you are looking for we do accept commissions.

For all your other online shopping, please remember to use easyfundraising every time you shop. Over 8,000 retailers will donate to The Friends of the Rosie Hospital, including all the big names like eBay, John Lewis & Partners, Argos, ASOS, Expedia, M&S, Just Eat, Uswitch and many more! This means you can raise free donations for The Friends of the Rosie Hospital no matter what you’re buying.

If you haven’t signed up to support us yet, it’s easy and completely free. Some stores are now donating when you shop in store in person, follow the instructions on the app. These donations really help us, so it would be great if you could take a moment to get started!

You can find our easyfundraising page at <https://www.easyfundraising.org.uk/causes/forh> New members are always welcome, whether to contribute financially, to join our team of crafters, join our committee, provide transport for our volunteers or display a small selection of our wares. If you would like to donate some of your spare time check out our website's volunteering page for some ideas.

Avril Williams
07493692010
avril@rosieinstitches.org.uk
and Jo Hall
01954 780304



GIRTON Parish News

How you can support the GPN

We are continuing to offer our readers the chance to make a regular financial contribution to the GPN. This could just be £5 or £10 a year, or more if you felt comfortable doing so.

How can you donate?

1. **Online banking** - the GPN bank details are as follows:

Sort code: 60-04-23

Account number: 54490391

Account name: Girton Parish News

2. **Cheque** - these can be posted to our Treasurer Marion Fisher at 117 High Street, Girton, CB3 0QQ.

3. **Get in touch** – if you need help donating then contact our Secretary Sheila Bowler on 01223 276914.

The GPN provides a unique insight into what goes on in our precious village and we are hopeful that with your valued support we can continue to document life in Girton for years to come.

Rob Neal, Editor

TURTLE DOVE
CAMBRIDGE

POP-UP CAFE

Every Friday 9am-5pm
Cotton Hall, Girton

FRESH HOMEMADE SANDWICHES, PASTRIES & BAKED TREATS, CAKES,
HOT & COLD DRINKS, VEGETARIAN & GLUTEN-FREE OPTIONS

AVAILABLE

A CAFE WITH A PURPOSE

EVERY PURCHASE MADE HELPS SUPPORT YOUNG WOMEN IN CAMBRIDGE INTO THE WORKPLACE THROUGH MEANINGFUL TRAINING AND WORK EXPERIENCE - HELPING THEM GROW IN CONFIDENCE, GAIN SKILLS AND CONNECT WITH THE COMMUNITY.

Pop in for coffee,
cake and a good cause!

www.turtledovecambridge.com



Listening Lantern

On Our Doorstep

Girton - our home, our village, our community.

Great efforts are being made to encourage and include the voice of Girton residents in shaping

the way ahead - from the facilities and events to cycle-lanes and parking. When we want something to change or there is a problem/issue, we can be quick to contribute. But how often are we appreciative of what is already on our doorstep? Reflecting on this, here I share some of what I have noticed and am grateful for on our Girton doorstep:

The events: Sunday Girton College Music Society concerts, The Feast, The Cogwheel Canter.

The green spaces: the Recreation Ground, the Sensory Garden, the Alice Hibbert-Ware Garden.

The meeting places: the Co-Op, Cotton Hall, William Collyn Centre, Crown/ George, St Vincent's Community Centre.



Signposting

Andy's Man Club aims to end the stigma surrounding men's mental health and help men through the power of conversation. They provide a safe space where men can feel comfortable to talk and open up about their experiences in a room free of judgment.

The Cambridge group meet at Coleridge Community College (side entrance from car park), on Monday evenings 7pm-9pm. There is parking available and the building is wheelchair accessible. It's free to attend Andy's Man Club, you don't need a referral, and you don't need to book ahead, just go along! The group is facilitated by supportive volunteers who will make you feel very welcome. Visit: *Andy's Man Club Cambridge* on Facebook to find out more about the group.

There is also an online Andy's Man Club group that runs on Mondays 7pm-9pm. Email: info@andysmanclub.co.uk for more information.

The Listening Lantern Food Hut

Please visit 24/7 and take what you need, no questions asked, at:

What3words location: bits.yours.drama
Postcode location: CB30PB [St Vincent's Close]
Directions: Make your way down Pepys Way, past the Girton GP Surgery. Turn left down St Vincent's Close. Follow along to the third set of terraced houses. You will see the Food Hut by the pavement side.

Juliet Adloun, a longstanding Girton resident, is a fully qualified and accredited Adult/ Youth Mental Health First Aid Instructor and Suicide First Aid Associate Tutor experienced in delivering the full suite of MHFA and SFA courses and committed to supporting mental health within her local community. Contact her via: www.facebook.com/listeninglantern.julietadloun or mhfa.julietadloun@gmail.com

Girton Walking Group

Saturday 7 February



All walkers climbed the 'hill' with ease and, in spite of the damp in the air, saw the promised views. The weather gradually warmed up until at the end it was positively balmy and we all had a leisurely walk back through Cotton Nature Reserve.

Saturday 7 March

T'other side of Cambridge

For this walk we meet at the junction where Cherry Hinton Road meets Queen Edith Way. For parking, cross the traffic lights from Cherry Hinton Road ahead into Fulbourn Road. Immediately on your right and facing the Robin Hood Pub (CB1 9JL) there is a large lay-by for parking, not in the pub car park please. We begin at 10am to walk 4 miles of parkland, riverside and a special site which may be new to you. Do bring a drink etc for a break in lovely surroundings.

Saturday 4 April

A walk from Bar Hill taking in local villages.

If you need a lift or would like to join our mailing list for future walks or if you no longer wish to receive members emails, please contact me at ann.jerram@gmail.com. Note that all walks are at your own risk.

Waiting Well: Lent in the Cold Ground

As I write at the beginning of February, the garden is just starting to come out of the “stubbornly quiet” phase. The soil is cold, the days still short, and yet beneath the surface something patient is happening. Bulbs have sat in the dark earth doing, apparently, nothing at all. And yet we know—because experience tells us—that this waiting is not wasted. It is part of how growth happens.

Lent is the Church’s season of waiting like that. Forty days that invite us to slow down, to hold back, to sit with a little discomfort rather than rushing to fill every gap. In a culture that prizes speed, choice and self-sufficiency, Lent feels oddly out of step. Why practise restraint when we could indulge? Why admit dependence when we are told we should manage on our own?

One answer is that restraint teaches us truth. When we deliberately give something up—food, drink, distractions—we learn what sustains us and what merely props us up. We notice our habits, our irritations, our longings. Like bulbs in winter, we discover that life is still at work even when we stop pushing for visible results.

Lent also reminds us that we are not meant to grow alone. To limit ourselves is to make space for others and for God. When I fast, however lightly, I am reminded that I rely on food I did not grow, on people I did not choose, on a world I did not make. Dependence is not a failure; it is the basic condition of being human. Christian tradition is full of stories that underline this. An example comes from the life of Mother Teresa. When she first felt called to serve the poorest of the poor in Calcutta, she did not step immediately into a fully formed mission with buildings, staff, and support. She began with almost nothing: no clear plan, very little money, and a deep sense of uncertainty.

For a long time, she had to wait — not just for resources, but for the slow unfolding of what the work would become. She depended on others in a way that must have been humbling, on strangers who offered food, on local families who opened doors, on the Church’s permission, and ultimately on God’s provision day by day.

She once wrote that her work was not about doing “great things,” but about doing “small things with great love.” That kind of patience is deeply Lenten. It is the acceptance that we cannot force fruitfulness on our own timetable. We plant, we show up, we trust — and we wait. Even her famous ministry grew, like a bulb underground, through hidden years of obscurity and dependence before it ever became visible.

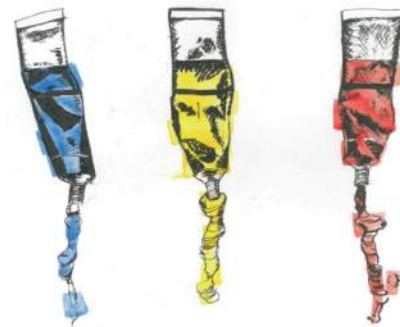
That balance—restraint without pride, dependence without despair—is at the heart of Lent. We do not give

things up to prove how strong we are, but to remember that strength comes from elsewhere. As St Paul wrote, “When I am weak, then I am strong.”

Out in the garden, the bulbs are still hidden. They depend on rain, frost, and time—none of which they control. And yet, come spring, they will rise, not by effort but by following to the pattern given to them.

Lent asks us to trust that pattern too. To wait. To hold back. To lean on God and one another. And to believe that, beneath the cold ground of restraint, something quietly hopeful is already growing.

Girton Art Exhibition 2026



St Andrew’s Church, Girton
Friday 8th May 10 am to 7 pm
Saturday 9th May 10 am to 5 pm
• Free entry • Refreshments •
Exhibitor deadline: 13th March 2026
Email girtonartshow@gmail.com
Or call Clare at 07787 510886



ST ANDREW'S
GIRTON

WE'RE RECRUITING!

**Paid Flexible Part-Time
Parish Administrator**

8 hours / week

Details and job
description at:

www.girton.church/jobs





St Andrew's Church

Rector: Revd Michael Bigg (*rector@girton.church*)
Tel: 01223 202145; Website: *www.girton.church*

Associate Priests:

Revd Christine Barrow (*mcbarrow@me.com*)

Revd Marie Lucchetta-Redmond

(*marie@girton.church*)

Curate: Revd Kevin Parks (*curate@girton.church*)

Licensed Lay Ministers: (*llm@girton.church*)

Children and Families Minister: Dr Eona Bell

Tel: 07305 201419; (*cfm@girton.church*)

Anna Chaplains: (*anna@girton.church*)

Churchwarden: (*wardens@girton.church*)

Sunday Services: March 2026

1st Mar 10:00am - Holy Communion (+ activities for children)

7:00pm - Contemplative/Reflective Service

8th 8:00am - Holy Communion (BCP)

10:00am - All-age Communion

6:00pm - Evening Prayer (BCP)

15th Mothering Sunday

10:00am - Holy Communion (+ activities for children)

6:00pm - Evening Prayer (BCP)

22nd 8:00am - Holy Communion (BCP)

10:00am - Morning Prayer

5:30 pm - St Andrew's Youth Group

29th Palm Sunday

10:00am - Holy Communion (+ activities for children)

5th Apr Easter Day

6:30am - Easter Dawn Vigil

10:00am - Holy Communion (+ activities for children)

7:00pm - Contemplative/Reflective Service

Services during Holy Week

2nd Apr 7:00pm - Maundy Thursday service

3rd Apr 11:00am - Good Friday service

Regular weekday Services: March

Tues 9am - Morning Prayer (said)

Weds 9am - Morning Prayer (said) (Online)

Thurs 9am - Morning Prayer (said) (Online)

Other Services

11th 2:00pm - Abbeyfield, Ecumenical Holy Communion

17th 2:45pm - Arlington Manor, Ecumenical Holy Communion

26th 11:00am - Gretton Court Holy Communion (BCP)

The period of Lent continues until Easter. We celebrate Mothering Sunday on 15 March. And Holy Week, the week from Palm Sunday to Easter Day with other services listed above. Please join us whenever you are able. We continue our "Question a Christian," meetings each Wednesday during Lent from 7:30pm in The George pub. We might not have all the answers, but it's always good to talk! For up-to-date information about all these events please see the church website. You are welcome to join us for Sunday morning worship in person or remotely at: <http://bit.ly/GirtonParishLive>. Please check the church website for information (*www.girton.church*).

Prayer

Lord, in these days of mercy, make us quiet and prayerful; in these days of challenge, make us stronger in you; in these days of emptiness, take possession of us; in these days of waiting, open our hearts to the mystery of your cross. [*Angela Ashwin*]

Girton Baptist Church



Minister: Revd Nick Lowe

Church Tel: 07483 334860

Church Secretary: Mrs Virginia Rootham-Smith

Tel: 01223 520442

Website: *www.girtonbaptistchurch.org.uk*

March Services at Girton Baptist Church

1st Morning Service with Communion, at 10.30am

8th Morning Service, at 10.30am

15th Morning Service with Communion, at 10.30am

22nd Open Service, at 10.30am

29th Morning Service, Palm Sunday, at 10.30am

Other Events

Coffee Morning: Would you like a chat and coffee on a Thursday morning? Why not try our friendly coffee morning at Girton Baptist Church from 10am?

Tuesday Afternoon Friendship Group: This month's TAF is on Tuesday 3 March, beginning at 2:15pm, will be an Easter celebration. Nick Lowe will give a talk called, "A Garden in Jerusalem."

We warmly invite you to join our Bible study. Whether you're curious about the Bible or wish to delve deeper into the Christian faith, please don't hesitate to contact us. We would be delighted to share more information with you.

All are welcome to the services and events that we provide.

For further details about any of the above, including the online Zoom link for any of the services, please ring 07483 334860 or email: *secretary@girtonbaptistchurch.org.uk* or *pastor@girtonbaptistchurch.org.uk*

A Short Devotion

March is the time for sowing seeds, which reminds me of Jesus' Parable of the Sower in Matthew chapter 13. In it, a farmer scatters seed liberally on all kinds of ground: hard soil, rocky soil, soil full of weeds, and good soil. Only seed that lands in good soil produces a harvest—"a hundred, sixty or thirty times what was sown." I once asked a gardener the secret of his excellent runner beans, and he replied without hesitation, "you need good soil."

The parable isn't really a lesson in horticulture but is a picture of how God works. The seed is the Word—good, life-giving, full of potential—and the parable gently turns the question back to us: what kind of soil are we? Are we too rushed for anything to take root? Are we crowded with worries? Or are we willing to make space for something new to grow?

Whether or not we think of ourselves as religious, spring invites us to consider what we're cultivating in our lives. Small seeds can often do far more than we expect when the soil is tended with care.

If you would like to discuss any Parish Council issues, please contact the following:

Chair

Stuart Marshall, stuart.marshall@girton-pc.gov.uk

Vice-Chair

Daniel Carney, daniel.carney@girton-pc.gov.uk

Councillors

Archie Bajpai, archie.bajpai@girton-pc.gov.uk
 Victoria Brown, victoria.brown@girton-pc.gov.uk
 George Crawley, george.crawley@girton-pc.gov.uk
 Martin Dickson, martin.dickson@girton-pc.gov.uk
 Nas Hayat, nas.hayat@girton-pc.gov.uk
 Patrick Linton, patrick.linton@girton-pc.gov.uk
 Ann Muston, ann.muston@girton-pc.gov.uk
 Richard Reeves, richard.reeves@girton-pc.gov.uk
 Walter Richards, walter.richards@girton-pc.gov.uk
 Con Tasioulas, con.tasioulas@girton-pc.gov.uk

Formal correspondence to the Council should be addressed to the Parish Clerk.

District Councillors

Corinne Garvie, Tel: 07780 932267
cldr.garvie@scambs.gov.uk
 Richard Stobart, Tel 07950 934793
cldr.stobart@scambs.gov.uk

County Councillor

Edna Murphy, Tel: 01223 577005
edna.murphy@cambridgeshire.gov.uk

Parish Clerk and Finance Officer

Yvonne Murray Tel: 01223 618619
clerk@girton-pc.gov.uk

Facilities Manager

Angie Vidler, Tel: 01223 618619
admin@girton-pc.gov.uk

Website: www.girton-cambs.org.uk/council.html

Postal address

Girton Parish Council
 The Pavilion, Girton Recreation Ground
 Cambridge Road
 Girton
 Cambridge
 CB3 0FH

You can also use these QR codes to contact us:



Bin collections March

Thursday	5 March	Blue and Green bins
Thursday	12 March	Black bin
Thursday	19 March	Blue and Green bins
Thursday	26 March	Black bin

Mobile library

Thursday 26 March

Thornton Court	9.40-10.00am
Abbeyfield	10.10-10.50am
Cotton Hall/Church	11.00-11.30am
Orchard Close	11.35-11.55am
St. Vincent's Close	12.00-12.40pm
Gretton Court	12.50 - 1.15pm
Churchfield Court	1.20 - 1.45pm

Contact numbers for bookings

Cotton Hall	07759 983420
Orchard Close	277164
Pavilion	618619
St Vincent's Close	276447
William Collyn Centre	279587



PODMORE
GARDENING &
HANDYMAN SERVICES

EST 2025

Reliable help for every
hedge and hallway
One name for every job
— indoors and out
Gardens trimmed
Homes maintained

Podmore delivers

CONTACT: NIK 07793 037556 OR
NIK@PODMORESERVICES.CO.UK

• PAINT • DECORATE • DESIGN •

Full decorating and Painting service
Wallpaper removal
Design ideas and advice
Free estimates

Joanne Harmer
Telephone: 01223 277012
Mobile: 07787 068987
joanne.m.harmer@gmail.com

MOTUS PHYSIOTHERAPY
SIMPLE AND EFFECTIVE

Chartered Physiotherapists | In Girton | Ample Free
Parking | Home visits | Accept Private Medical Insurance
and Self Funders

Online consultations via telephone, Skype or Face Time
available

01223 949405

W: www.motusphysiotherapy.co.uk
E: info@motusphysiotherapy.co.uk

Vision Fitness, Oakington Road, Girton, CB3 0QH

LEARN HOW
TO WEAR
COLOUR
CONFIDENTLY.

HOUSE OF COLOUR

HOUSE of COLOUR

Discover your best colours and your unique style!
Colour Analysis and Style Consultations available in Girton

WWW.HOUSEOFCOLOUR.CO.UK/STYLISTS/SARAH-GEORGE-LEE
07790 635815

Girton Framers

Local bespoke picture framing service

www.girtonframers.co.uk
✉ contact@girtonframers.co.uk
☎ 01223 635249

**A COMPLETE
PLASTERING SERVICE**

Reliable, Local Plastering Service

Over 30 Years' Experience - Internal & External Work

- ✓ Re-skimming to refresh ceilings & walls
- ✓ All plasterboard work (ceilings & walls)
- ✓ Small repairs welcome
- ✓ Rendering & stone dashing
- ✓ Trusted locally – happy customers

Girton • Cambridge • Surrounding villages

Free quotes & friendly advice

Louie Holliday

07980 475856 | louieholliday@icloud.com
10 High Street
Girton
Cambridge

Belly rubs come as standard.



We know certain things make home feel like home.

So if you've got a four-legged friend you'd like to bring along, we'll do everything we can to make them feel welcome too.



Every moment.



HALLMARK
LUXURY CARE HOMES

Residential, nursing and dementia care.

Learn about life with us at

hallmarkcarehomes.co.uk | 01223 080 138 | Hallmark Arlington Manor, Girton, CB3 0FW